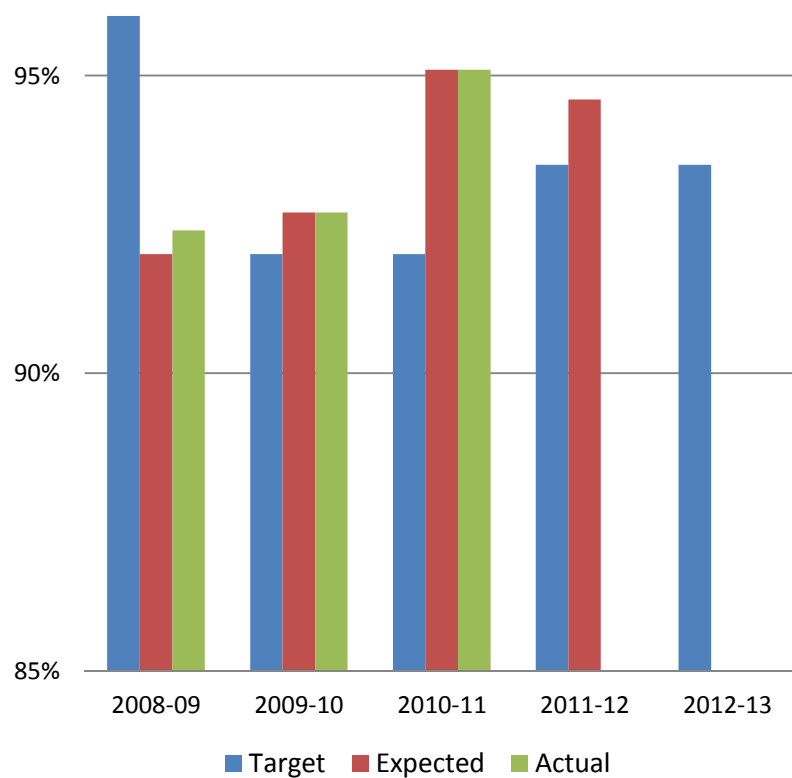


Kindergarten participation rates

- Budget Paper 3: Service delivery, 2008-09 to 2012-13



	2008-09	2009-10	2010-11	2011-12	2012-13
Target	96.0	92.0	92.0	93.5	93.5
Expected	92.0	92.7	95.1	94.6	**
Actual	92.4	92.7	95.1	**	**

** Rates not yet available

