

Inquiry into impact of the COVID-19 pandemic on the tourism and events sectors

Department of Health

28 June 2021

Witnesses

Professor Euan Wallace

Secretary, Department of Health

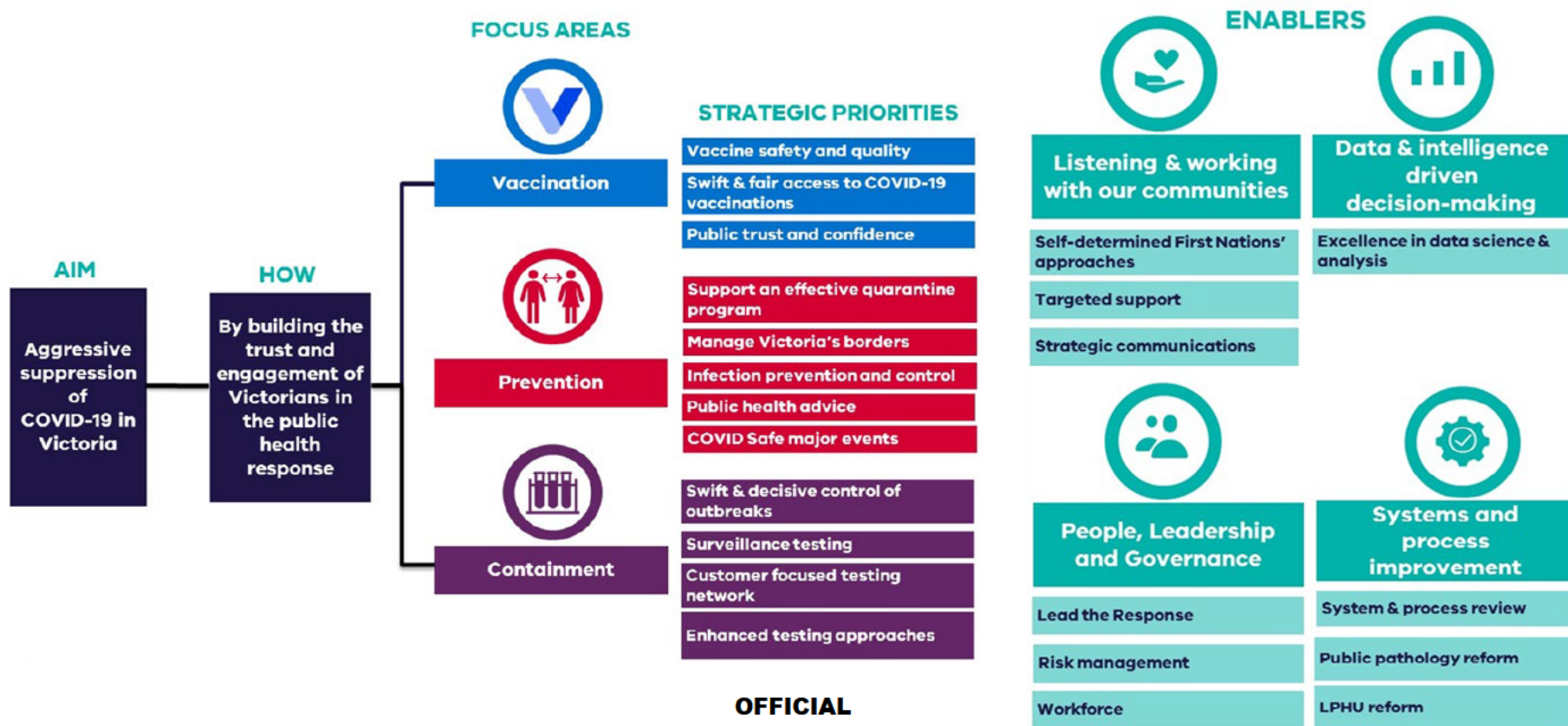
Adj Clin Prof Brett Sutton

Chief Health Officer, Department of Health

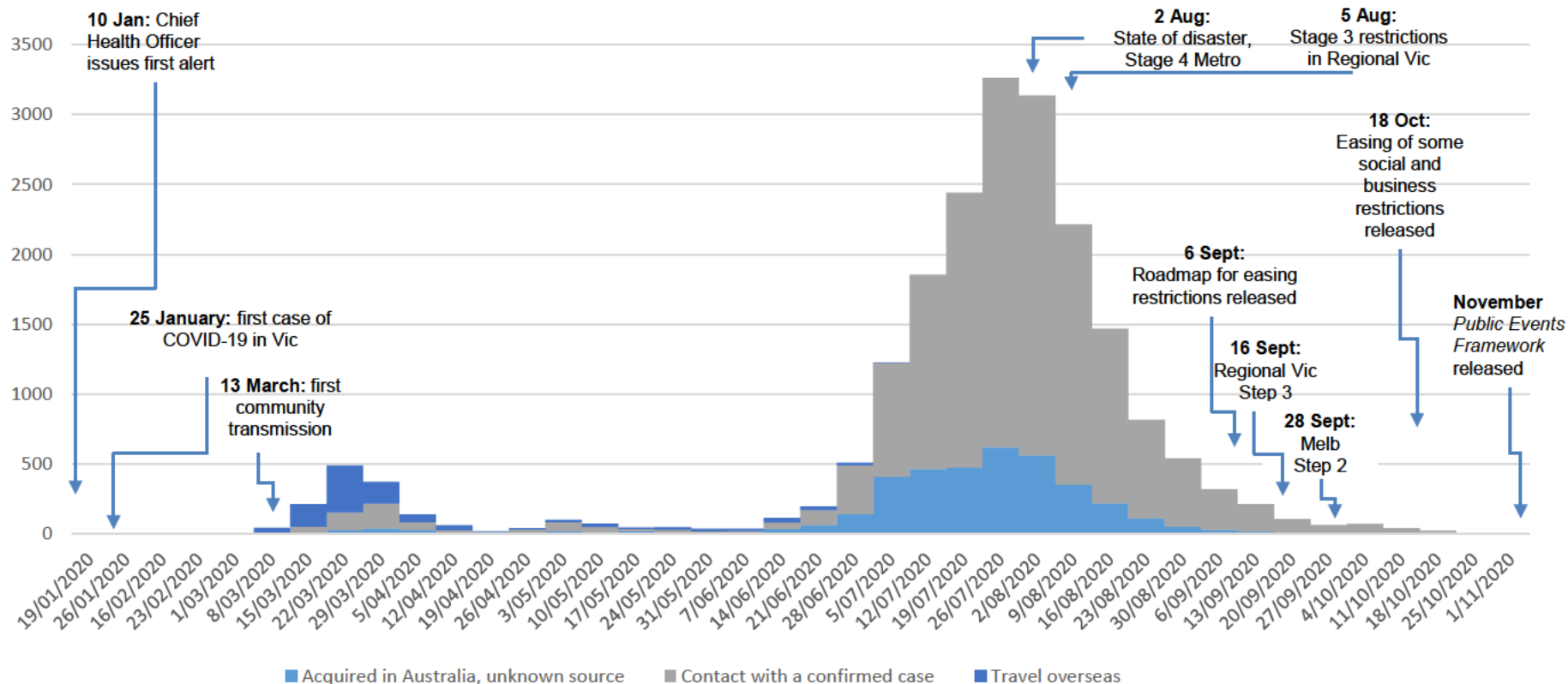
Nicole Brady

Deputy Secretary, Public Health Policy and Strategy, Department of Health

An integrated approach to COVID management

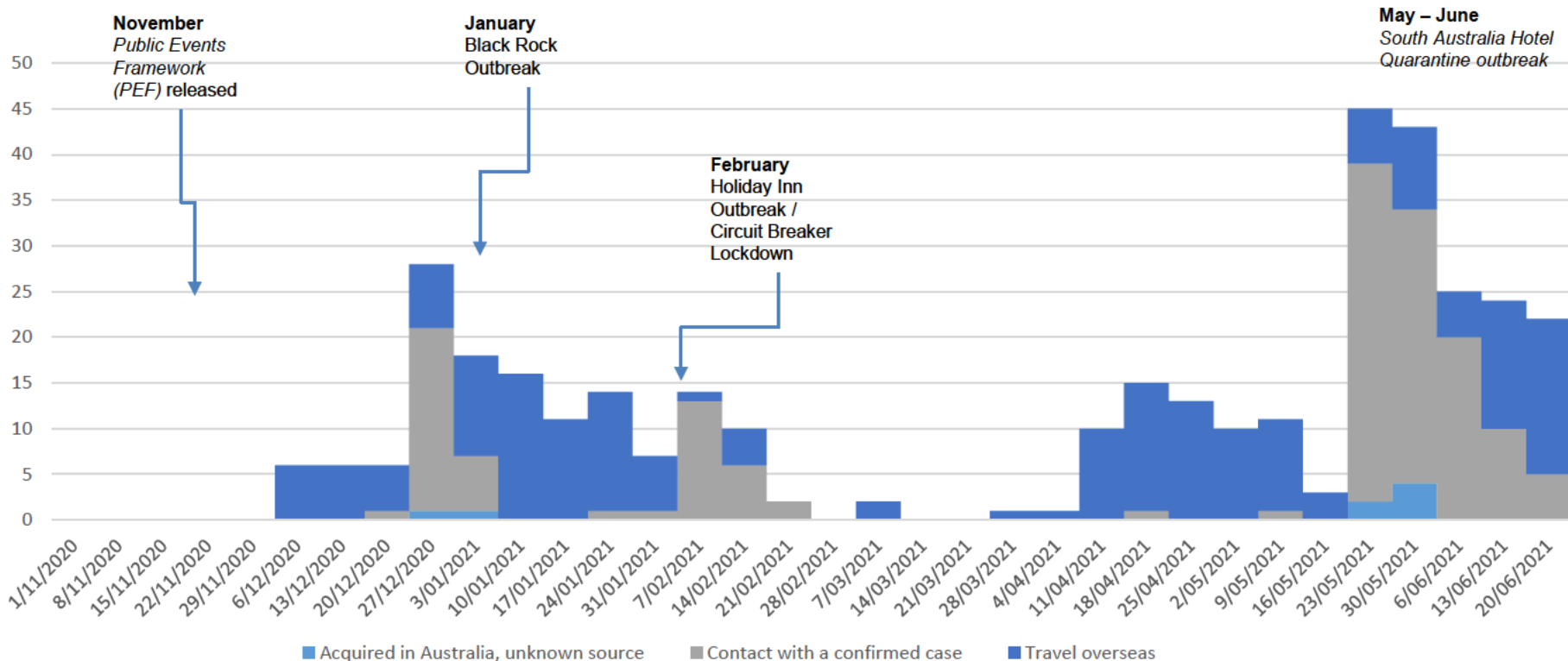


COVID-19 in Victoria – Jan 2020 to Nov 2020



OFFICIAL

COVID-19 in Victoria – Nov 2020 to June 2021



■ Acquired in Australia, unknown source ■ Contact with a confirmed case ■ Travel overseas

OFFICIAL

Public Events Framework (PEF)

PEF 1

22 November 2020

- Included three phases
- The Black Rock and Holiday Inn outbreaks prevented transitions between phases.

PEF 2

16 March 2021

- As the public health risks and community epidemiology changed the PEF moved to include a low/high risk split, with Low-Risk Tier 2 events not requiring approval upon completion of an attestation.
- Reduced workload, with a correctly completed attestation being turned around in 24 hours

Revised
PEF

20 April 2021

- The Revised PEF went live on the public events website on 14 May.
- Includes further refinement of approval processes and less matters coming through for Public Health assessment.
- Paused from 27 May, to be resumed from 2 July, depending on epidemiology and public health advice.

Framework Criteria	Revised Public Events Framework (April 2021) COVIDSafe Open Framework Setting
Tier thresholds	Tier 1: > 7,500 attendees. Tier 2: 1,001 to 7,500 attendees. Tier 3: < 1,000 attendees
Venue capacity (seated)	For Tier 1 events and Tier 2 events 75% of the venue's fixed seated capacity (no capacity limit). For Tier 3 events up to 1000 attendees, seated venues are permitted to operate at 100% of the venue's fixed seated capacity. Venues that have a seated capacity of between 1000-1334 attendees are permitted to host a maximum of 1000 seated attendees.
Density quotient	One person to two square metres.
Zoning	Zoning is required for all Tier 1 events (exceeding 7,500 attendees). Each zone has a maximum of 7,500 attendees.
Free-standing & roaming event	Free-standing/roaming events permitted at a density quotient of one person per two square metres. All free-standing/roaming events must be held in a defined area
Record keeping	Electronic record keeping is mandatory for all public events. Mandatory use of the Services Victoria app.
COVID marshals	For Tier 1 and Tier 2 events, a minimum COVID Marshal ratio of 1:200.
Dancefloors	A density quotient of one per two square metres applies.
Camping events	Camping events are permitted and must operate under the current Restricted Activity Directions and the obligations of an accommodation provider.

Vaccine strategy

Our overarching objectives include:

1

Ensuring all Victorians can access COVID-19 vaccinations as quickly as possible, in line with vaccine supply and in accordance with Commonwealth's prioritisation framework

2

Enabling the highest level of vaccine safety and quality

3

Building and sustaining public trust and confidence through a range of broad and targeted communications and engagement activities

4

Establishing an ongoing COVID-19 vaccination program into 2022 and beyond