

# 2018-19 Public Accounts and Estimates Committee Budget Estimates Hearing

The Hon. James Merlino MP  
Minister for Emergency Services

# Emergency Services Portfolio

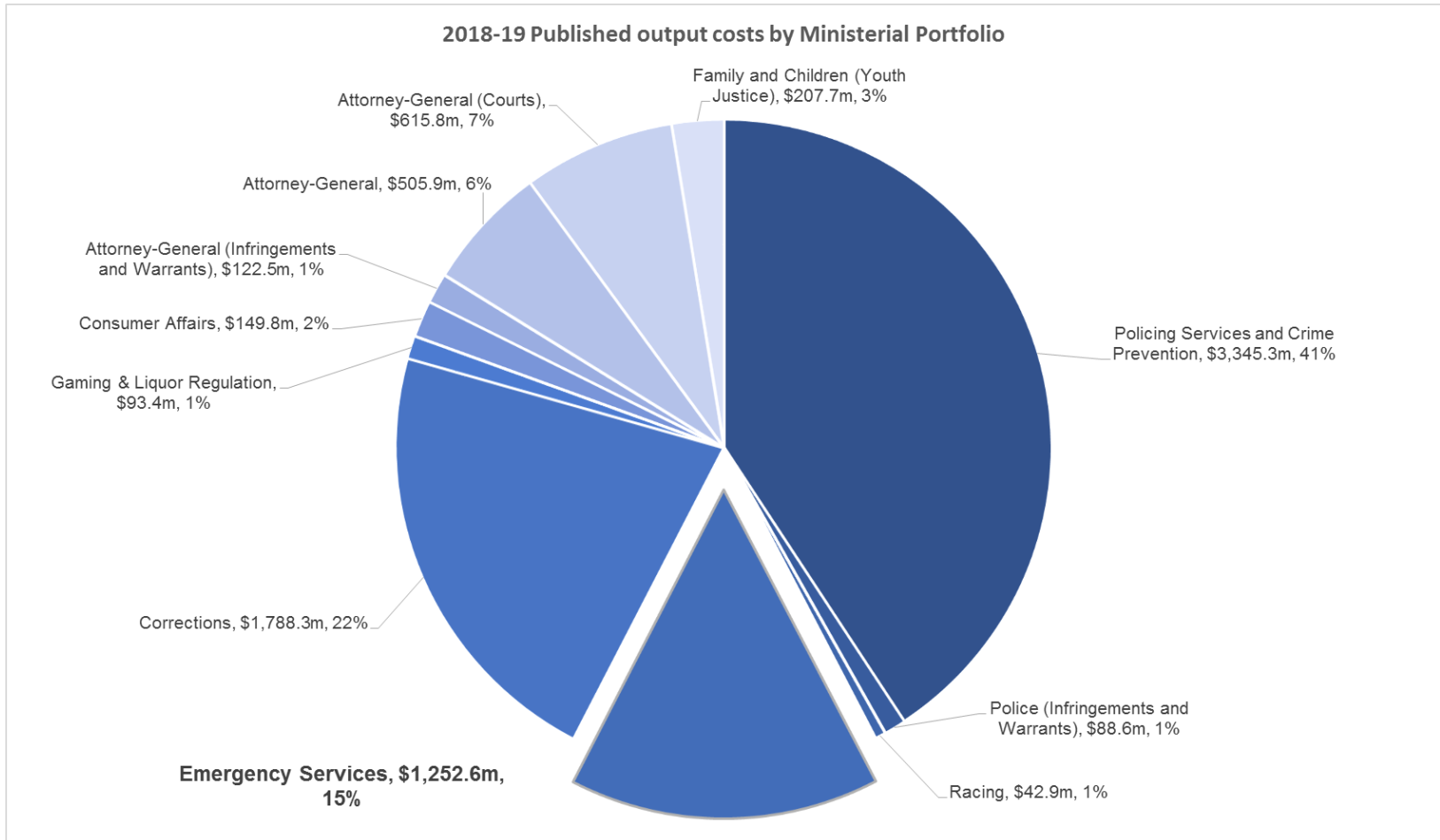
- Country Fire Authority (CFA)
- Emergency Management Victoria (EMV)
- Emergency Services Telecommunications Authority (ESTA)
- Life Saving Victoria (LSV)
- Metropolitan Fire and Emergency Services Board (MFB)
- Victoria State Emergency Service (VicSES)

6,000+ paid  
staff

90,000  
Volunteers

1480+ Stations/  
units and clubs

# Justice Budget Breakdown



# Victoria's Growing and Changing Population

| 1954        | 1996        | 2016        |
|-------------|-------------|-------------|
| 2.4 million | 3.2 million | 6.1 million |

- Increased population growth increases demand on emergency services
- Rapid population growth, and expansion of the urban boundary, challenges fire services model particularly
- For some key growth areas this population growth is particularly significant.

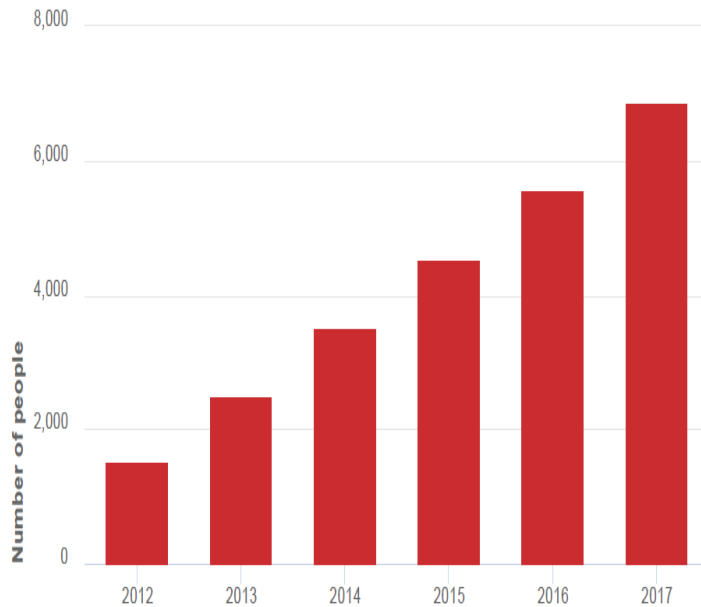




# Geelong/Armstrong Creek Growth

## Estimated Resident Population (ERP)

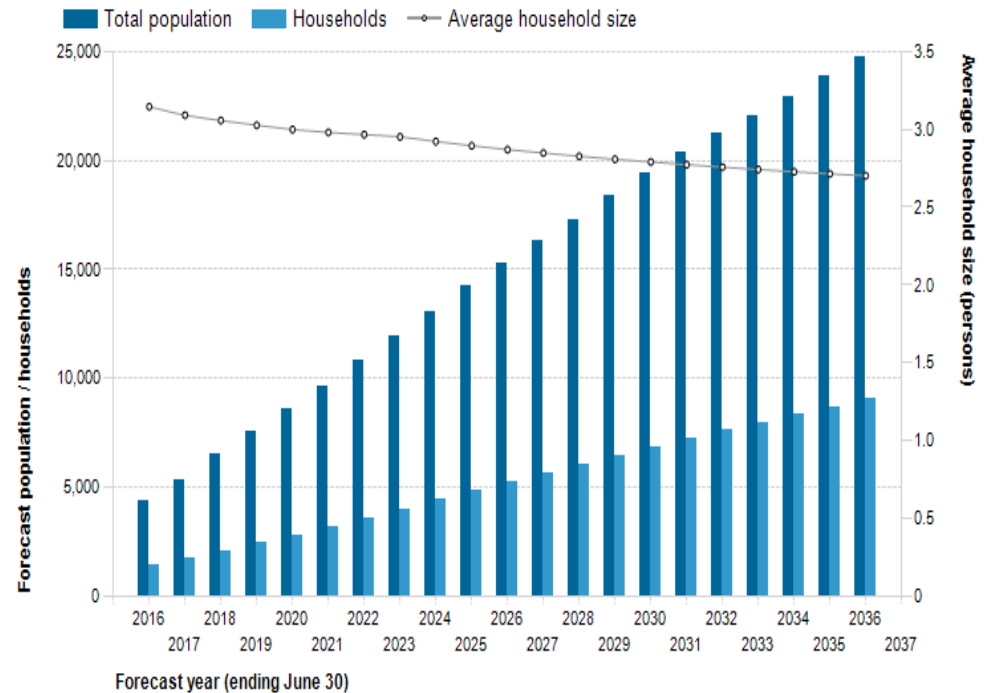
Armstrong Creek - Mount Duneed



Source: Australian Bureau of Statistics, Regional Population Growth, Australia (3218.0). Compiled and presented by .id the population experts

## Forecast population, households and average household size

Armstrong Creek



Population and household forecasts, 2016 to 2036, prepared by .id the population experts, November 2017.

.id the population experts



# La Trobe Valley 1950 - 2018



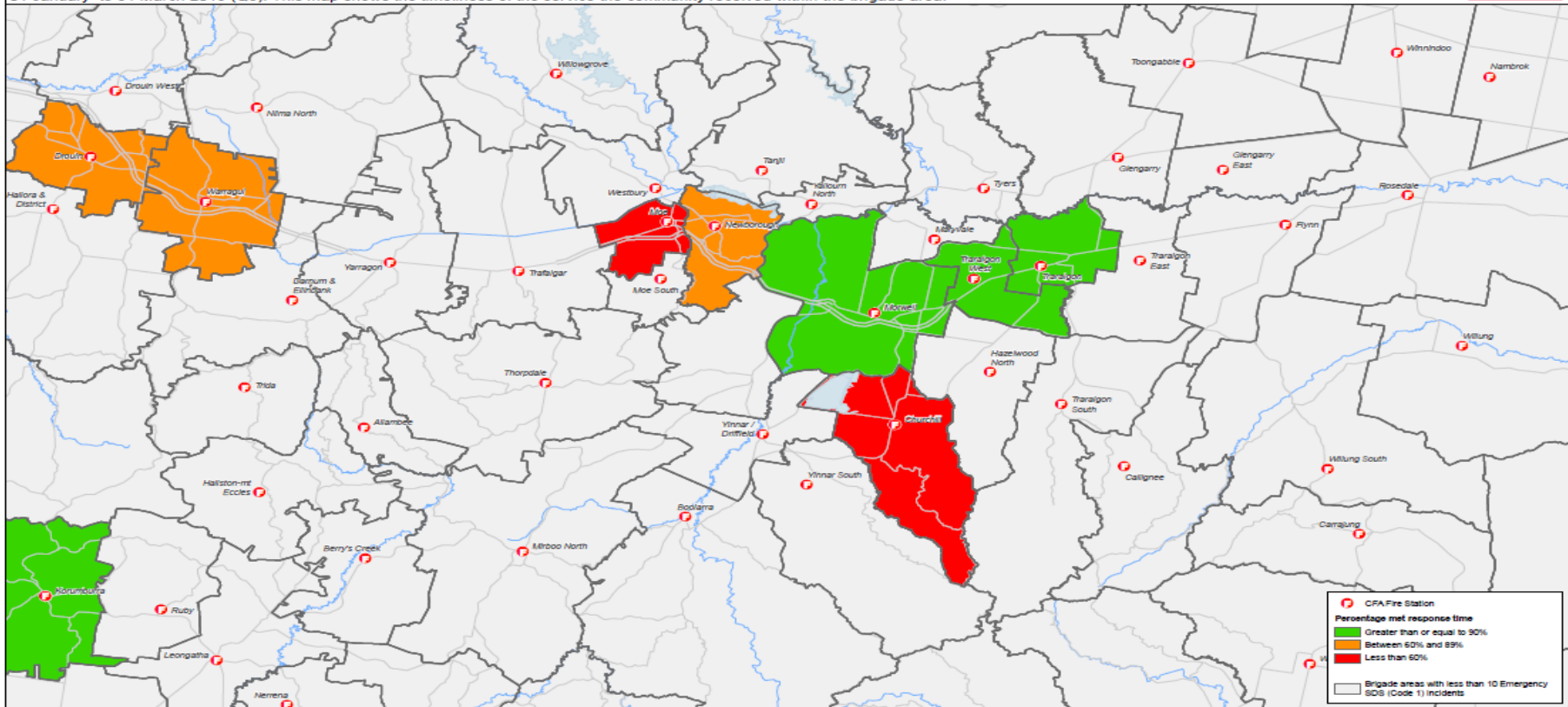


# Latrobe Valley Response Times

## Community Emergency Response Times - Latrobe Regional City

CFA has service delivery standards, which specify a response time target to attend an emergency incident. There are different service delivery standards (response times) across the State, depending on the hazards and risks within a geographic area.

This map shows the percentage of incidents where the community received a response within the applicable service delivery standard in a brigade area across all hazard classes for the period of 01 January to 31 March 2018 (Q3). This map shows the timeliness of the service the community received within the brigade area.



## 2018-19 Budget Highlights

- \$9.1 m for CFA High Priority Projects, including Armstrong Creek
- \$13 m for a new Craigieburn Fire Station
- \$7.8 m for SES High Priority Infrastructure
- \$11.5 m for Life Savings Clubs High Priority Upgrades
- \$10m for Emergency Services Volunteer Grants Program

## 2018-19 Budget Highlights

- \$31.6 m for ESTA to support demand growth
- \$24.3 m over 4 years for State Emergency Communication Centre relocation
- \$11.3 m for Marine Search and Rescue
- \$8.3 m for Water Safety Programs

## 2017-18 overview

- Management of South-West bushfires
- Memorandum of Understanding (MOU) between MAV, VicSES and State of Victoria.
- Aviation night time trials



# All Emergencies, All Communities

1 July 2017 - 30 April 2018

1 July 2016 - 30 April 2017

