

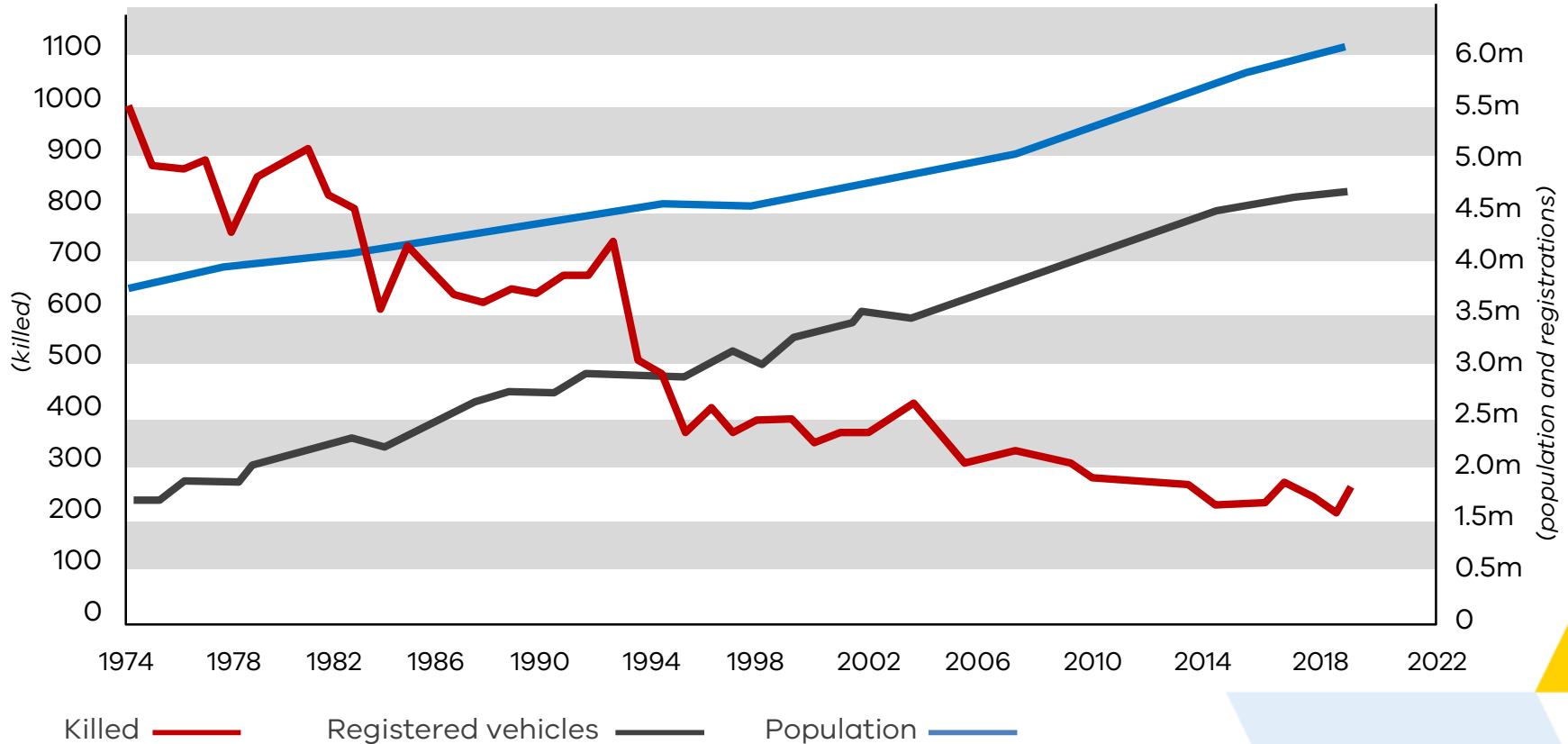
Robyn Seymour

Deputy Secretary – Network Planning  
Head – Road Safety Victoria

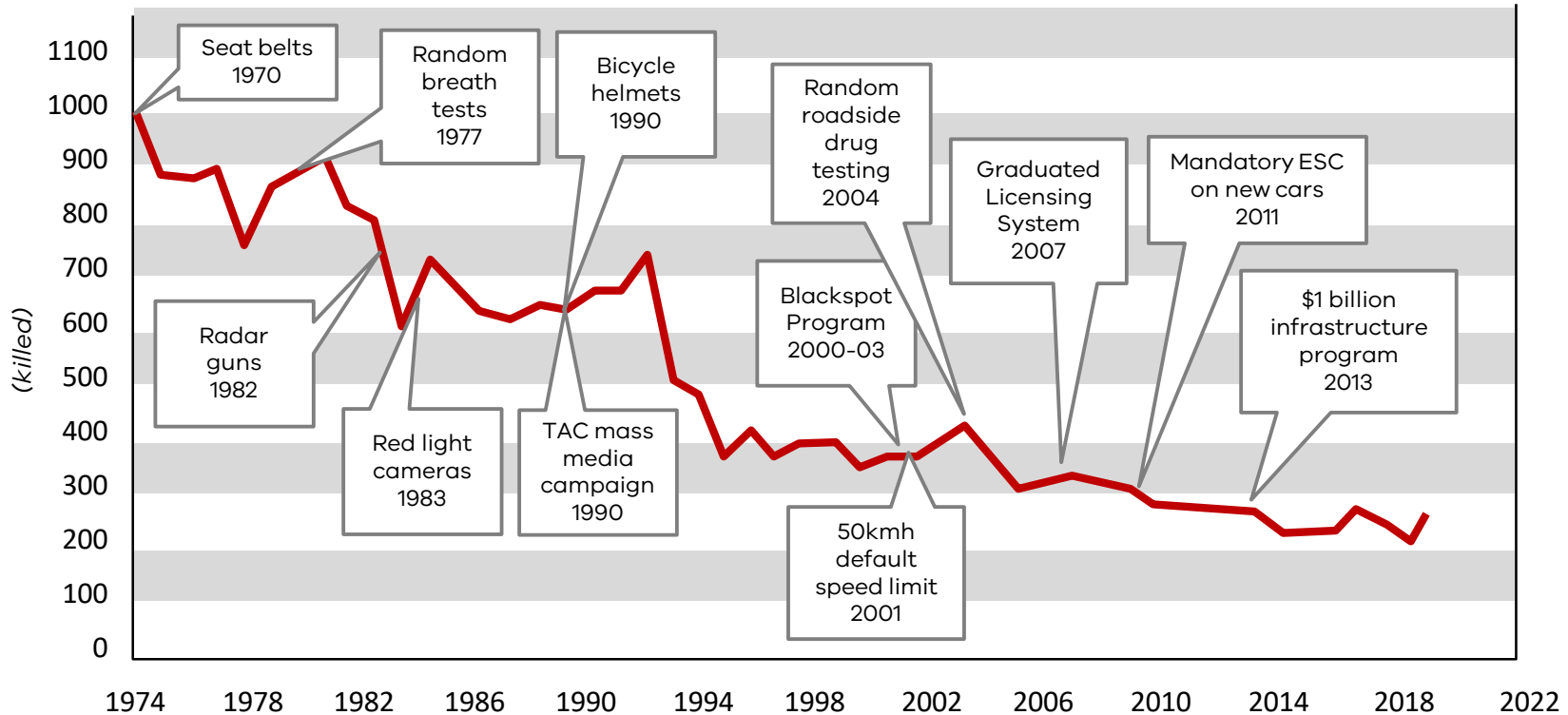
Samantha Cockfield

Head of Road Safety  
Transport Accident Commission

# Victoria's road safety performance



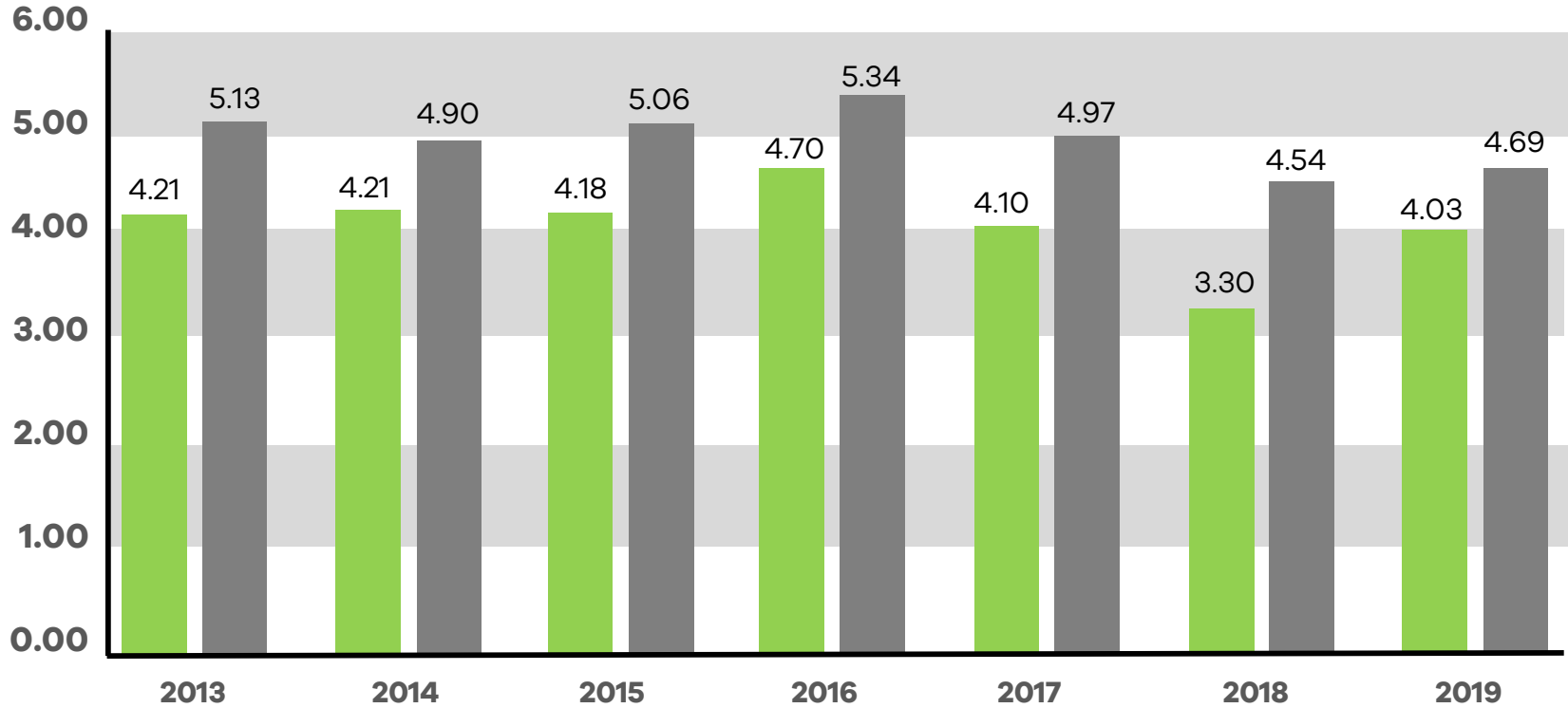
# Victoria's road safety initiatives



Killed —

# A national comparison

Fatality rates per 100,000 population



Victoria

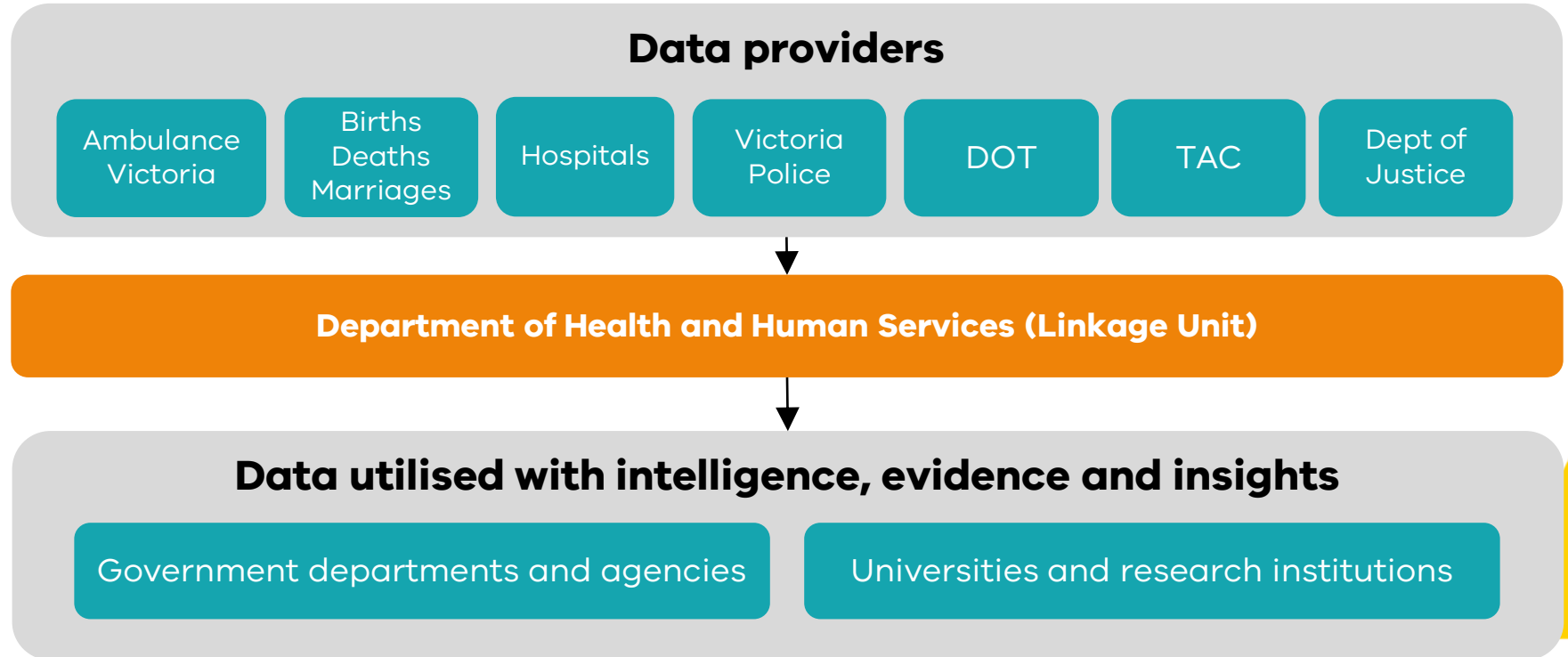
Australia

# Victoria's partnership approach to road safety



# Data, intelligence and insights

How data is collected, interpreted and shared



# What and who are involved

Five-year average proportion of total fatalities

**58%** older vehicles (>10 years)

**5-30%** Light commercial vehicles

**16%** Heavy commercial vehicles

**11%** Motorcyclists

**11%** Young drivers (18-25)

**16%** Older drivers

**11%** Pedestrians



# What contributed

Five-year average proportion of total fatalities

**30%** speed

**5-30%** Drugs

**16%** Alcohol

**11%** Fatigue

**11%** Distraction





# Where fatalities are occurring

Five-year average proportion of total fatalities

**38%** High-speed

rural roads

**23%** Intersections

**20%** Urban arterials

**7%** mid-speed roads



# Infrastructure priorities



## **Preventing run-off-road and head-on crashes in regional Victoria**

**68% of fatality crashes in regional Victoria from 2015 to 2019 are run-off road and head-on crashes**

### **How:**

- Flexible safety barriers, rumble strips, wide centrelines, shoulder widening and sealing

### **Evidence:**

- Early evaluation of the top 20 program shows a 65% reduction in fatal and serious injury crashes from Jan 2016-Dec 2019.
- TAC claims data indicates clear reductions in crash severity. Of eight completed sites analysed, hospital bed days reduced from 261 days to 4 days in the first year post completion

# Infrastructure priorities



**What:** Making intersections safer

**How:** Roundabouts, lighting and visibility improvements, side road activated speeds, controlled right turns, raised intersections, traffic islands and signs.

**Evidence:** Evaluation of the previous intersection program showed a 31% reduction in fatalities and serious injury crashes as a result of these treatments

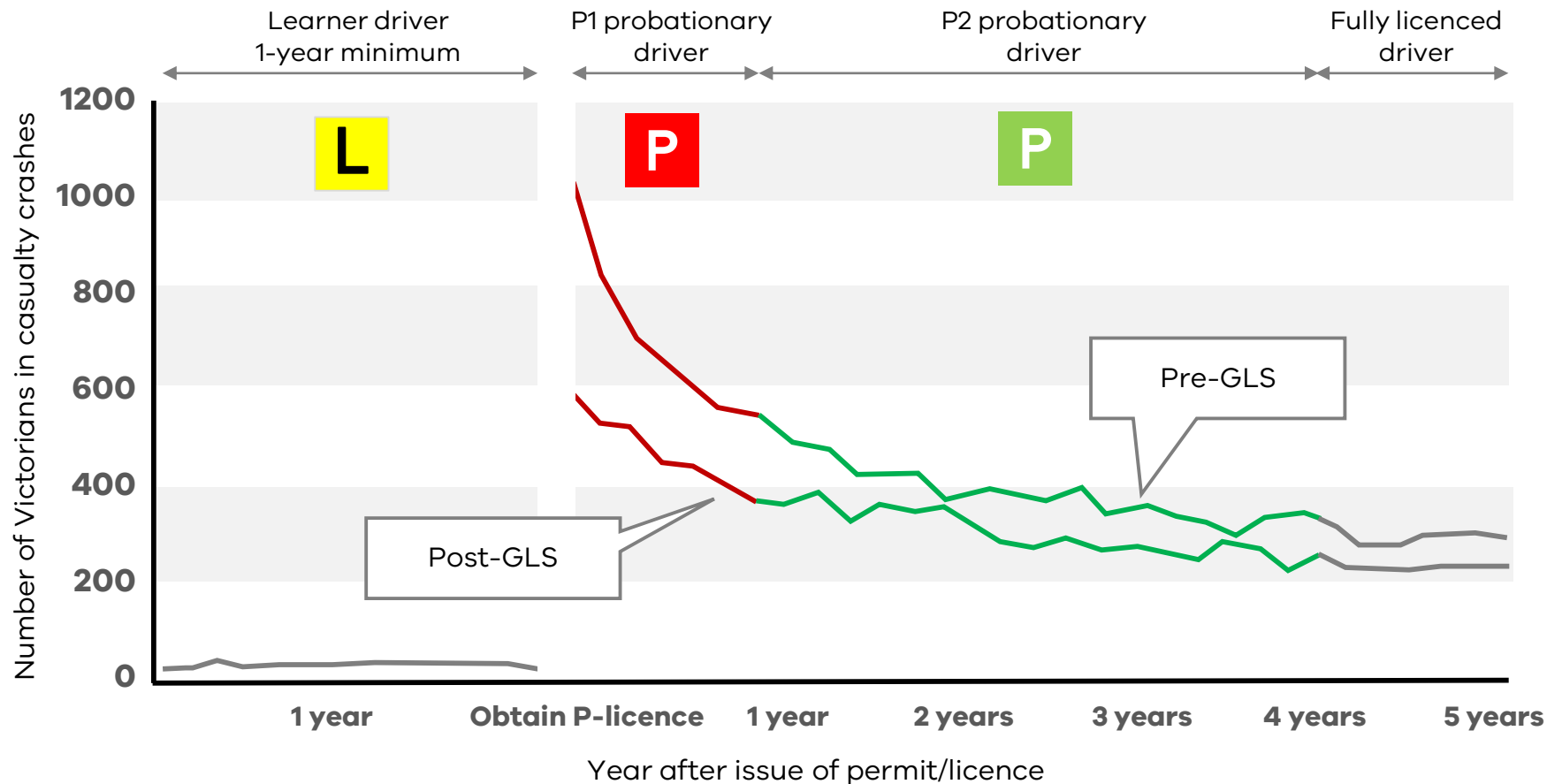


**What:** Local roads - pedestrians and cyclists

**How:** Raised crossings, community gateways, traffic calming e.g. speed humps and curb outstands, shared user paths, cycling lanes, pedestrian operated signals, speed zoning

**Evidence:** Evaluations of this part of the program are currently underway.

# Pre-GLS versus post-GLS



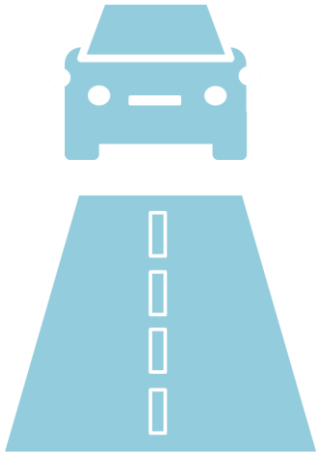
# Evidence-based driver training and education

To complement the GLS

- Road Smart
- TAC Road Safety Education Complex
- Fit2Drive
- L2P Program
- myLearners



# Safer Vehicles



**What:** Ensuring that every Victorian is in the safest vehicle they can afford.

**How:** Safe vehicles with new technologies that start to reduce the impact of human distraction and error using technologies like Autonomous Emergency Braking and Lane Keep Assist

Education Campaigns and awareness such as *How safe is your car* – which now extends to used cars

**What:** Pilots, research and development of connected and automated vehicles

**How:** On-road testing commenced in Victoria in August 2019 and is still underway

Pilots for transition disadvantaged into safer vehicles

Potential to retrofit advanced driving assistance systems into older cars

# The cost of trauma

**6 billion** dollars is the economic cost of road trauma every year

**1** person suffers a serious spinal injury every 18 days

**8** people hospitalised every day

**2** people suffer severe brain injuries every week



# The cost of trauma

- In 2018/19, the TAC provided \$1.6 billion in funding for compensation and services to help a record 58,000 injured Victorians get their lives back on track. This included 21,385 new claims.
- 4,249 clients returned to work, including 133 of our most seriously injured clients;
- This is an increase from the previous year, where the TAC provided \$1.49 billion worth of support services and benefits to 51,000 people in 2017-18.





Robyn Seymour

Deputy Secretary – Network Planning  
Head – Road Safety Victoria

Samantha Cockfield

Head of Road Safety  
Transport Accident Commission