



**Harriet Shing MLC**  
Minister for Regional Development

## **Regional Development Portfolio**

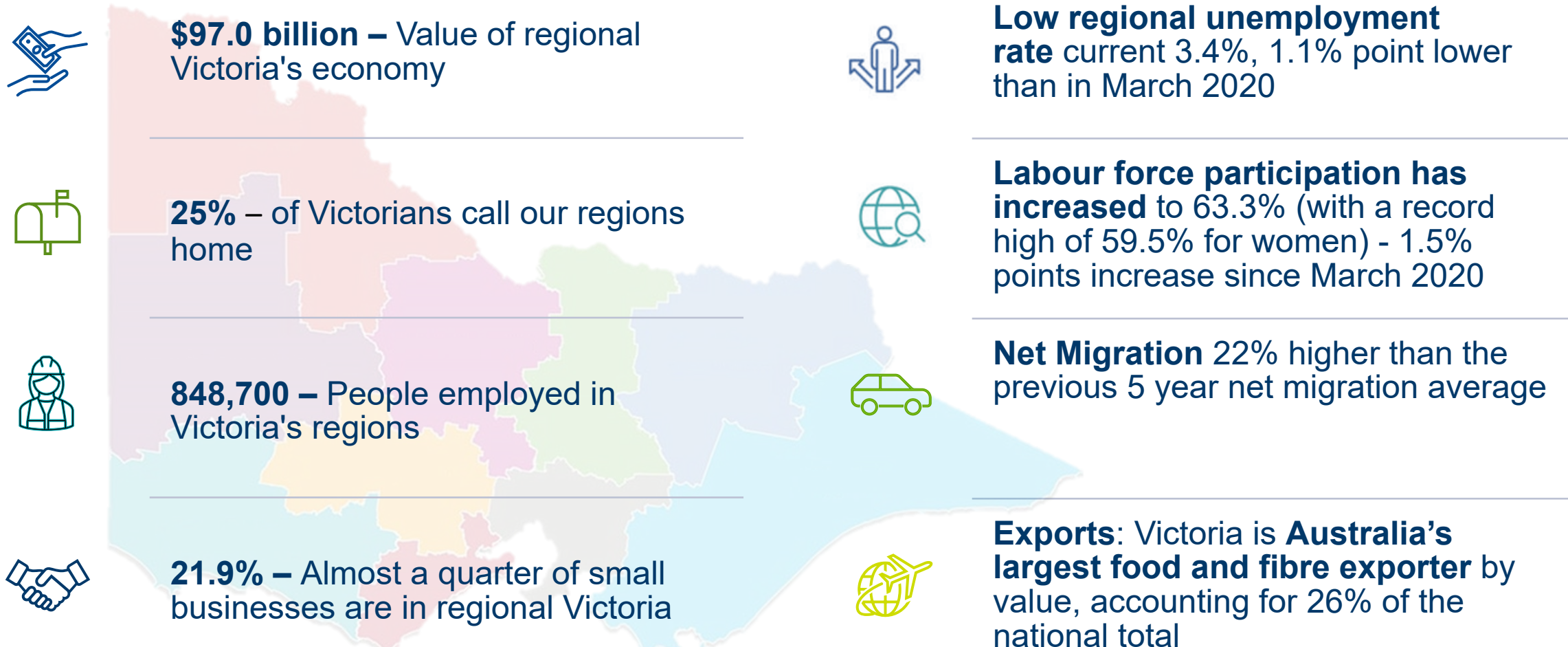
Hearing for Inquiry into the 2023-24 budget estimates

8 June 2023



Jobs, Skills,  
Industry  
and Regions

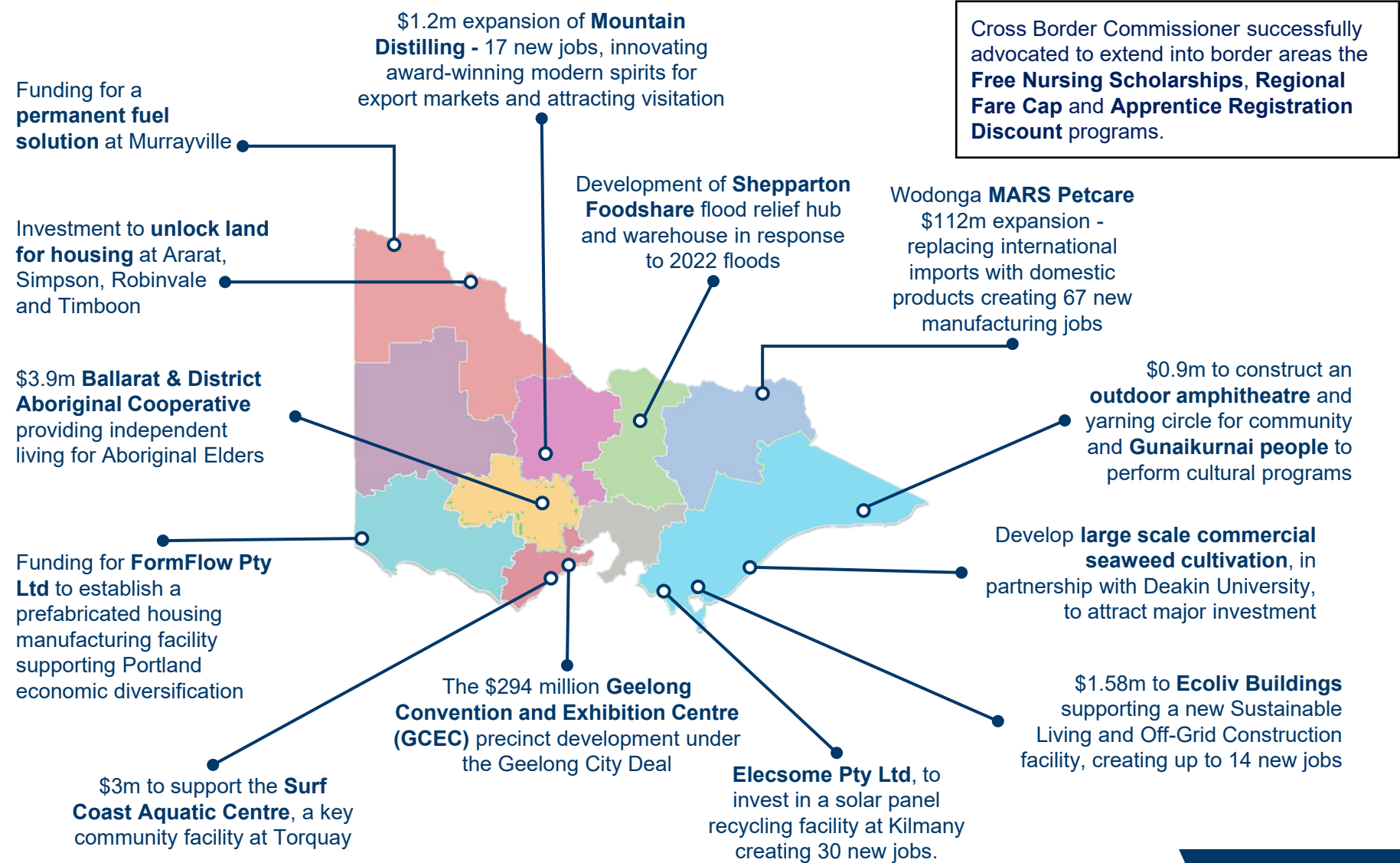
## Regional Victoria's key numbers demonstrate a thriving economy



OUR  
ACHIEVEMENTS

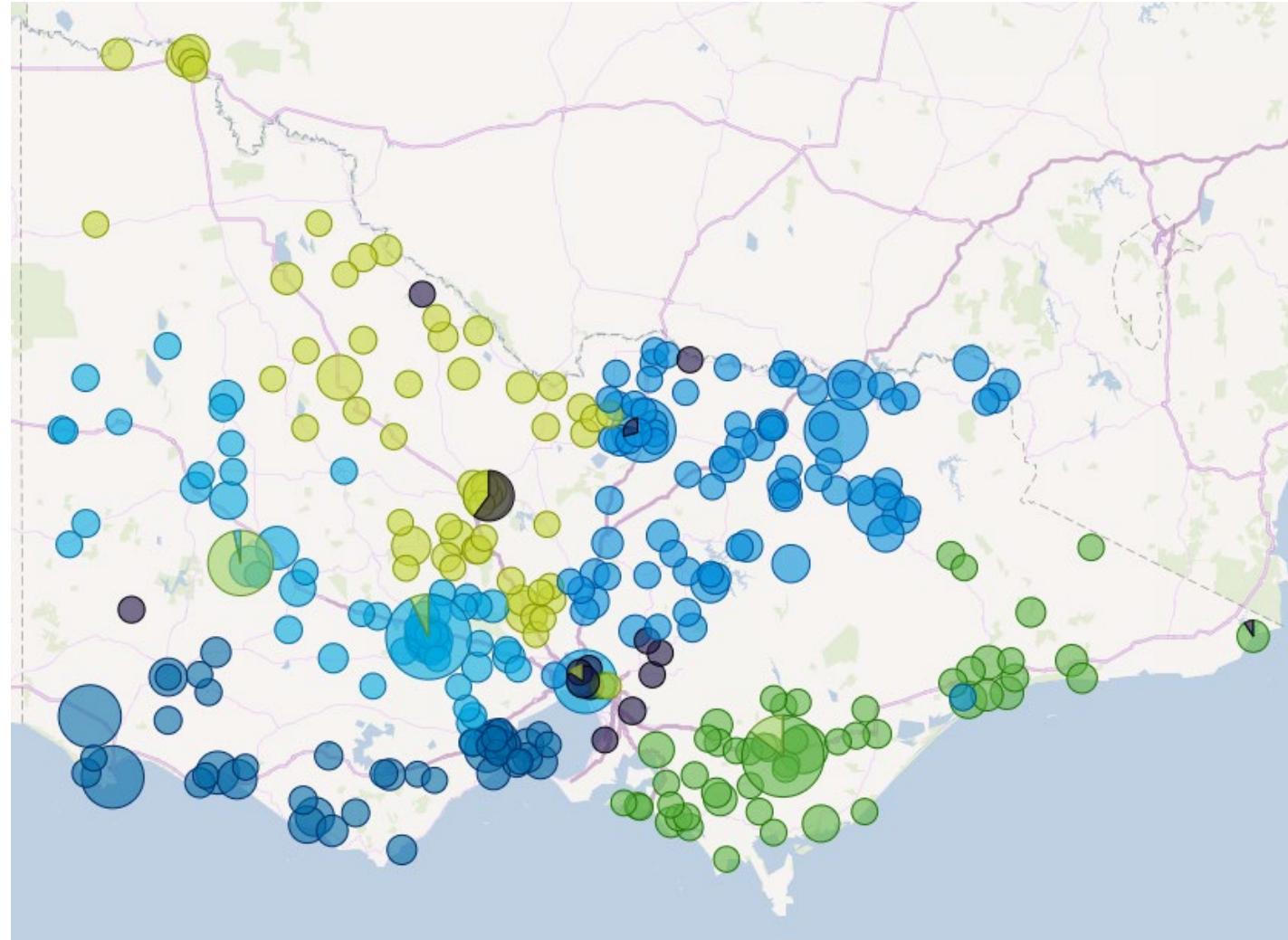
# Driving economic and community growth in regional Victoria

- Facilitating private sector investment to create long-term, quality jobs
- Improving liveability of our regional cities and rural towns
- Delivering enabling infrastructure for regional growth
- Supporting recovery of regional economies impacted by natural disasters and economic shocks
- Attracting workers through innovative workforce housing solutions
- Working in place to facilitate economic diversification – inc. forestry and energy transition
- Collaborating with stakeholders to plan for economic development opportunities, including Regional Partnerships
- Facilitating solutions for border communities and economies



**2022-23 Regional Development initiatives:**

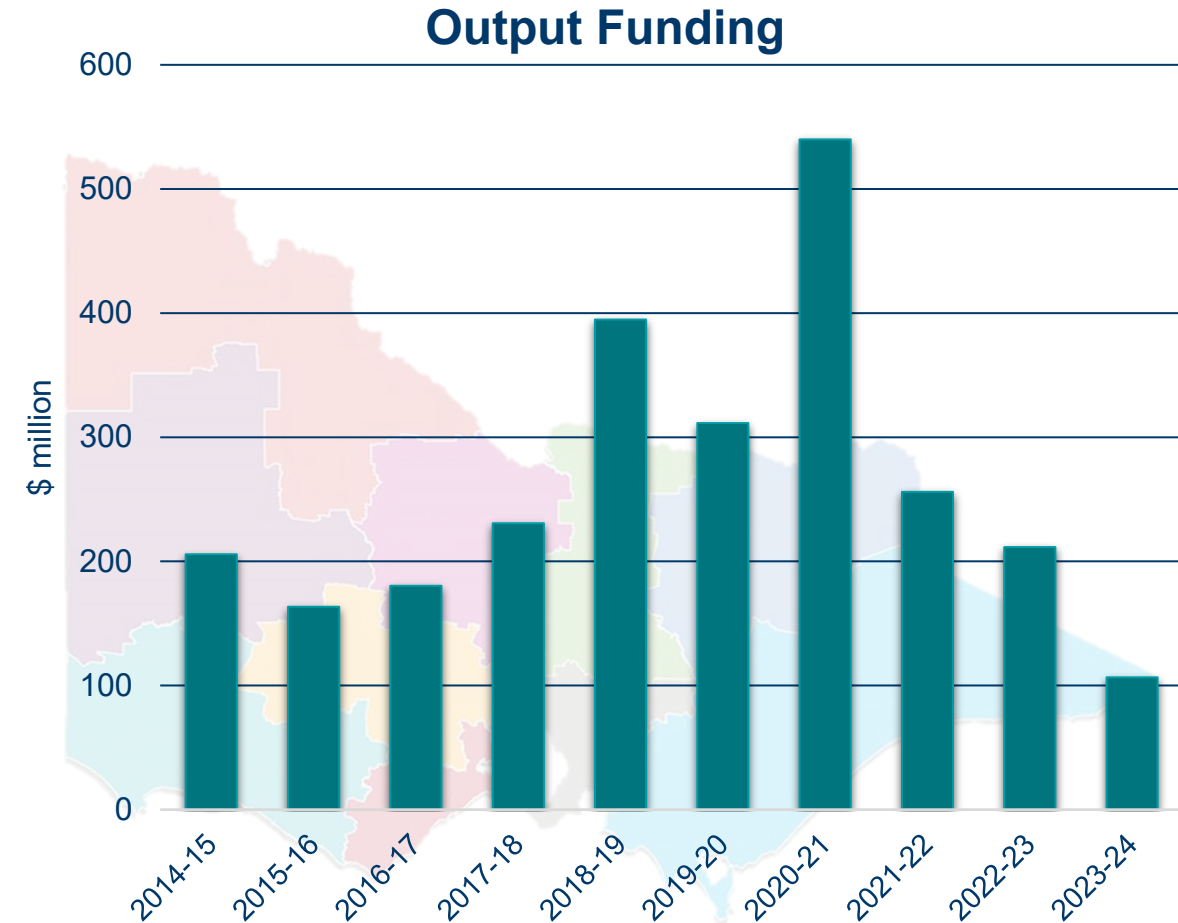
- **201 new regional projects across 5 regions** improving livability, enabling community growth and transforming regional economies
- Over **1,000 new jobs** created in critical industries and businesses
- Leveraged more than **\$500 million in private sector investment** building the capability and capacity of regional businesses
- Facilitated more than **\$60 million in exports** from regional businesses to new international markets



## Targeted investment for communities to thrive

## Key initiatives in the 2023-24 Budget

- **\$21 million** for the **Bendigo Art Gallery**
- **\$7.2 million** for the **Latrobe Valley Authority**
  - continue the **Ladder Step Up program** and **Inclusive Worker Transition program**
- **\$6 million** for the **Bendigo Regional Employment Precinct**
- **\$250,000** for **upgrades in smaller towns**
- **\$10 million** for the **Tiny Towns Funds** to deliver grant funding for communities with up to 5,000 people



\*2013-14 to 2020-21 FY source – relevant departmental Annual Reports

\*2022-23 (revised) and 2023-24 FY source – 2023-24 BP3