

Legislative Council Environment and Planning Standing Committee Inquiry into Fire Season Preparedness – August 2016



Emergency Management Sector

THE VISION: SAFER AND MORE RESILIENT COMMUNITIES

Strategic Action Plan 2015-2018 Priorities

Communities & Business

People & Culture

Governance

Services & Systems

Principles

Community are at the centre of all that we do.

We share knowledge, learn together and always strive to improve.

Clear governance and strong leadership enable us to succeed.

We share responsibility to be ready for, withstand and recover from emergencies.

Respect and cooperation underpin our success.

Safer Together – Policy Direction

Key themes

- Community-based bushfire management: open and on-going conversations about risk
- Land and fire agencies working together to plan & deliver of bushfire management
- Measuring our progress and impacts – on risk, on people and on our environment
- Continuous improvement and adaptive management

1

- Fuel management on public land, guided by a risk reduction target – maintaining bushfire risk at or below 70%

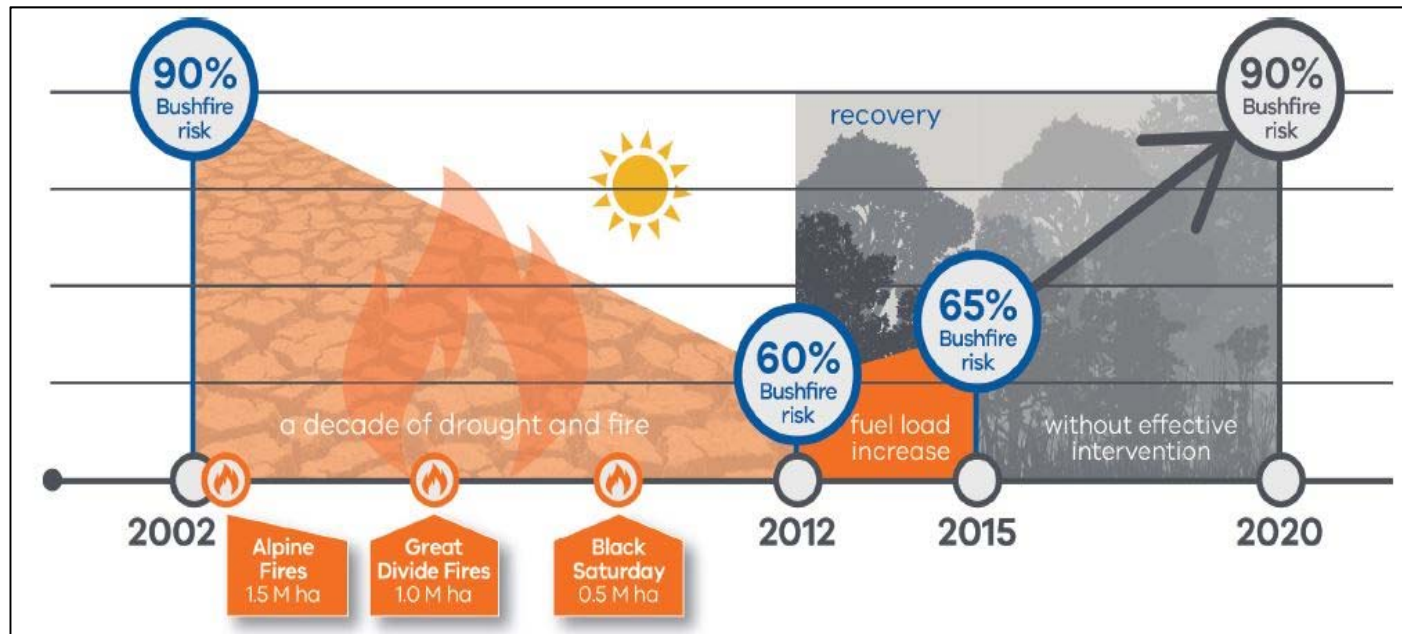
2

- Integrated planning and delivery of fuel management – across land tenures, based on where and how we can most effectively reduce risk

3

- Ultimately, all bushfire management strategies will be measured against risk reduction outcomes

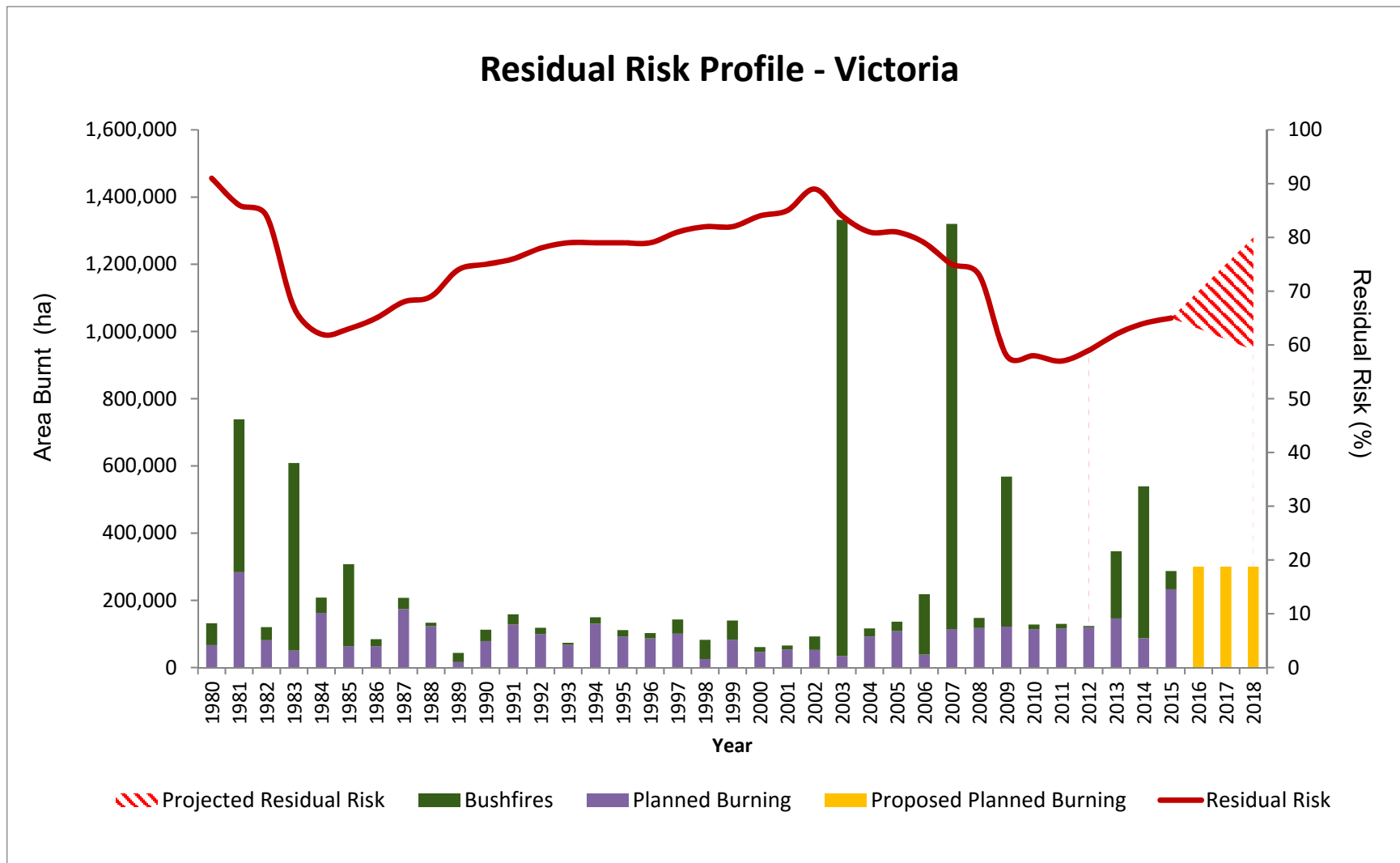
Reducing Bushfire Risk through Fuel Management



In 2002, bushfire risk in Victoria was almost 90 percent. Following a decade of drought and fire, which included the 1.5 million hectare fires in 2002-03, the 1 million hectare Great Divide fires in 2006-07 and the 0.5 million hectare Black Saturday fires in 2009, bushfire risk fell to below 60 percent in 2010.

As forests and parks recover from the impacts of these devastating fires, fuel loads have increased, and bushfire risk has risen. It is now estimated at 65 percent. Fuel management strategies are designed to stop bushfire risk returning to 2002 levels, by reducing fuel loads.

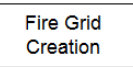
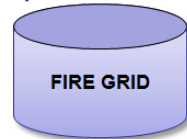
Residual Risk after Fuel Management



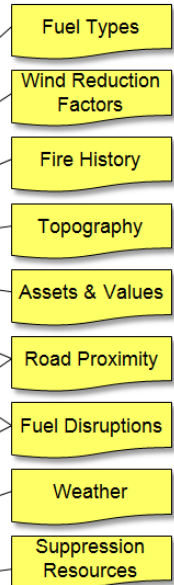
Bushfire Simulation



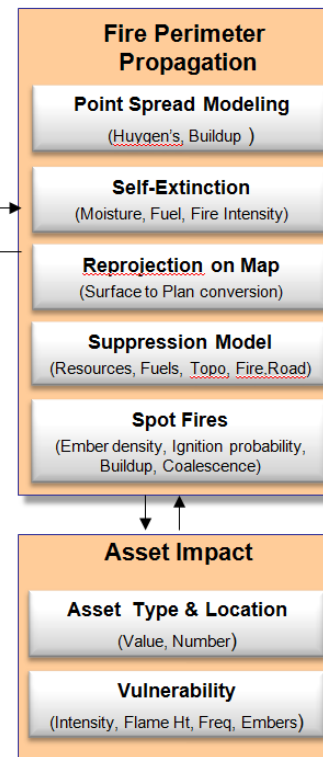
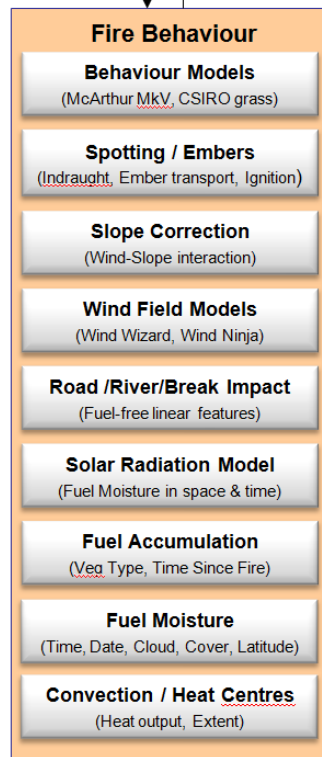
DATA MANAGEMENT Geospatial Database



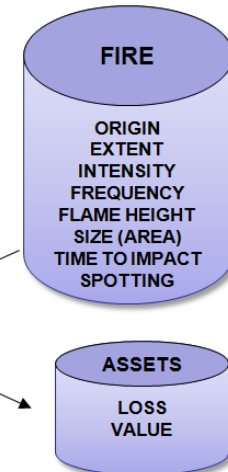
INPUTS



MODELS



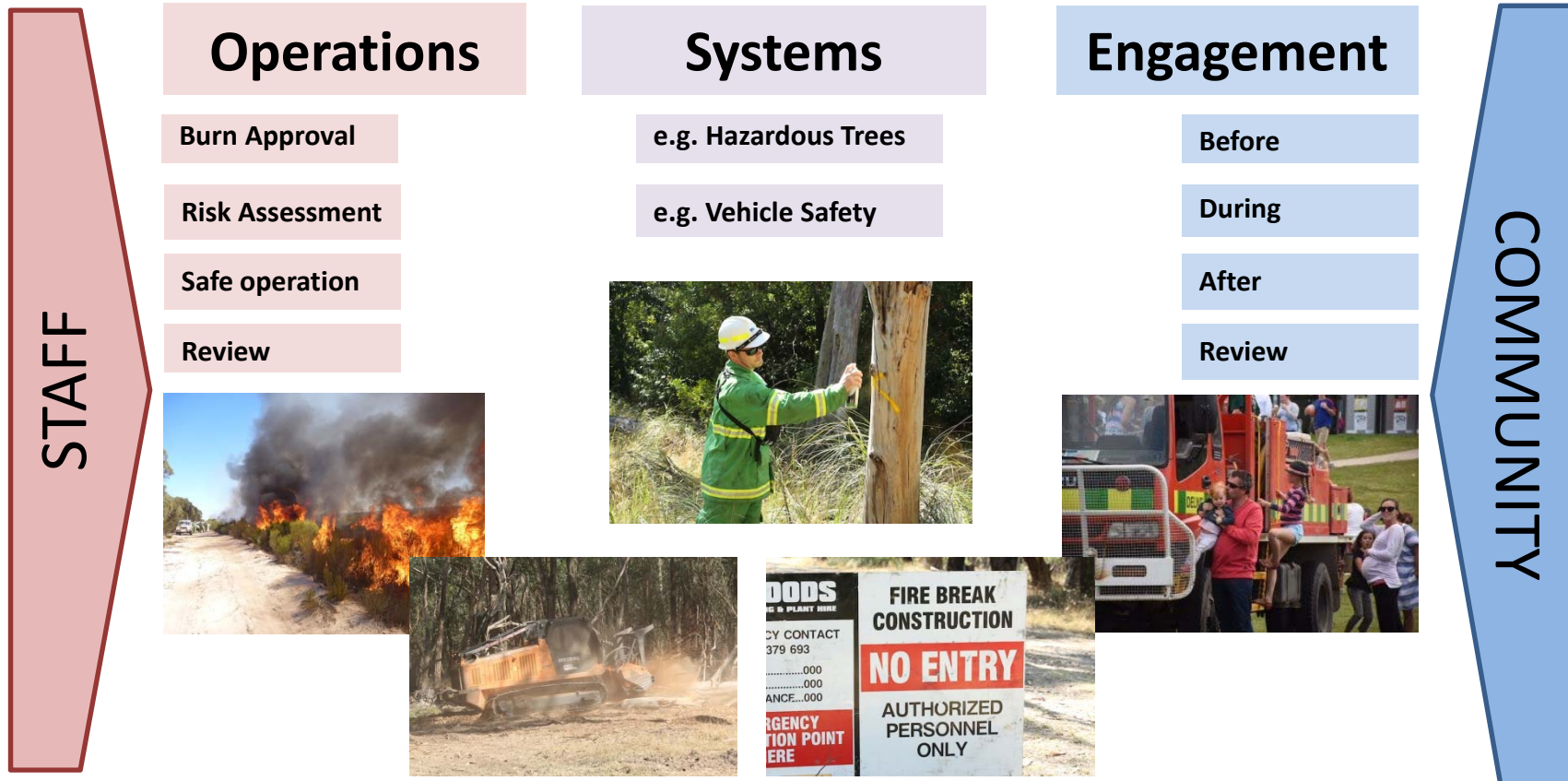
OUTPUTS (to Fire Grid)



Safety

State Strategic Control Priorities

DELWP/Agency: Culture, Legislation, Policies and Procedures



Working Together

Emergency response is enacted through whole of government integrated arrangements overseen by Emergency Management Victoria.

The emergency management sector collectively reviews the effectiveness of its activities and identifies areas for improvement.

DELWP works closely with partner agencies to plan for and deliver fuel management activities.

Delivery of fuel management activities is an important way DELWP and delivery partners build capability and capacity for their broader emergency management functions.

DELWP Arrangements

- DELWP Corporate objectives
- DELWP community charter – *Delivering on our Promise* (April 2016)
- Forest, Fire and Regions Group – responsible for end-to-end forest fire management (March 2016)
- Forest Fire Management (recommendation of IGEM Review 2015)

Fire Season Preparedness

- Over 600 seasonal project firefighters across DELWP and Parks Victoria
- Integrated training for key incident management and aviation roles
- Professional ‘volunteers’ model
- Delivery of fuel management together

Future Opportunities and Challenges

The implementation of *Safer Together* builds on the achievements of sector wide reforms to date and sets clear areas for future investment and reform.

Partnering with communities enhances outcomes in bushfire management but also increases complexity. Communities are not homogenous, and are unlikely to have a unified view of bushfire risk and how it should be managed. Agencies will require new capabilities to broker community outcomes.

The costs of low impact and high value fuel management on public and private land are greater than the costs of large-scale remote planned burning.

Simulation of the Tallarook-Mt Hickey Fire Extent