

Arthur Rylah Institute for Environmental Research

Dr Kim W Lowe Director



A branch within Biodiversity
Division, ECC Group

Unofficial



- What is ARI?
- Our Vision
- Staff and capabilities
- A case study of our science having impact:
 - Strategic Management Prospects



ARI ?

The Arthur Rylah Institute for Environmental Research (ARI)

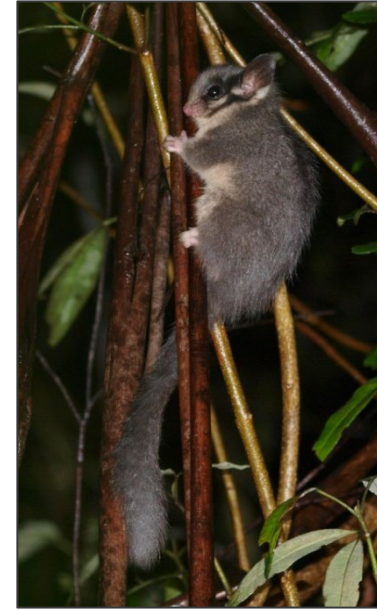
is the biodiversity research centre for DELWP

*“...world class... exceptionally strong work
...and a state-of-the-art modelling
approach...”*

Independent science review (2015)



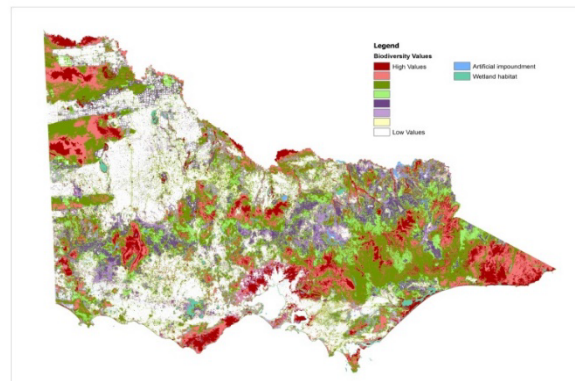
Our science underpins high-quality, evidence-based decision-making by governments and communities



- Currently 112 staff and associates
- 31 PhD qualifications
- Ecology, biometrics, genetics, social science, spatial analysis, technicians, administration
- Associations with most universities

Research at ARI is based on

- Extensive field based data collection
- Using latest equipment and technology
- Strong links to policy and management
- Extensive collaboration, many partners



Strategic Management Prospects:

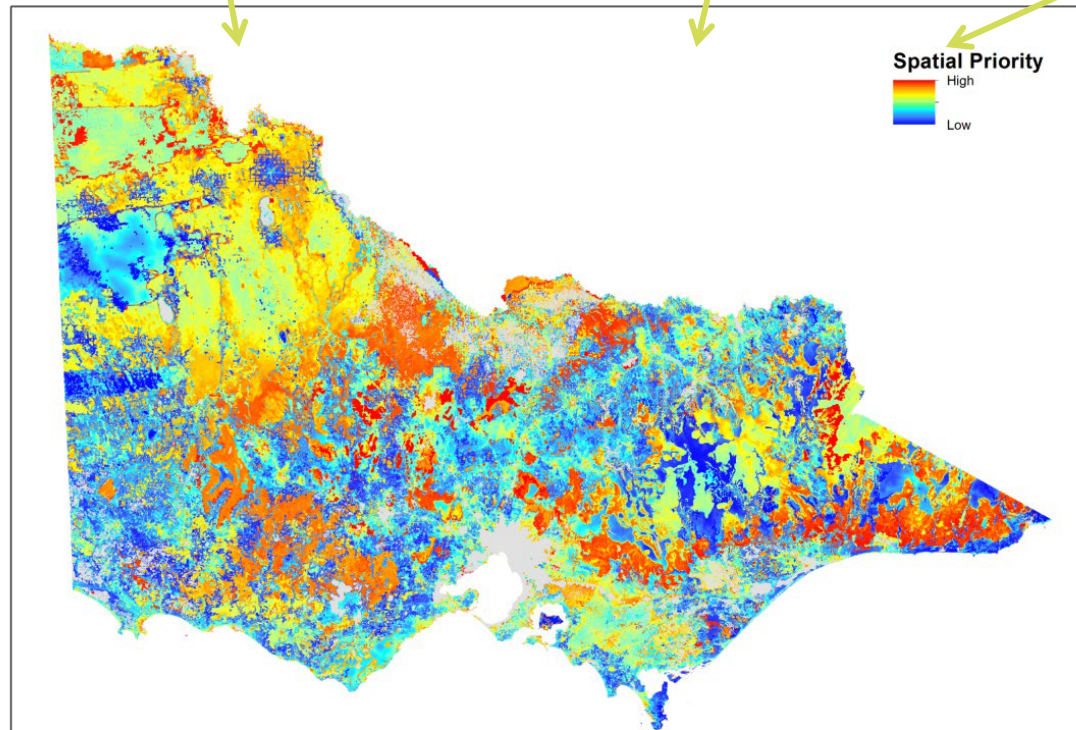
identifying highest benefits for biodiversity at all locations

Species' habitats

Threats

Benefits of actions

Costs



Spatial cost efficient priorities

Inform decisions on:

Where should we act to maximize benefits to biodiversity?

What actions at which locations give us the best return on investment?

What actions promote biodiversity in my region?

What actions should we do to help species the most?

What species benefit from each management action?



ARI website – lots of other fab material

www.ari.vic.gov.au

Please visit our site

The screenshot shows the homepage of the Arthur Rylah Institute for Environmental Research. The header includes the Victoria Government logo, navigation links for 'What we do', 'Latest news', and 'Locations and contacts', a search bar, and a menu icon. The main content area features a large hero image of a river in a forest. Below this, there are several featured articles and sections:

- Latest research:** Threatened native grasslands have been subject to a successful weed reduction program.
- Seminars:** Scientists talking about their research.
- ARI eNews:** Subscribe to receive updates about our latest research.
- Latest research:** A major program to monitor and assess environmental water (VEFMAP) is underway.
- Staff:** Our scientists & technicians and their expertise.
- Publications:** Our reports, factsheets and posters.

Below these sections is a section titled 'ARI research' with four sub-sections:

- Fire:** Response of plants and animals to planned and unplanned fire.
- Threatened plants & animals:** Research on species and communities under threat from various processes.
- Rivers & estuaries:** Habitat restoration, flow ecology and fish responses.
- Wetlands & floodplains:** Health, condition and connectivity.