



# Victorian Parliamentary Inquiry into Commonwealth Support for Victoria

*A Regional Victorian Perspective*

Win Scott – Chair, Mallee Regional Partnership

# 2021 Regional Partnership Priority Actions – cross cutting themes



## Housing

Encompassing the issues of workforce shortages due to housing availability and affordability, accommodation for young people and social housing support to improve social, economic and health outcomes



## Digital connectivity

Widespread response to the need for increased and reliable mobile and broadband connectivity, so that regional businesses, service providers and communities can realise the full benefits of digital innovation and inclusion



## Renewable energy

Support advanced new technologies and innovation in the generation and application of renewable energy and energy storage



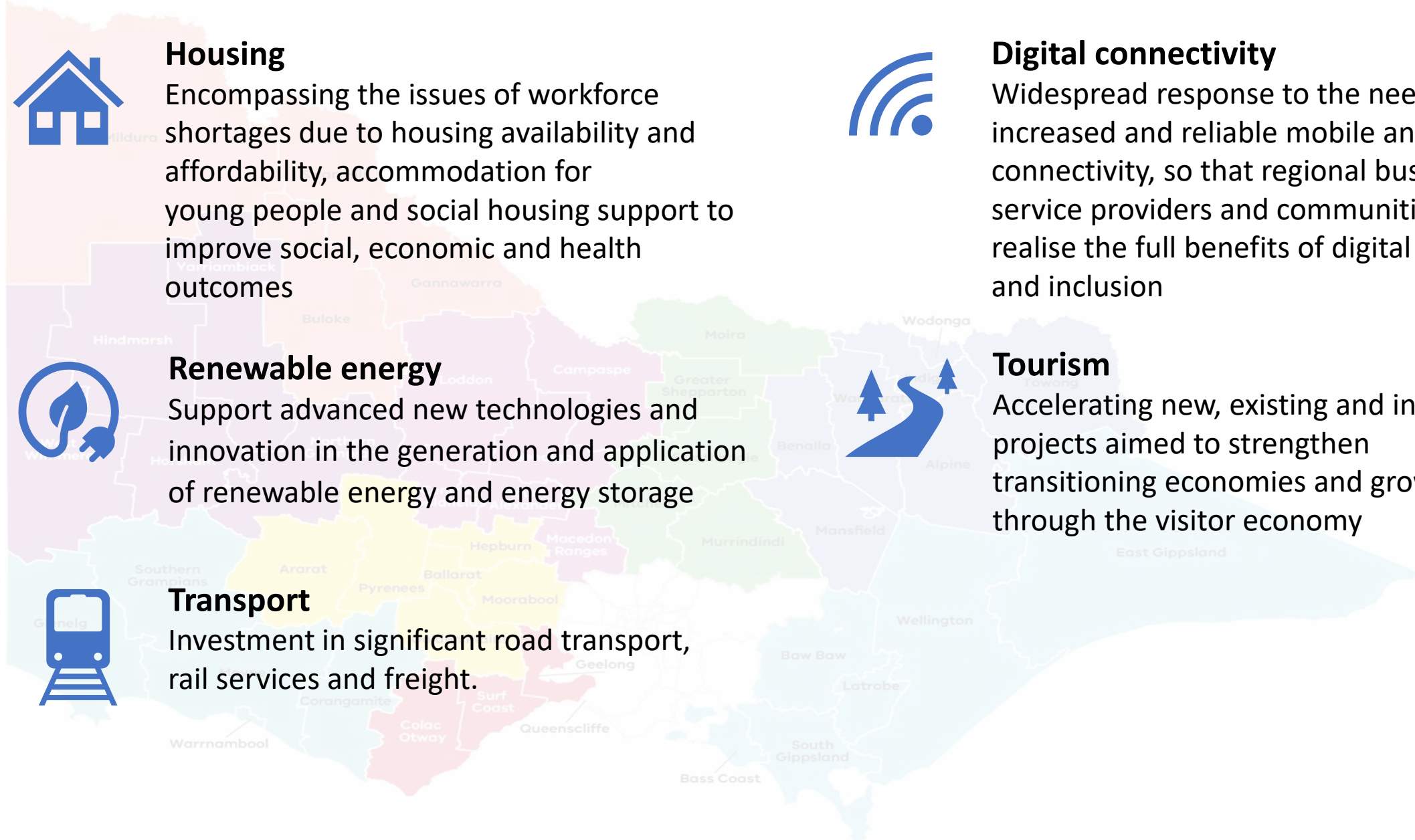
## Tourism

Accelerating new, existing and innovative projects aimed to strengthen transitioning economies and grow jobs through the visitor economy



## Transport

Investment in significant road transport, rail services and freight.



# Enablers for growth and recovery in regional Victoria

