

Inquiry into  
Ecosystem  
Decline in  
Victoria

---

Submission 298

Michelle Thomas

Animalia Wildlife Shelter

- Habitat destruction
- Fires
- Introduced Predators  
cats and foxes
- Introduced species,  
pigs, deer, cattle, cats
- Logging of old growth  
forest

## • Ecosystem decline in Victoria

- the onslaught on our environment and our native animals is relentless
- ATCW permits are issued without any checks to ensure there actually is a problem
- Grossly over estimated numbers to support Kangaroo harvest giving FREE meat to the pet food trade, shoe trade, Asian “traditional” medicine trade,

A large flock of birds, likely frigatebirds, is captured in flight against a sunset sky. The birds are silhouetted against the warm, orange and pink hues of the setting sun. The foreground shows the dark silhouettes of trees and foliage, creating a sense of depth and framing the scene. The overall atmosphere is serene and natural.

Benefits to the ecosystem from  
healthy wildlife populations

- 
- Seeds are spread by lizards, Flying foxes, kangaroo, koala, wallaby, wombats, possums, gliders and birds, leaf killing parasites are removed and eaten



- Our ecosystem is reliant on our wildlife to remove plant parasite burden, prune, seed disperse, pollinate and for germination





- Our forests rely on leaf litter being turned into useable soil nutrient by our iconic large marsupials

- Many plant seeds cannot germinate without going through the gut of a animal



Wombats turn fuel loads into faecal pellets and reduce fuel loads

- This includes grasses, sedges, dried leaf litter, fungi and mosses



- Old growth forest cleared unnecessarily on a daily basis
- Existed for hundreds of years -wiped out in hours
- All Grey headed Flying Fox food trees that need immediate protection



Grey Headed flying fox  
have no choice but to raid fruit  
trees due to lack of available  
forest where urbanization and  
industry has caused habitat  
and food tree loss





This greater glider was given no protection from this logging coup





From a fire like this

Comes  
Injuries  
Like this





- Another controlled burn/cool burn
- Unnecessary Pain, stress, suffering- no they don't go somewhere else
- Fires are set underneath animals on a regular basis because they have been told its ok to do so – this is cruelty



Note the cornea has dried out and has visible damage



**biologist/zoologist responsible  
for the welfare of wildlife “just  
a little bit burnt”**

How can this be considered a  
cool burn ?



Planned burn near  
Portland 2020, koala  
found wandering on road  
next to planned burn  
site, note the leather of  
his nose falling off





Starving left to die  
amongst pushed over  
trees

A lack of respect and  
understanding of their role  
in the environment

Australian iconic species

---

## Victoria's Shame international news

Whilst one side of the state burnt, on the otherside koalas were maimed intentionally

did you know there are species of moths that only exist to eat Koala poo

koalas dying on a recently logged property in victoria. As authorities investigate we're urgently organising our response and stand ready to assist the wildlife carers saving and caring for survivors. We're in contact with the authorities to ensure a full investigation and assurances that this horror will never be repeated.





Hollow logs  
piled on top  
of each other



Under ATCW conditions -Common Long neck turtle eggs will be crushed

No  
Protection  
for this  
echidna



Here is the  
rest of the  
animal

How do  
you flush  
out  
animals  
that dig  
down

Peninsula link  
project

This blue tongue lizard  
didn't stand a chance

This lizard died in agony by  
evisceration/disebowelm  
ent

It was not found or  
protected by zoologists on  
site.

Peninsula link project  
Winter 2010



Eastern  
Spinebill found  
amongst the  
debris of  
Peninsula Link





Destruction of Habitat outside of footprint of projects, is well documented.





- We can't get in there to find injured wildlife –
- but a fox , raven, snake and cat will
- Biologists and Zoologists are hired to protect the animals but fail to do so



Swamp rat nesting areas are in almost every area- like other common species and when habitat is lost healthy animals by law must be euthanised



Illegal clearing -  
Area to left of  
green barrier was  
to be untouched

Declared as  
critical habitat by  
zoologist

No consequences  
Food trees for  
gliders.



Crushed to death  
Lack of empathy and  
Greed caused this

Critically endangered Long Footed Potaroo

Logging Coup far east Gippsland



We need a  
state wide cat  
curfew



Cat Attack Ringtail

- Fur loss
- Puncture wounds caused by the upper canine teeth of a domestic cat.

After clearing of land

predators enter bushland with relative ease.

Southern Brown  
Bandicoot  
Juvenile

Cause of death  
Cat Attack

Toxoplasmosis  
Multiple wounds



Microbat pups from felled tree  
in development in Cranbourne  
2019

28 DEGREE DAY

We need 2x  
wildlife  
spotters on  
every project



Note, wrinkled skin, low  
turgor level  
= dehydrated pup  
Requires emergency care

VETS will not handle them  
due to OHS issue of ABLV  
(Australian Bat Lyssa Virus)  
concerns,

Only inoculated wildlife  
carers are willing to handle  
and help

If Left would have been  
eaten by cats or ravens



Kangaroo feet

Osteomyelitis (Bone infection)

worn down nails from hopping on paved road

Habitat destruction  
Mornington Peninsula



Grey headed flying foxes are responsible for seed dispersal and the only night flying pollinator of night flowering species, such as Mountain Ash

Crucial to habitat recovery after fires

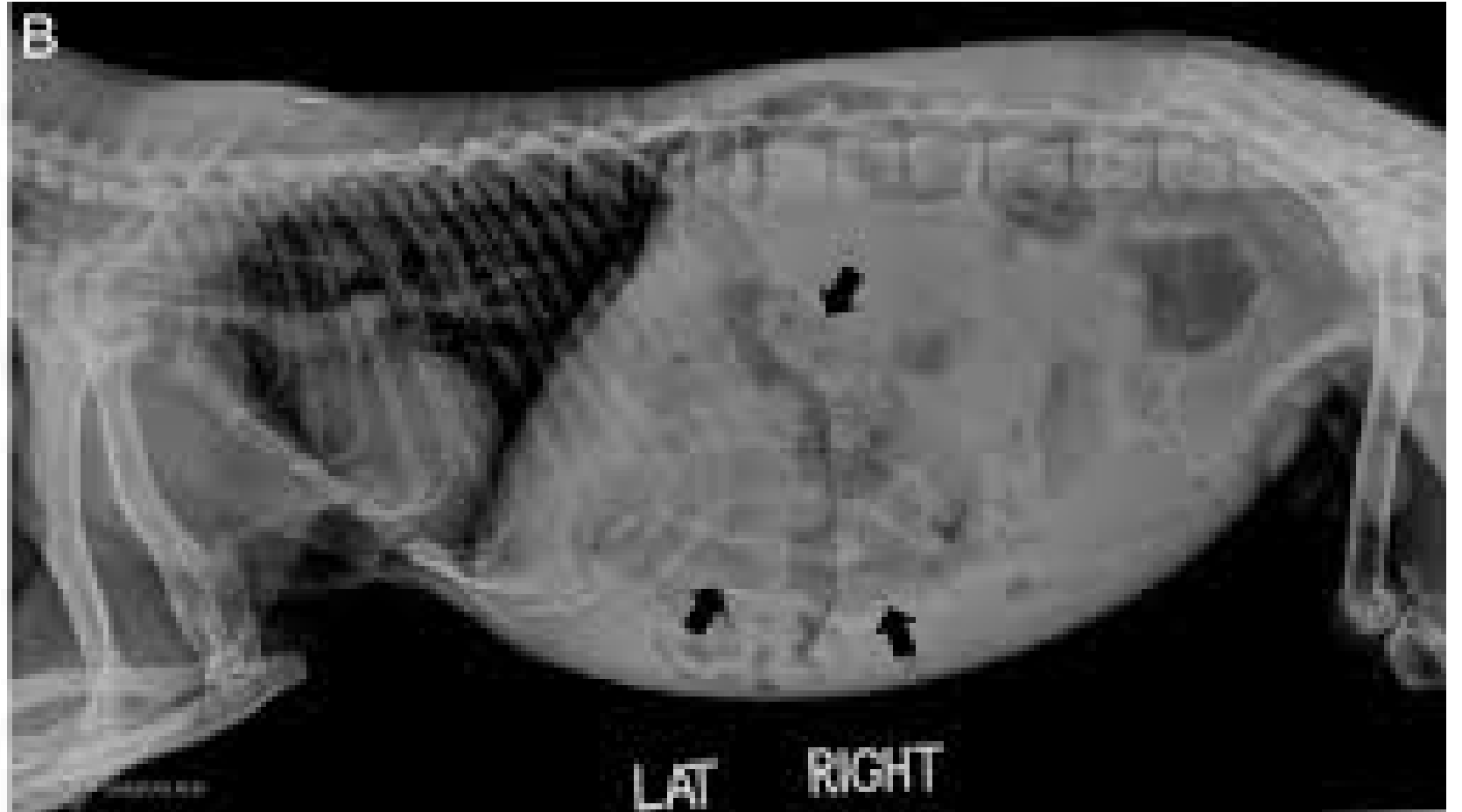
Spreading seed along the entire east coast they are known as a keystone species



Eastern  
Spinebill found  
amongst the  
debris of  
Peninsula Link



# Intussusception in a koala



**Causal effect –stress**

**Outcome death**



Veterinarian specialists  
can repair injuries

However blood clots  
moving post surgery  
caused a massive stroke

Another death a common  
outcome for Koala's



Koala populations on the Peninsula are already under enough pressure from habitat destruction = Koala FOOD tree Loss



Facial trauma was superficial ,Xray revealed a broken spine and he was euthanased

A common outcome for a koala

# Recommendations to reverse ecosystem decline

Animalia Wildlife Shelter

Michelle Thomas

- Wildlife protection zones and corridors must be increased
- wildlife crossing under passes and over passes must be built into the planning for all road projects
- Immediate ceasing of old growth forest logging (in ten years nothing will be left)
- Statewide Domestic Cat curfew and a plan to move to enclosed cat runs as a high priority.
- Offset targets to be implemented in the area affected by projects/roads works
- Allow and support the great forest national park project
- Retain habitat where possible and by doing so secure our water future
- Cull of feral animals to eradicate from the landscape all pigs, goats, deer, cat and foxes.
- Continued reintroduction of lost species such as quolls when culls have safely removed threats.
- Pause and review of current fire prevention management plans
- Remove the use of flash 21B in logging coup burns
- Removal of VCATS ability to override local council planning
- Replanting programs for indigenous koala feed trees
- Increase marine sanctuaries and their boundary's to allow shell fish, fish stock and cephalopods recovery
- Increase fines for cruelty cases impacting our native wildlife.
- A new arm of government solely responsible for the protection of our wildlife