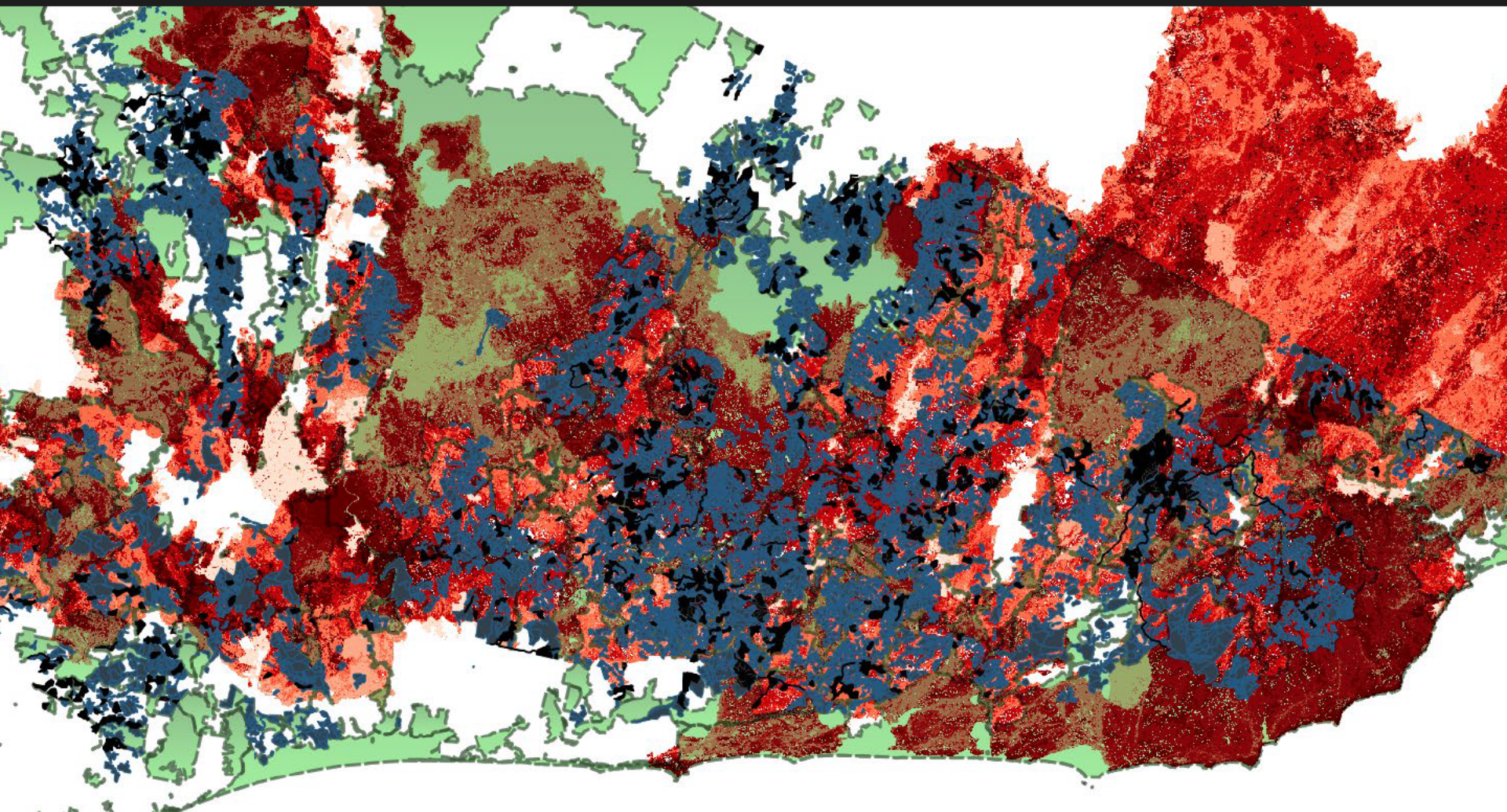


East Gippsland – once the Noak's Ark of Victoria for rare and threatened wildlife

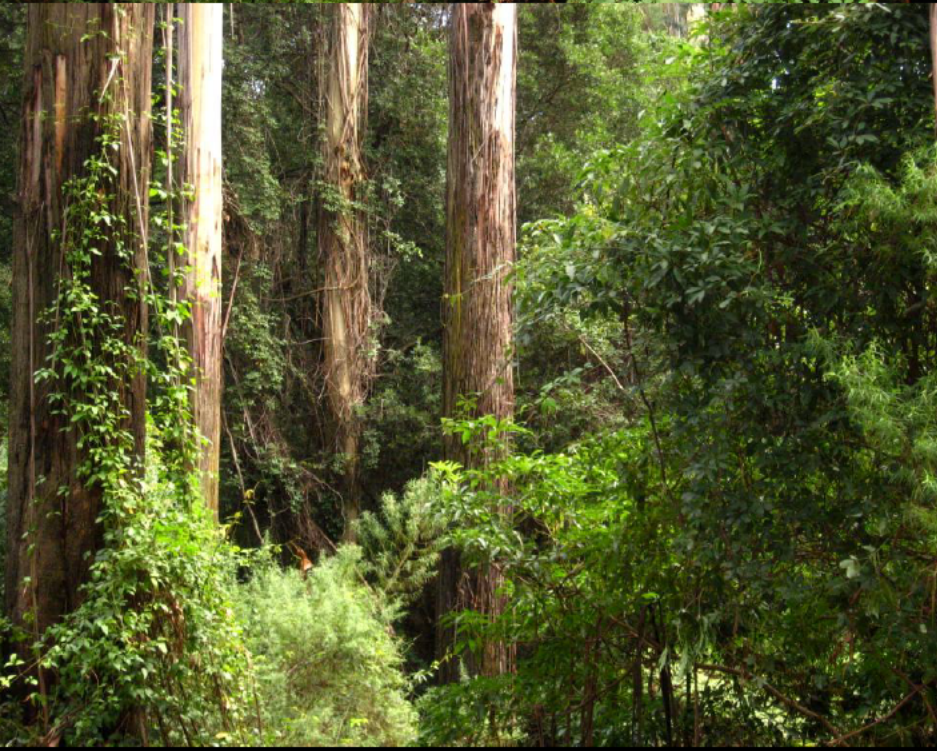


Parks & reserves

Logging history

Private land

Bushfires – 2019-20





**IT DOESN'T
GROW BACK
AS A FOREST**





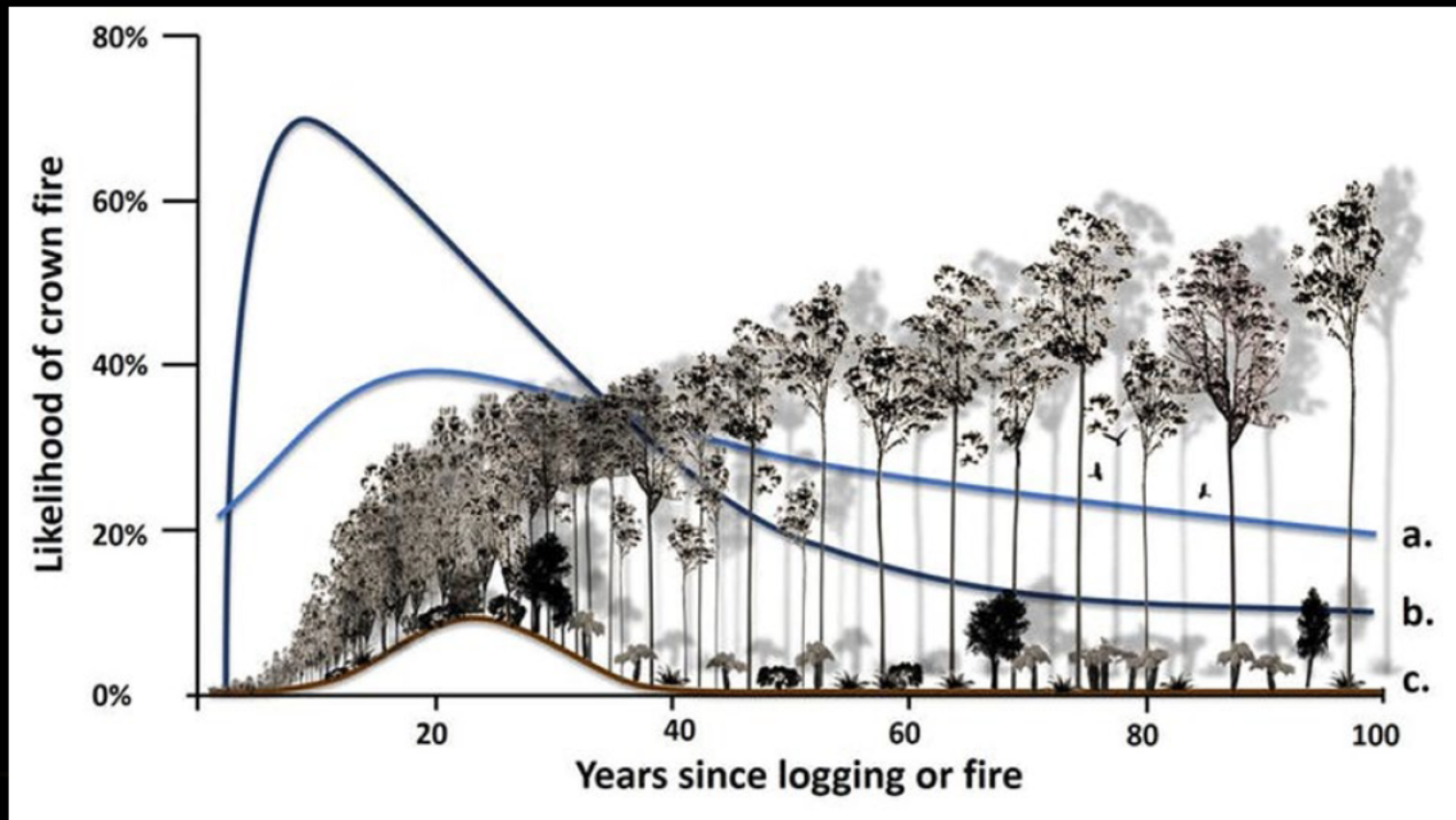
What is coaxed back is managed as industrial tree farms



FIRE-RESITANT FORESTS = WILDLIFE REFUGES

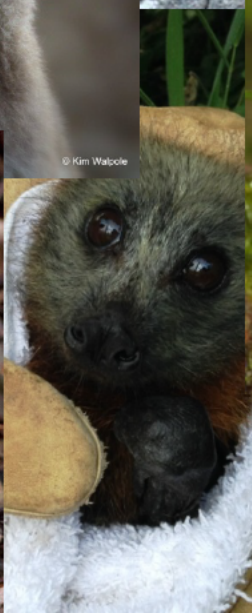


LOGGING REGROWTH – CLOSER TO GROUND, DENSE FOLIAGE – BURNS FAR MORE INTENSELY



BROWN MOUNTAIN OLD GROWTH FOREST





© Kim Wapole