

Submission for Inquiry into Renewable Energy in Victoria

**Tony Goodfellow,
Victoria/Tasmania
Coordinator**



RE-ALLIANCE

Acknowledgment of Country

I'd like to acknowledge the Wadawurrung people of the Kulin nation as the custodians of the land on which I'm meeting you, and pay respect to their elders past, present and emerging.

I also acknowledge that we are meeting online today and that therefore we will also be meeting on the country of numerous Aboriginal nations.



About RE-Alliance

RE-Alliance is an independent, not-for-profit working to secure an energy transformation that delivers long-term benefits and prosperity to regional Australia.

Our work includes:

- Working with communities in renewable energy zones to mitigate impacts and lead conversations about the benefits and opportunities that will come to the region
- Advocating to industry and government for RE development practice that includes and benefits local communities

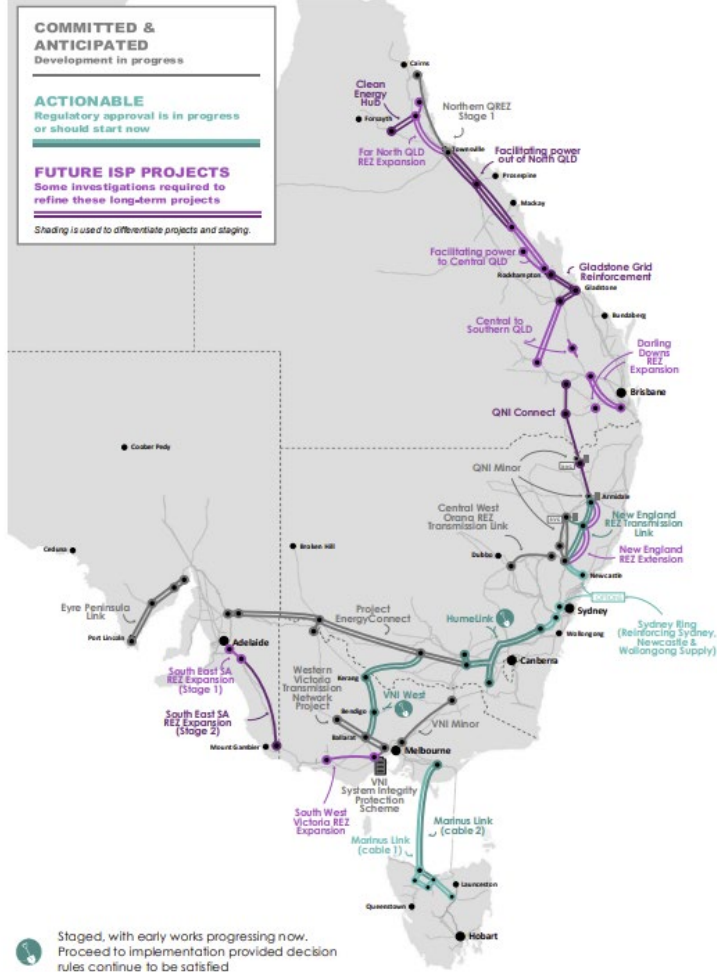
We welcome new members from renewable energy communities, workers in renewable energy and any one interested in a fair energy transformation.





The rollout of the Renewable Energy Zones brings big opportunities for communities

Figure 2 Network projects in the optimal development path



AEMO's Draft 2022 Integrated System Plan estimated more than 10,000 km of new transmission infrastructure will be required by 2050.

x15+

**TODAY'S INSTALLED
RENEWABLE ENERGY
CAPACITY IS REQUIRED**



Replacing electricity generation from traditional power plants is an important first step, but even more challenging will be to decarbonise energy consumption across the rest of the economy

Petrol and diesel road transport

Diesel rail transport

Aviation fuels

Industrial process heating

Building heat

Shipping fuels



Renewable electricity can directly or indirectly reduce more than 75% of Victoria's economy-wide greenhouse gas emissions

Grid-scale wind and solar capacity required to achieve net-zero must rise exponentially



Victoria's Offshore Wind Policy Directions Paper March 2022 estimates that there needs to be 15 X today's installed renewable energy capacity is required for net zero emissions.

**Renewable
energy host
communities
are critical in
the energy
transition**

Roadmaps to Zero Emissions



GRAMPIANS REGIONAL ROADMAP TO NET ZERO EMISSIONS

Prepared by the Grampians New Energy Taskforce

Loddon Mallee Region
Renewable Energy Roadmap

CENTRAL VICTORIAN Greenhouse Alliance
VICTORIA
Environmental Land Institute
Land Transition

Hume Region
Renewable Energy Roadmap

REGIONAL PARTNERSHIPS GOULBURN
REGIONAL PARTNERSHIPS OVENS MURRAY

bsw
ref

BARWON SOUTH WEST RENEWABLE ENERGY ROADMAP
CAPTURING OUR COMMUNITY'S VIEWS

Southern
Gippsland
Renewable
Energy
Roadmap

8 Dec 2019

Victorian Regional Renewable Energy Roadmaps

The image shows the cover of a report. The background is an aerial photograph of a green field with a transmission tower and power lines. The text is overlaid on a semi-transparent white box at the top left. The title 'BUILDING TRUST FOR TRANSMISSION' is in bold, dark blue, uppercase letters. Below it, the subtitle 'Earning the social licence needed to plug in Australia's Renewable Energy Zones' is in a smaller, dark blue font. The date 'July 2021' is also in dark blue. At the bottom, the RE-ALLIANCE logo is visible, featuring a stylized sun and the text 'RE-ALLIANCE CONNECTING PEOPLE TO POWER'.

**BUILDING TRUST FOR
TRANSMISSION**

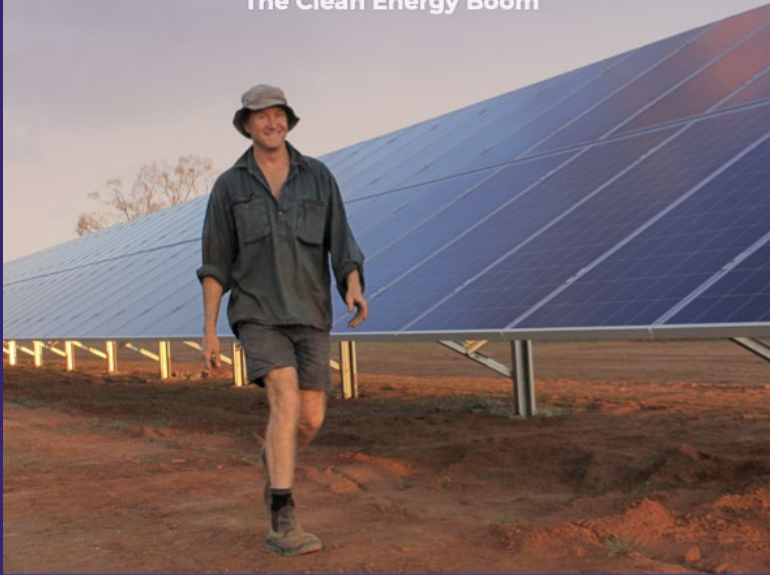
Earning the social licence needed to plug
in Australia's Renewable Energy Zones
July 2021

**Our report, *Building
Trust for
Transmission*, was
published in July last
year.**


RE-ALLIANCE
CONNECTING PEOPLE TO POWER

COMMUNITY BENEFITS HANDBOOK

How Regional Australia Can Prosper From
The Clean Energy Boom



RE+ALLIANCE

CONNECTING PEOPLE TO POWER

**Our report,
*Community Benefits
Handbook*, last year.**

Renewable Energy Zones

Submission Recommendations

- Need for communicating the clean energy transition that is underway
- Need for local leadership - REZ authorities?
- Need for better engagement and inclusion of Traditional Owners
- Regional community enhancement funds



Community Engagement and Benefit Sharing in Renewable Energy Development in Victoria

A guide for renewable
energy developers

Updated July 2021



Environment,
Land, Water
and Planning

- REZ level engagement and benefits

Renewable Energy Transmission

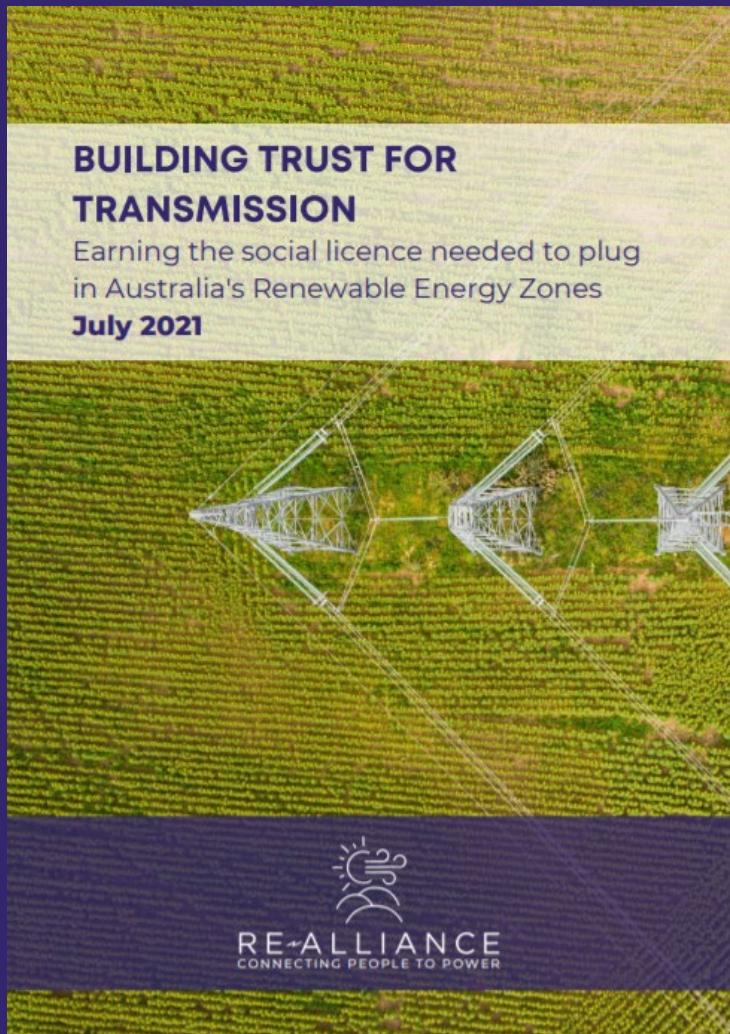
Submission recommendations

- Prioritise social licence
- Address skills shortage
- Role of state in roll out of transmission

Recommendations

- Earlier and deeper community engagement
- fairer and more transparent compensation for landholders
- neighbour benefit payments
- community benefit sharing

This could be done through establishing new state legislative frameworks or changing the national framework (RIT-T)



Others

Submission Recommendations

**Community co-ownership
and co-investing in large-
scale renewables**

**Jobs and economic
benefits**

**Implications of the energy
transformation**



CONTACT



Tony Goodfellow

Victorian Coordinator

tony@re-alliance.org.au

FOLLOW

Facebook

Twitter

Linkedin

facebook.com/reallianceaus

twitter.com/reallianceaus

linkedin.com/company/austwindall

Questions