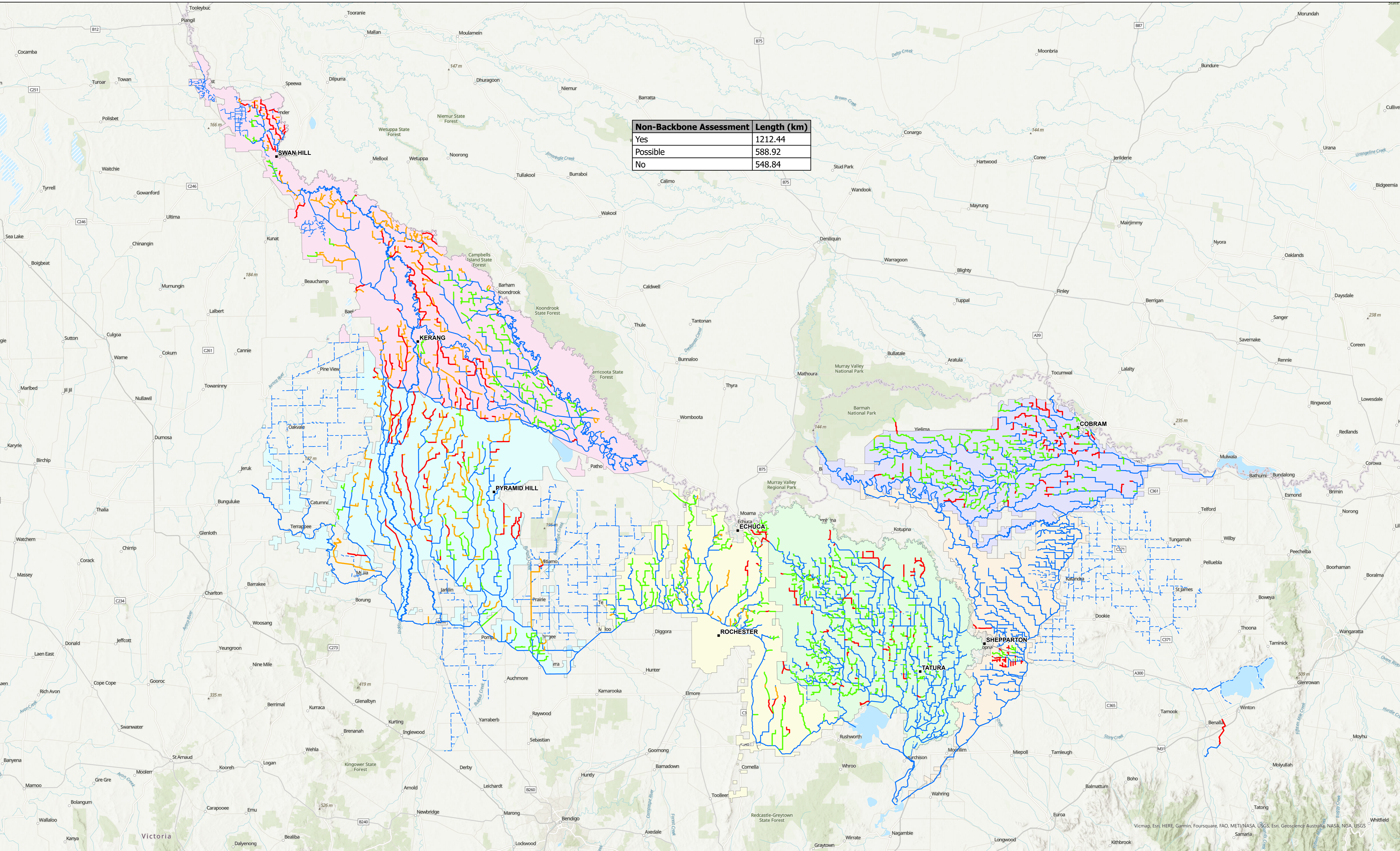



NON-BACKBONE STRATEGIC ASSESSMENT

GOULBURN-MURRAY WATER

Non-Backbone Assessment	Length (km)
Yes	1212.44
Possible	588.92
No	548.84

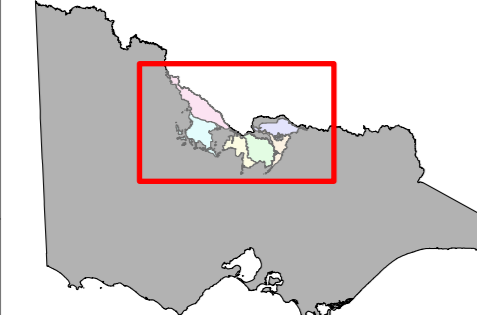




65643

 21 November 2023

GOULBURN-MURRAY WATER
 40 CASEY STREET (PO BOX 165)
 TATURA VIC 3616
 Ph (03) 5833 5500 Fax (03) 58245827
 gmsupport@gm-water.com.au



Non-Backbone Strategic Assessment

— Yes - Can be removed

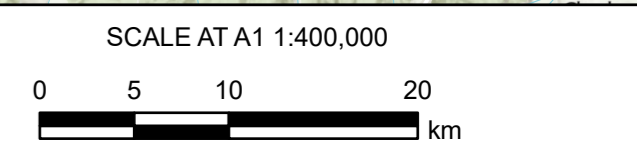
— Possible - May be removed with agreement

— No - Must be retained

G-MW Channel

— Channel

- - - Pipeline



The content of this product is provided for information purposes only. No claim is made as to the accuracy or authenticity of the content of the product. In no event will G-MW, its agents, instrumentalities and employees be liable for the accuracy of the information contained within this product nor its use or reliance placed on it. The information used within this product is provided on the basis that all persons accessing the information undertake responsibility for assessing the relevance and accuracy of its content.

2/2023_Products/65643/65643/65643.aprx