

A large group of motorcyclists is riding down a city street. The background shows modern buildings and a clear sky. A yellow rectangular box highlights the title text.

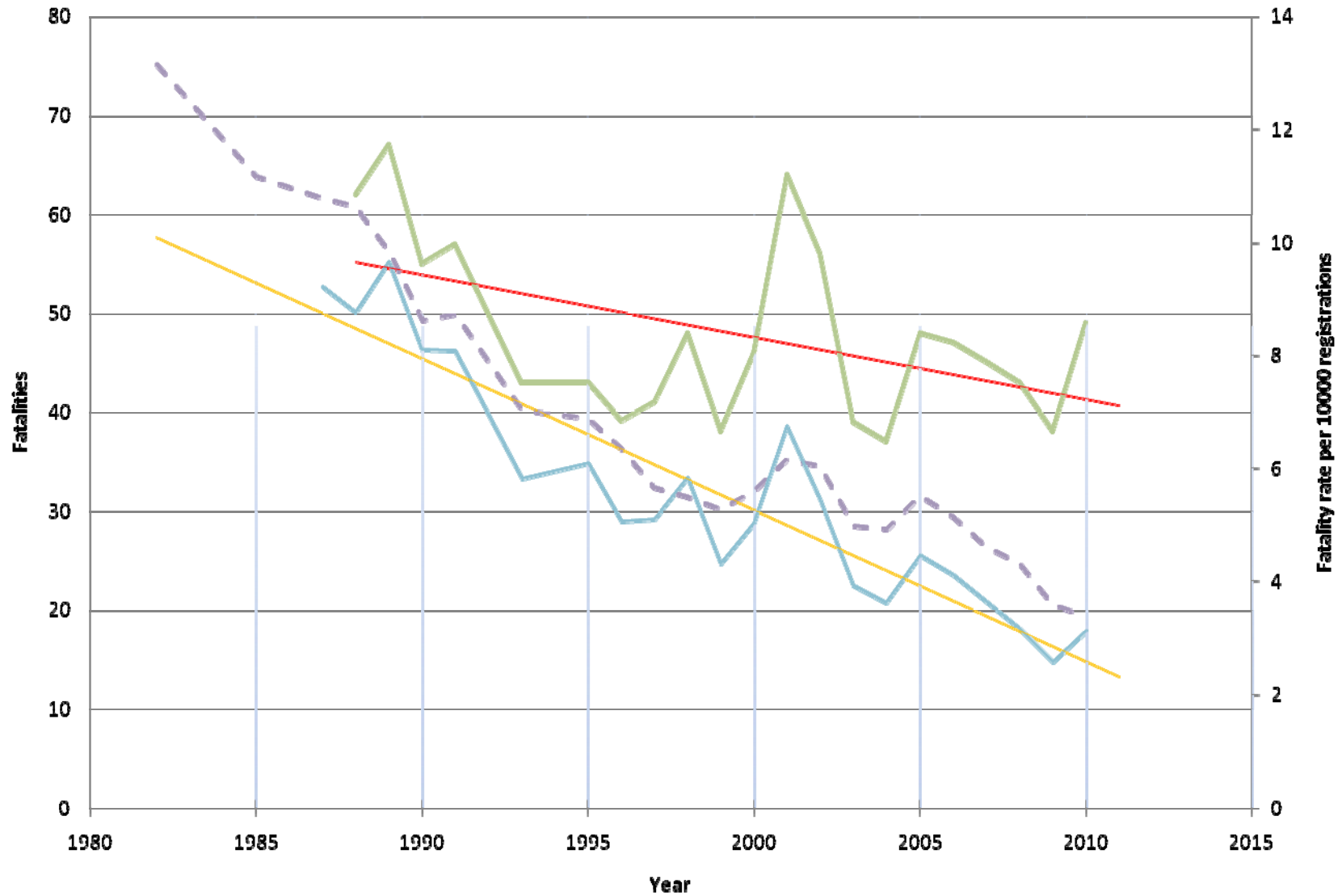
Victorian Motorcycle Council

Motorcycle Safety Inquiry Public Hearing

Rob Salvatore

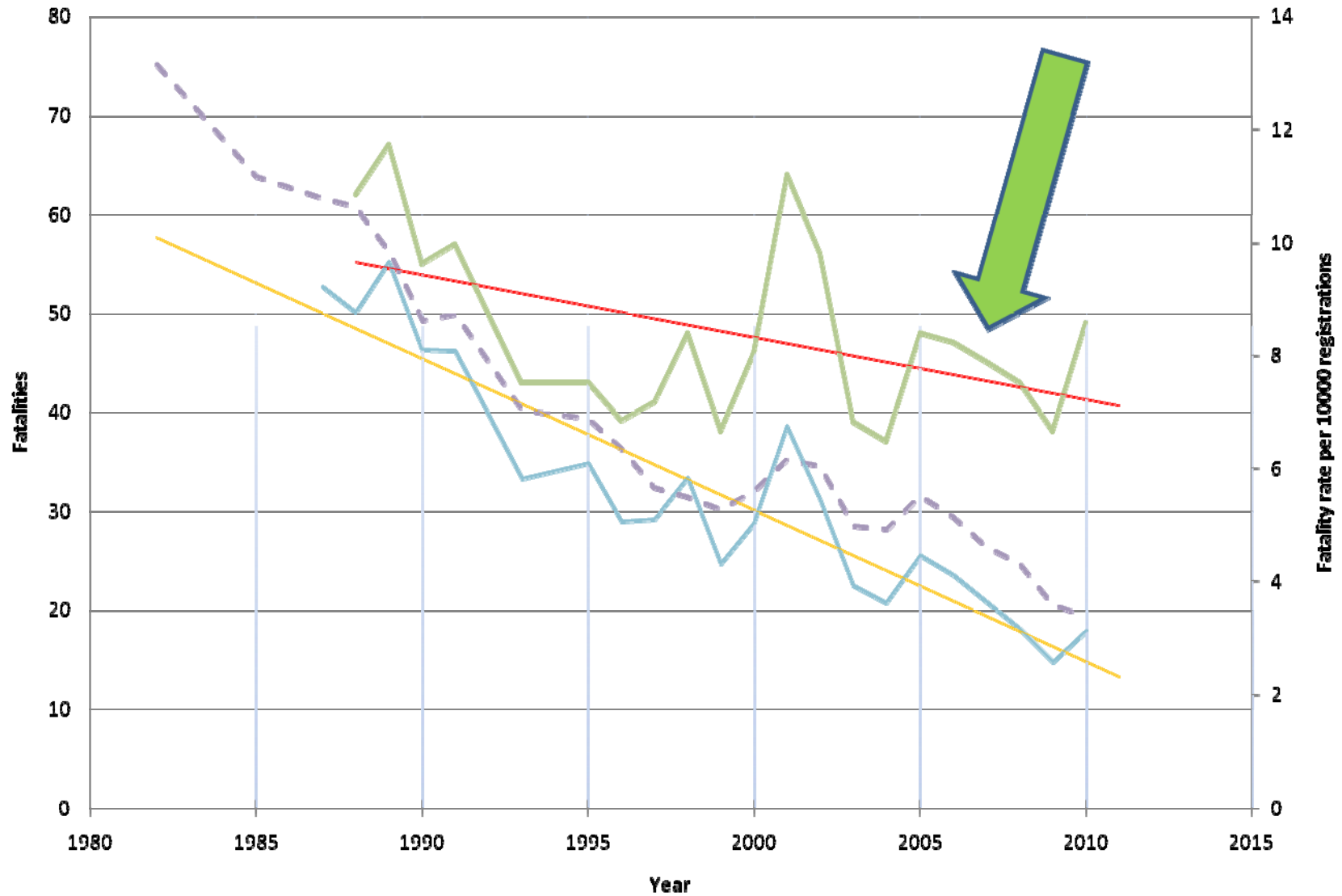
Bronwyn Sorrensen

Victorian fatality numbers and rate



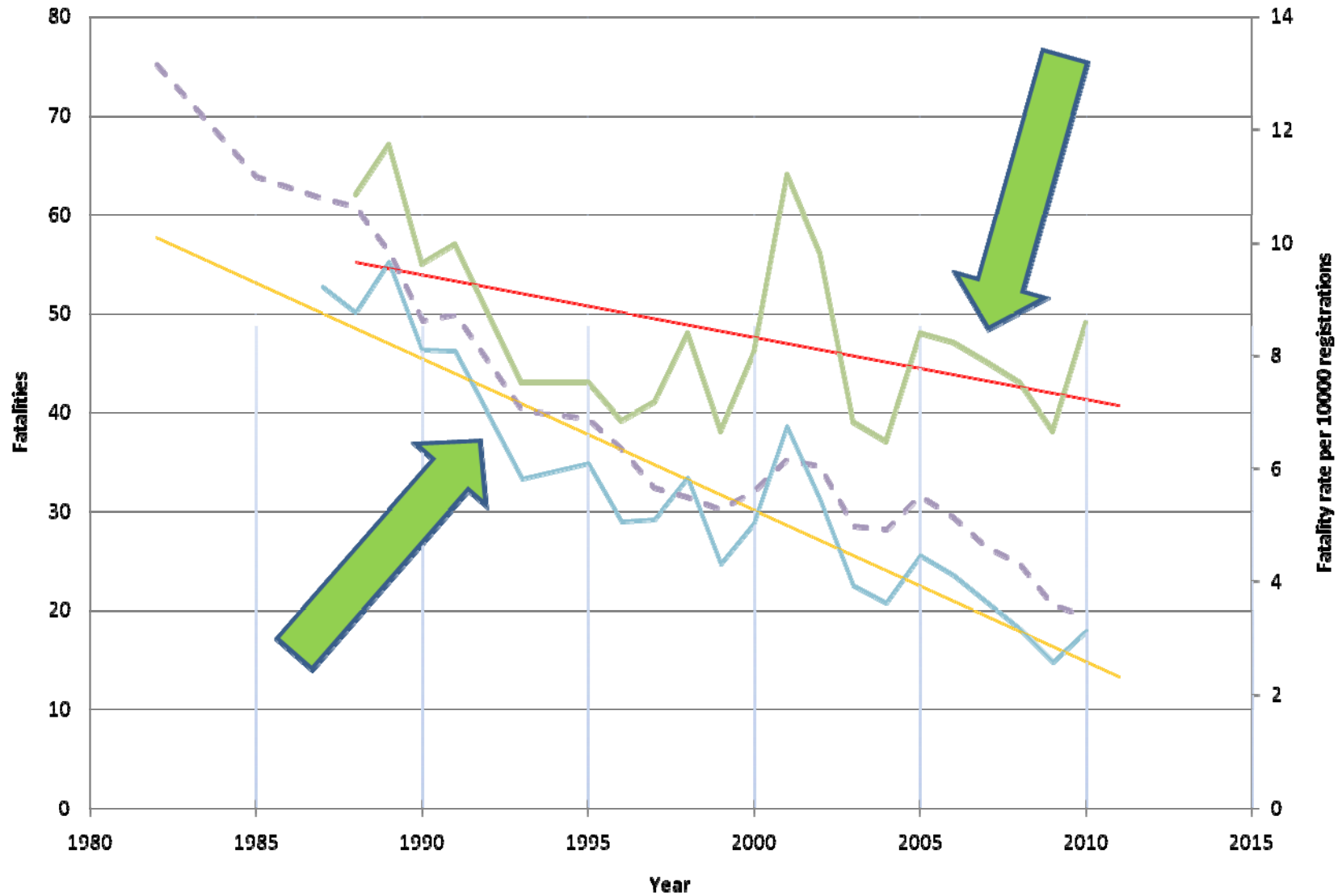
— Victorian Motorcycle Fatalities
 - - - Deaths per 10000 regos Australian
 — Deaths per 10000 regos Victorian
— Linear (Victorian Motorcycle Fatalities)
 — Linear (Deaths per 10000 regos Victorian)

Victorian fatality numbers and rate



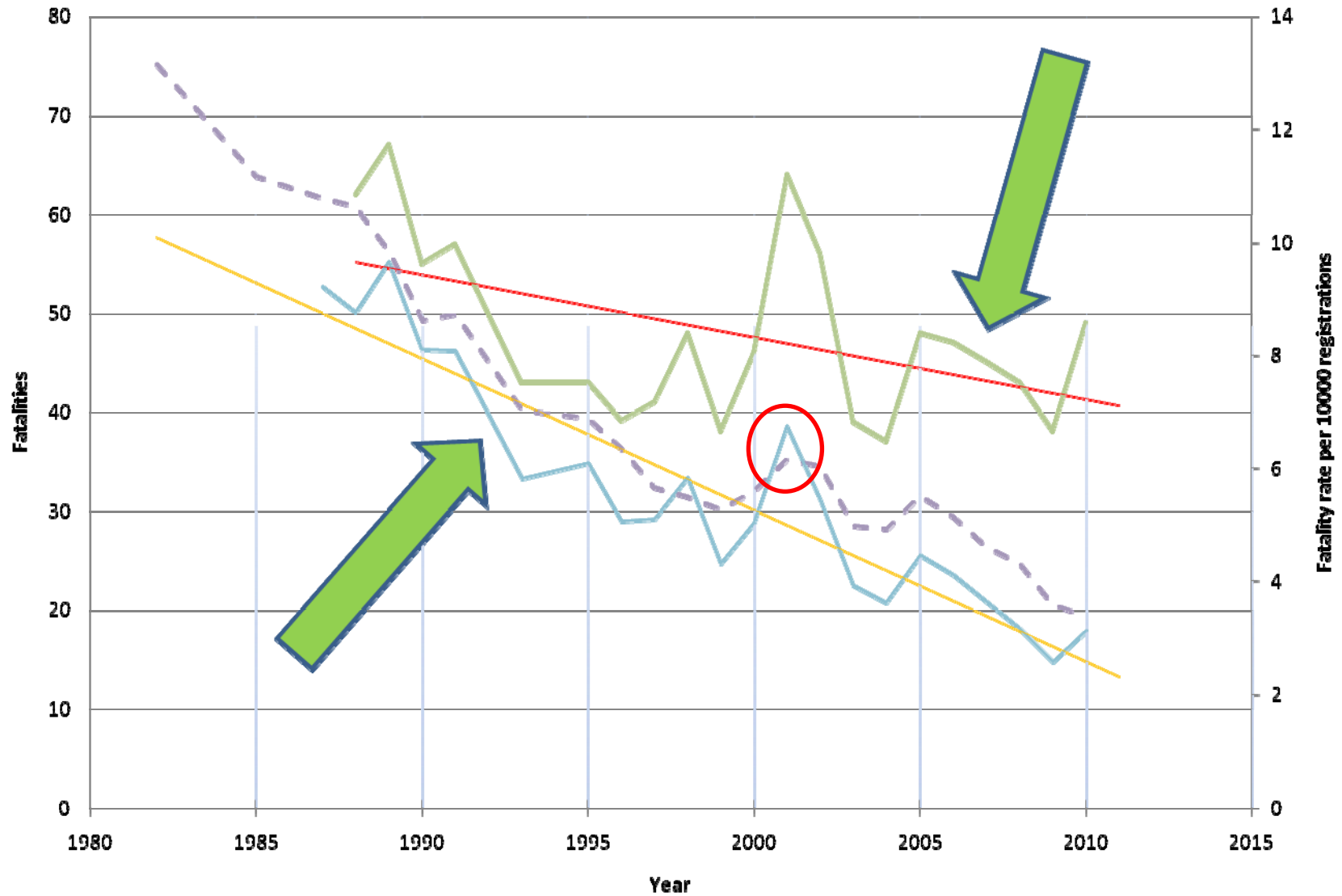
— Victorian Motorcycle Fatalities - - - Deaths per 10000 regos Australian — Deaths per 10000 regos Victorian
— Linear (Victorian Motorcycle Fatalities) — Linear (Deaths per 10000 regos Victorian)

Victorian fatality numbers and rate



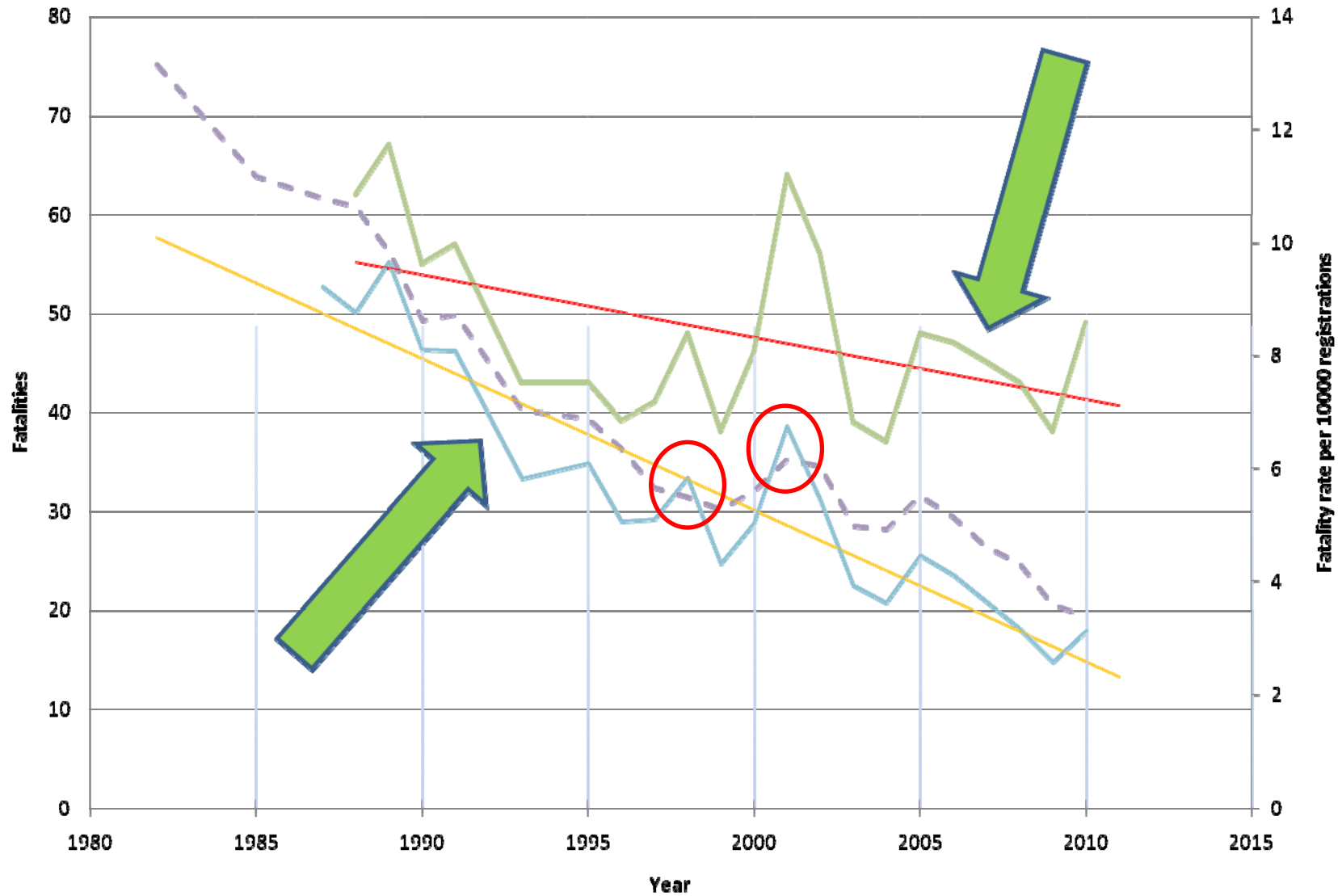
— Victorian Motorcycle Fatalities
 - - - Deaths per 10000 regos Australian
 — Deaths per 10000 regos Victorian
— Linear (Victorian Motorcycle Fatalities)
 — Linear (Deaths per 10000 regos Victorian)

Victorian fatality numbers and rate



— Victorian Motorcycle Fatalities
 - - - Deaths per 10000 regos Australian
 — Deaths per 10000 regos Victorian
— Linear (Victorian Motorcycle Fatalities)
 — Linear (Deaths per 10000 regos Victorian)

Victorian fatality numbers and rate



— Victorian Motorcycle Fatalities
 - - - Deaths per 10000 regos Australian
 — Deaths per 10000 regos Victorian
— Linear (Victorian Motorcycle Fatalities)
 — Linear (Deaths per 10000 regos Victorian)

A large group of motorcyclists is riding on a city street. The riders are wearing various gear, including helmets and jackets. The street is lined with buildings, and the scene is captured from a low angle, looking down the road. A yellow rectangular box is superimposed over the center of the image, containing the text "Victorian Motorcycle Council".

Victorian Motorcycle Council

Motorcycle Safety Inquiry Public Hearing

**Motorcyclists have
38 times the risk of
serious injury.**

spokes TAC
com.au



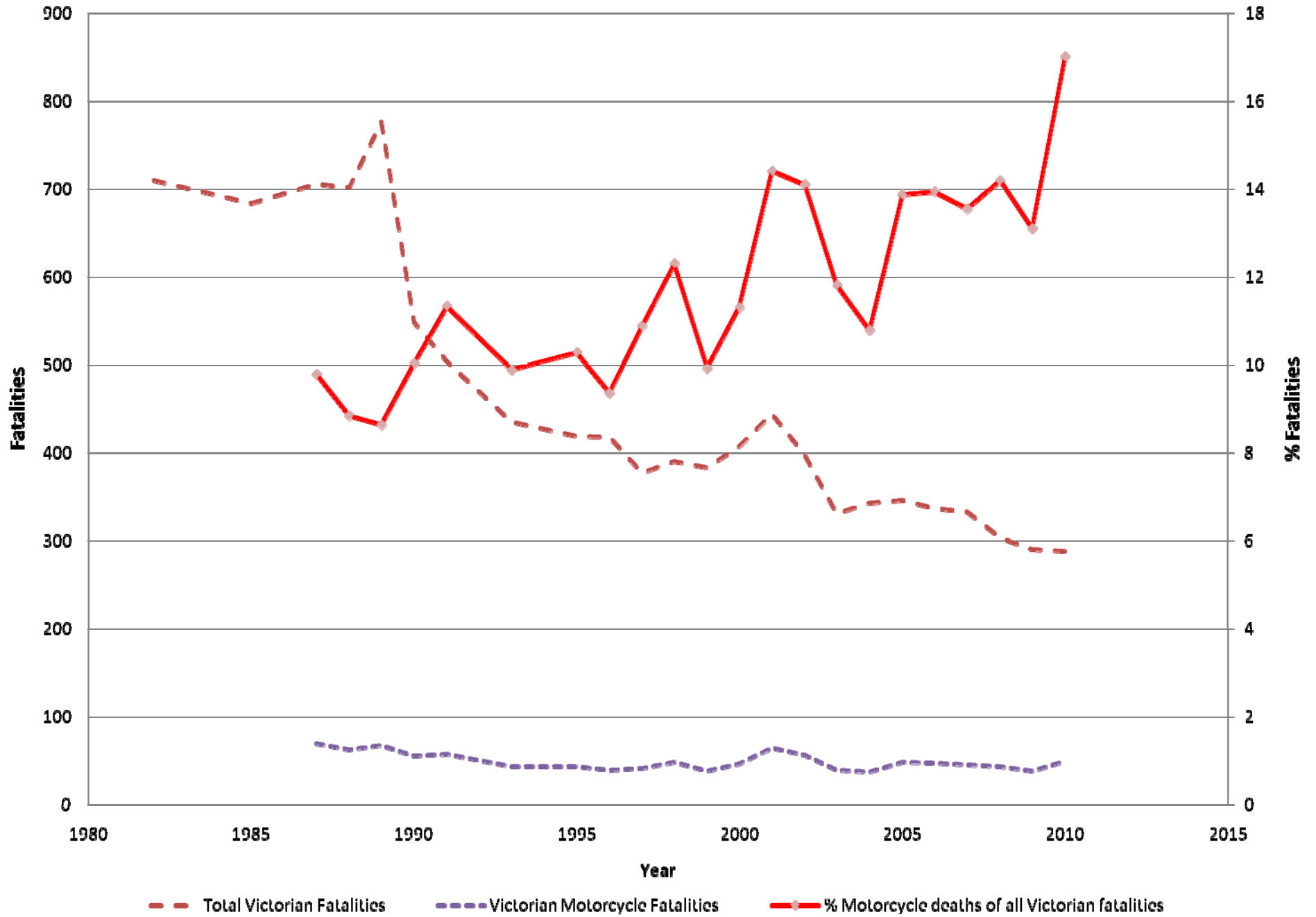
- “The ABS estimates of motor vehicle kilometres travelled are based on information **collected for a sample**, rather than a full enumeration of registered motor vehicles in Australia, **and are therefore subject to sampling error**. Thus, the serious injury rate estimates presented in Table 3.6 may differ from the estimates that would be produced if the denominator included a full enumeration.” – AIHW, Serious injury due to land transport accidents 2005-6, pg 19.
- “Estimate for the denominator (number of kilometres travelled) has a **relative standard error of 10% to less than 25% and should be used with caution**.” - AIHW, Serious injury due to land transport accidents 2005-6, pg 21.
- “- estimate has a **relative standard error of 25% to 50% and should be used with caution**.” – ABS Cat 9208.0 CHANGES TO THE SURVEY OF MOTOR VEHICLE USE 2010

A large group of motorcyclists is riding down a city street. The riders are wearing various gear, including helmets and jackets. The street is lined with buildings, and the scene is captured from a low angle, looking down the road. A yellow rectangular box is superimposed over the middle of the image, containing the text "Victorian Motorcycle Council".

Victorian Motorcycle Council

Motorcycle Safety Inquiry Public Hearing

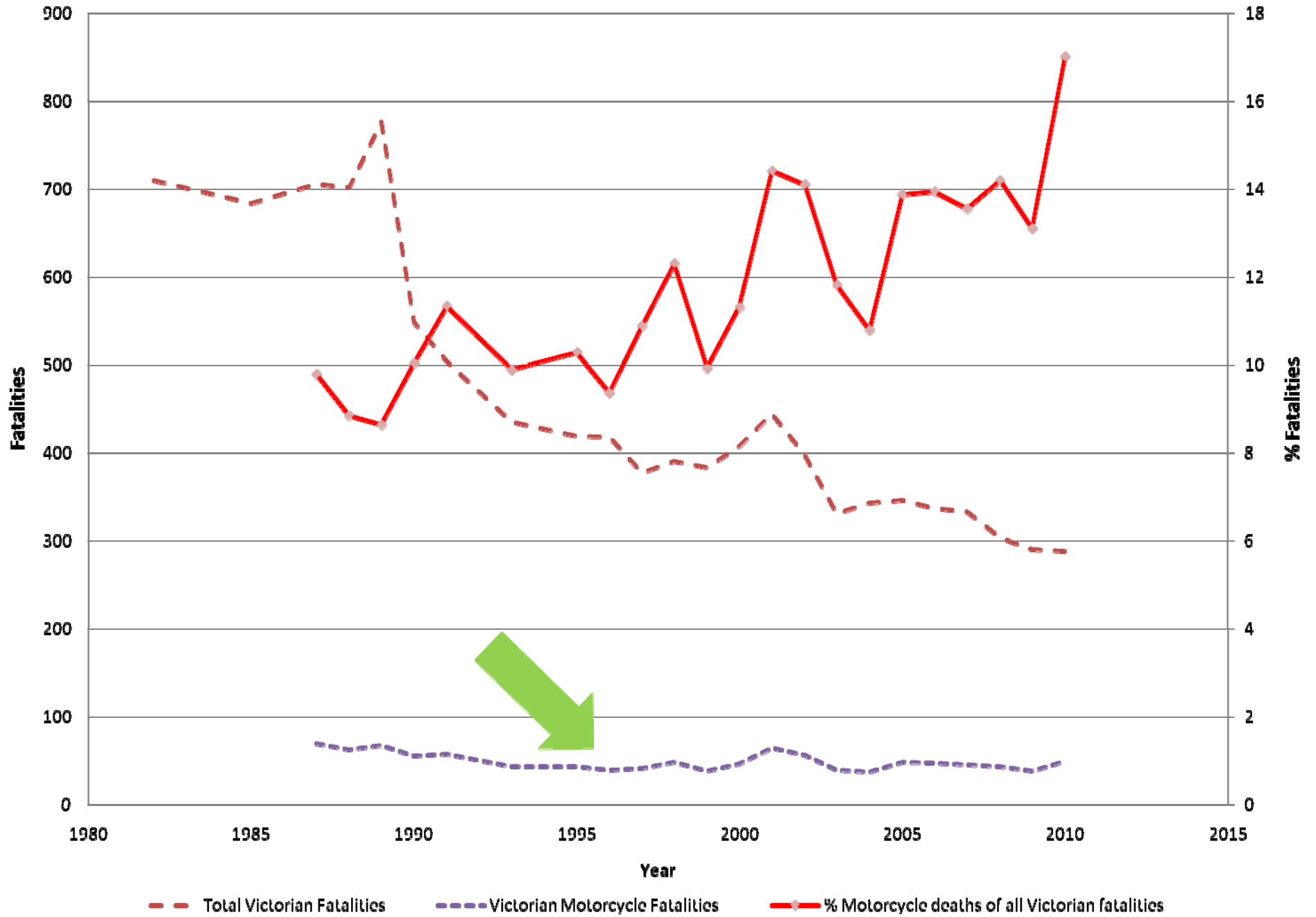
% Motorcycle Fatalities



% Motorcycle Fatalities



% Motorcycle Fatalities



% Motorcycle Fatalities



% Motorcycle Fatalities



A large group of motorcyclists is riding down a city street. The riders are wearing various gear, including helmets and jackets. The street is lined with buildings, and the scene is captured from a low angle, looking down the road. A yellow rectangular box is superimposed over the middle of the image, containing the text "Victorian Motorcycle Council".

Victorian Motorcycle Council

Motorcycle Safety Inquiry Public Hearing

SMIDSY



“SORRY MATE I DIDN'T SEE YOU”

ENOUGH IS ENOUGH



Photo Credit: The Age – Eastern Freeway Melbourne.

A large group of motorcyclists is riding down a city street. The riders are wearing various gear, including helmets and jackets. The street is lined with buildings, and the scene is captured from a low angle, looking down the road. A yellow rectangular box is superimposed over the middle of the image, containing the text "Victorian Motorcycle Council".

Victorian Motorcycle Council

Motorcycle Safety Inquiry Public Hearing

A large group of motorcyclists is riding down a city street. They are wearing helmets and some are wearing high-visibility vests. The street is lined with modern buildings. The text "Victorian Motorcycle Council" is overlaid on the image in a yellow box.

Victorian Motorcycle Council

Motorcycle Safety Inquiry Public Hearing

Thank you