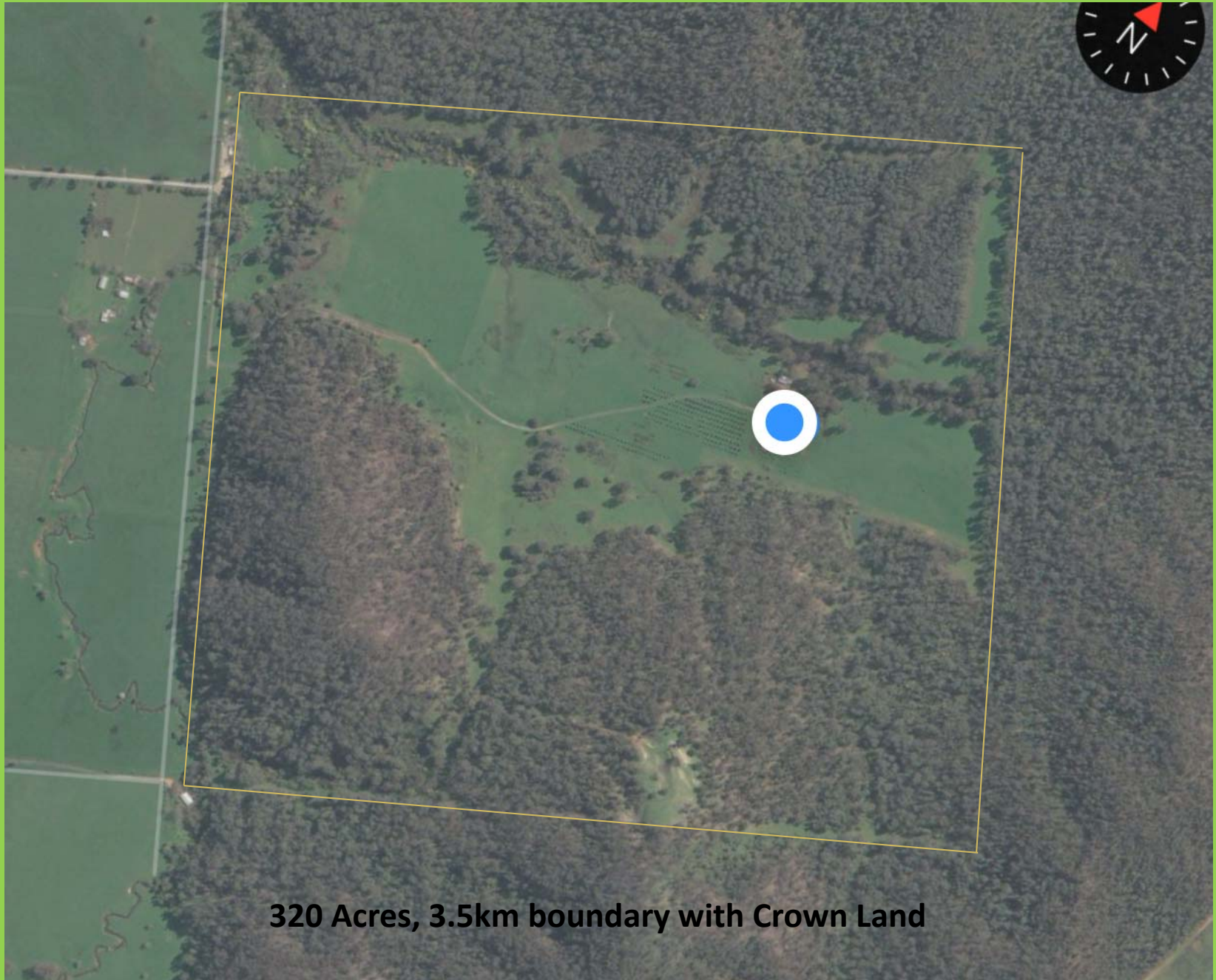


Invasive Animals on Crown Land and Adjoining Properties

Economic and Social Impacts

James Findlay

22Oct 216



320 Acres, 3.5km boundary with Crown Land



Mobs of up to 20 Sambar Deer not uncommon



Deer highway on the inside of a boundary fence! No stock in this paddock for 6 weeks.

My assumptions



=



Adult Deer weighs 180kg – 240 kg
= 5.5 – 8 Dry Sheep Equivalent (DSE)
1st cross ewe with a lamb = 2.5 – 3 DSE
1 Deer = 2 to 2.5 ewes with a lamb.

1 ewe returns me \$156

Therefore 1 deer costs me \$312 - \$390

Any where from 20 – 50 + deer come and go on my property

Potential Economic Loss \$6000 - \$19,000

**Improving 1ha of pasture costs me \$775.
Failure of a 4ha paddock due to deer, is a loss of \$3,100**





Deer wallow in water waterway. This deer was shot in the wallow six weeks ago and left.



3 vehicles written off locally this year from hitting Sambar

336 Deer shot by 8 landowners
520 by 3 local hound hunting teams

75 to 100 tonne of deer meat wasted.



Spotlighting is the most effective and humane method for farmers to cull deer.

Key Recommendations

- Spotlighting is an effective and humane method in culling deer.
- Deer have become a Pest to landowners, they are troublesome, destructive and cost us economically. List them as a Pest Species to landowners, maintain hunting regulations on public land.
- Investigate options for the legal processing of wild deer meat.
- Continue research and studies into the management and impacts of deer.
- Investigate biological controls to reduce deer numbers.
- Assist landowners with research into exclusion fencing and subsidies towards them.
- Biosecurity? Develop a management plan in the event of an infectious disease outbreak in the deer population. How might this effect the agricultural industry?

Deer, like fox's, are here to stay.

We need coordinated programs to manage and reduce their impact on both private and public land.