

Victorian Budget 2014 | 15

Public Accounts and Estimates Committee
2014-15 Budget Estimates Hearing



The Hon. Gordon Rich-Phillips MLC
Assistant Treasurer

Friday 23 May, 2014

Core responsibilities – Assistant Treasurer

- Workplace Accident Compensation and Rehabilitation;
- Occupational Health and Safety;
- Transport Accident Compensation and Rehabilitation;
- Government's motor vehicle fleet;
- Victorian Government Purchasing Board;
- Acquisition, reuse or disposal of Victorian Government land and property;
- WoVG accommodation planning and policies;
- Superannuation policy for the State;
- Regulation of Victoria's registered housing agencies; and
- WoVG DataVic Access Policy and Intellectual Property Policy

Core responsibilities – Assistant Treasurer

Department of Treasury and Finance outputs:

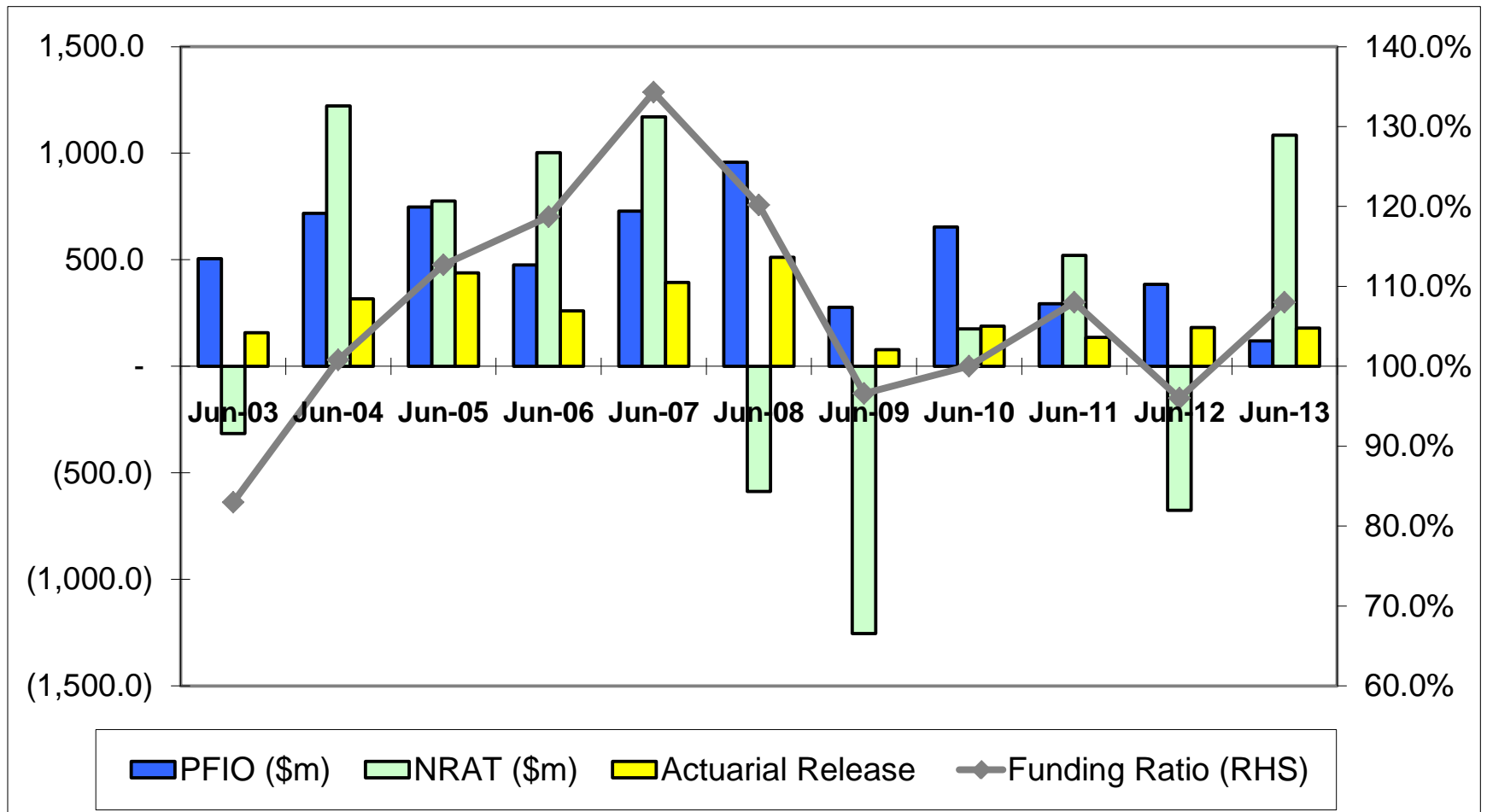
- Budget and Financial Policy Advice
- Economic and Financial Policy
- GBE Performance Monitoring and Financial Risk Management
- Resource Management Services to Government
- Land and Infrastructure Investment Management

Statutory Authorities:

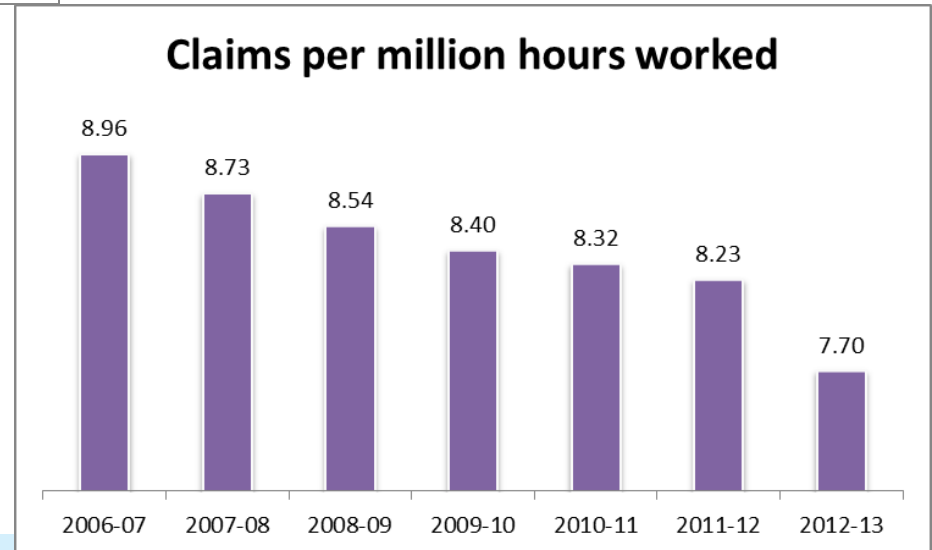
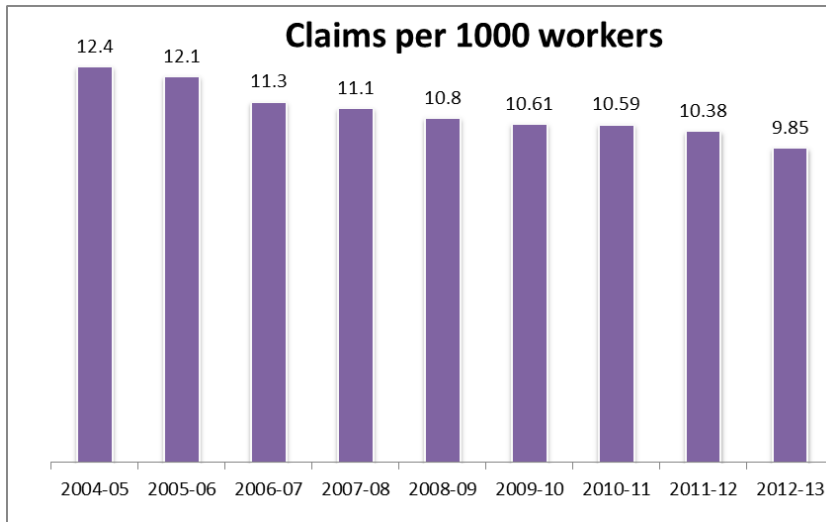
- Victorian WorkCover Authority (VWA)
- Transport Accident Commission (TAC)
- Emergency Services Superannuation Scheme (ESSS)

Victorian WorkCover Authority

Financial Performance

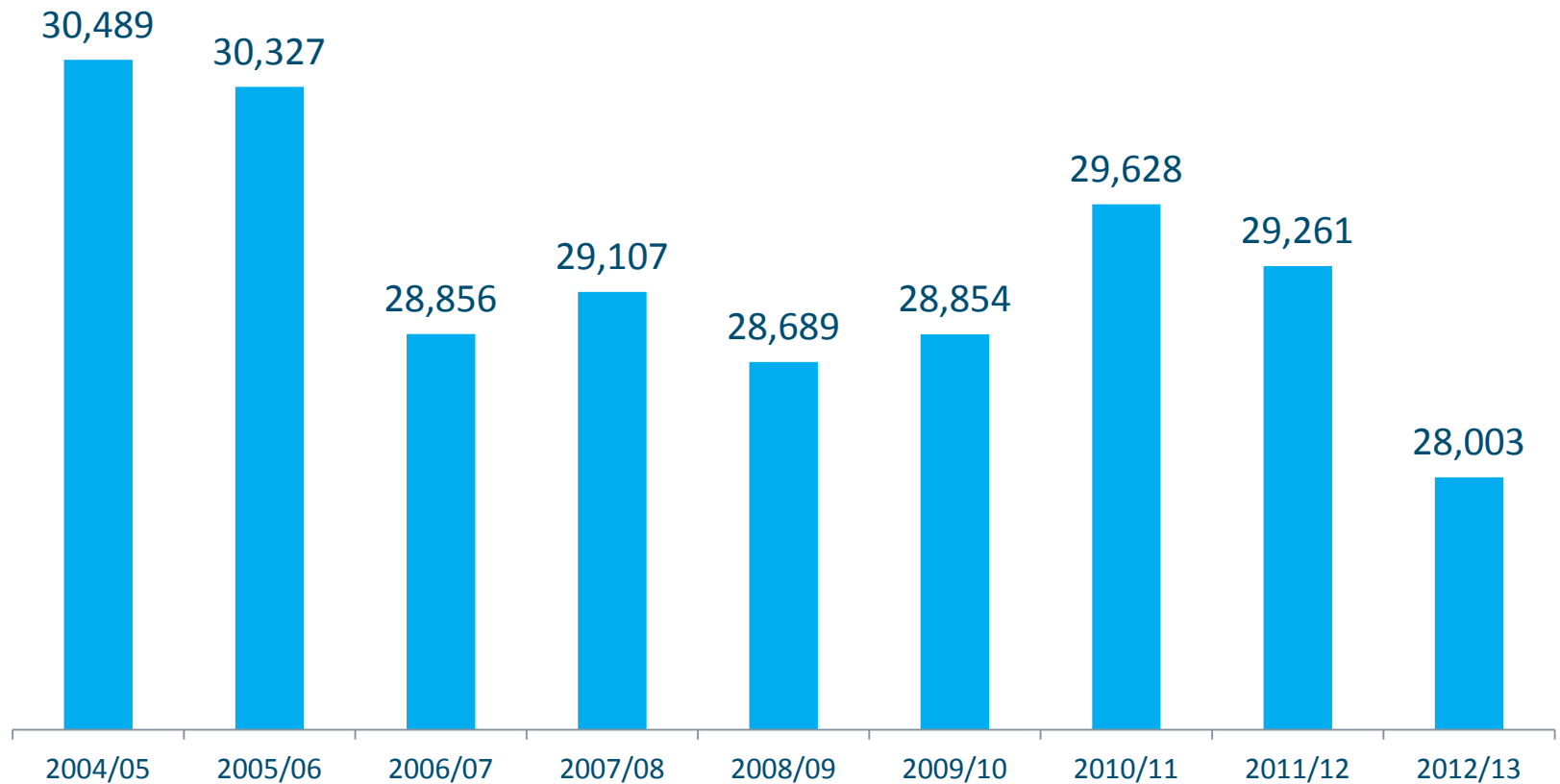


OHS Performance



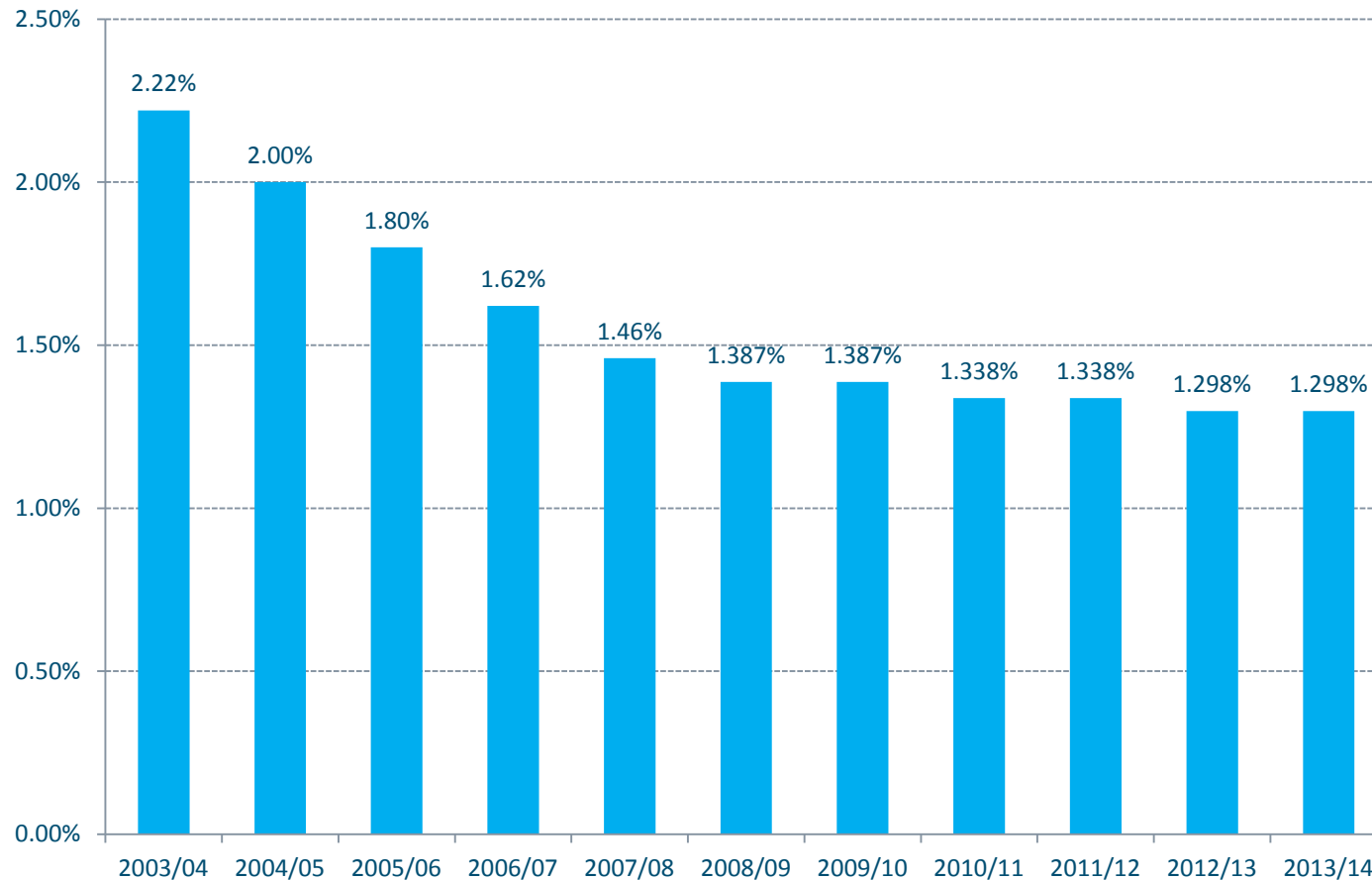
Victorian WorkCover Authority

OHS Performance - reported claims



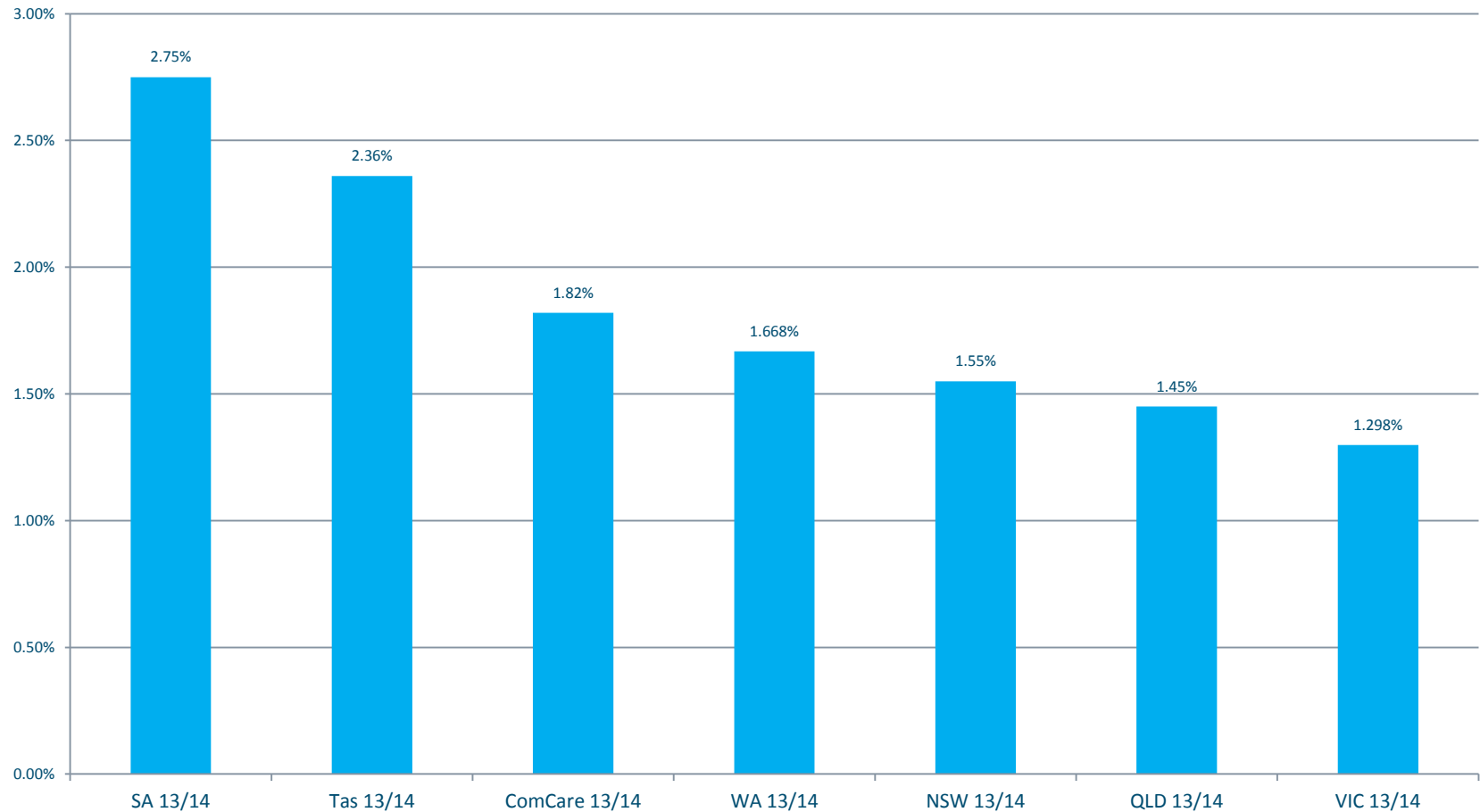
Victorian WorkCover Authority

VWA Premium Rates Over the Last Decade



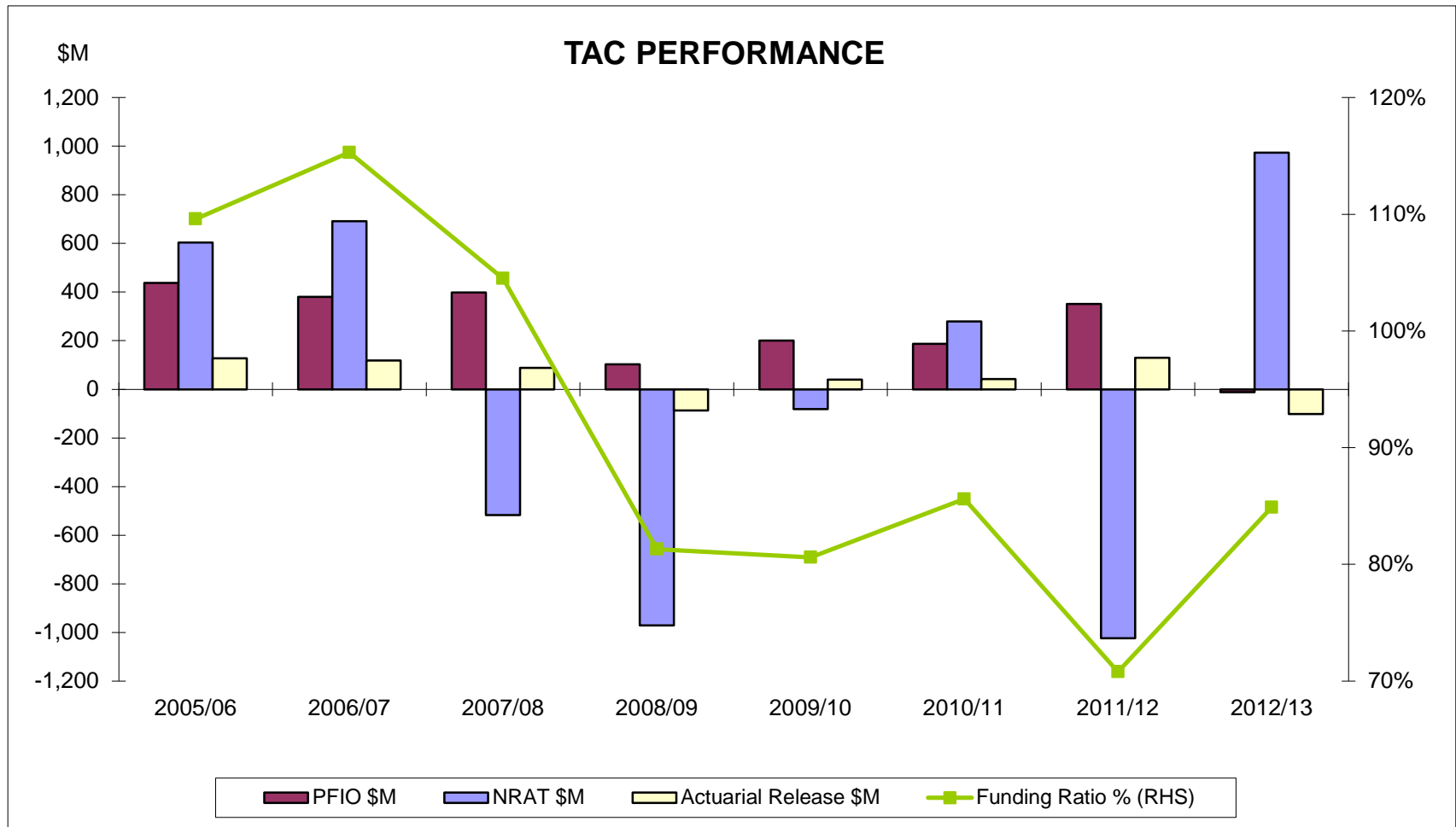
Victorian WorkCover Authority

Comparison of average Australian Premium Rates



Transport Accident Commission

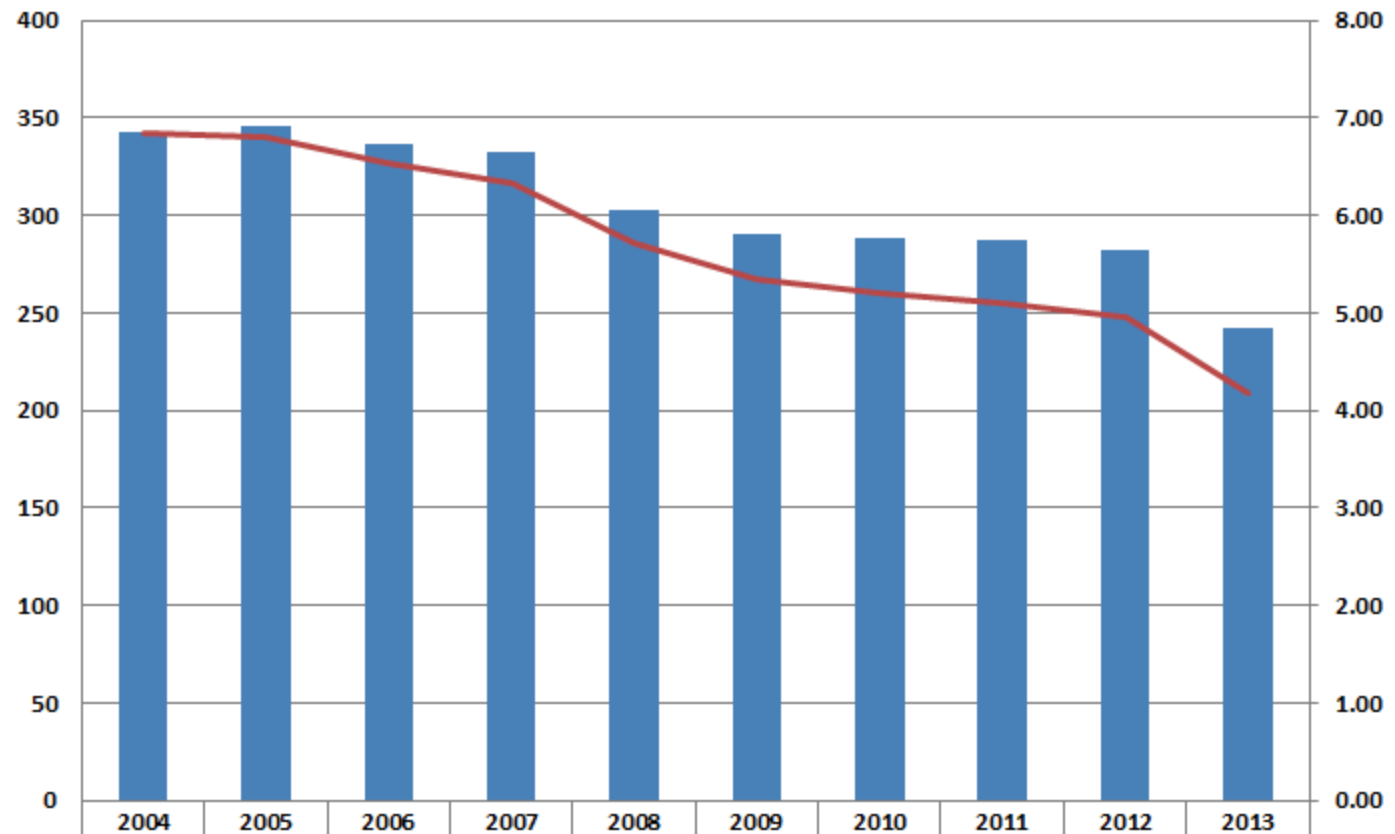
Financial Performance



Transport Accident Commission

The Victorian Road Toll

Victorian Road Toll - Frequency and rate per 100,000 population



Deaths	343	346	337	332	303	290	288	287	282	242
Deaths per 100k ppl	6.84	6.80	6.53	6.33	5.72	5.34	5.20	5.10	4.96	4.18

Transport Accident Commission

Enhanced Crash Investigation Study



Emergency Services and State Super

Financial Performance as at 30 June 2013

	Year to 30 June 2012	Year to 30 June 2013
Total Net Assets	\$16 774 million	\$19 087 million
Members' accrued benefits	\$33 002 million	\$33 987 million
Funding Ratio ES DB	100 per cent	108 per cent
Funding Ratio SSF	36.2 per cent	39.4 per cent
Investment Returns ES DB	3.0 per cent	14.5 per cent
Investment Returns SSF	1.9 per cent	15.8 per cent

VicFleet

- Realised benefits
- Cost of fleet
- Fleet safety

Procurement

- WoVG contracts
- The Victorian Government Purchasing Board

Strategic Sourcing Contract Reviews

(BP3 Measure: *Evaluation and decision on existing or potential whole of Victorian government contracts within agreed timelines*)

2013-14	2014-15
<p>Q1 – Staffing Services OA* – (July 2013) Probity OA – (Sep 2013)</p> <p>Q2 – Fleet Disposal OA – (Nov 2013) Print OA – (Nov 2013) Stationery OA – (Aug 2013) Electricity <160kWh – Extension</p> <p>Q3 – Post - New Contract – (Jan 2014) Financial Advisory Services OA – (Feb 2014) Fuel OA - (Feb 2014) Gas OA - (Feb 2014) Tax OA - (Feb 2014) Document Exchange BC^ – (Mar 2014)</p> <p>Q4 – Real Estate Facilities Management - New Contract – (Apr 2014) Elec >160 kWh OA – (to be completed Jun 2014)</p>	<p>Q1 – Financial Advisory Services (Jul) Fuel (Jul) Print Management Services (Jul) Cash & Banking (Sep) Security Services (Sep)</p> <p>Q2 – Novated Leasing (Oct) Postal Services (Dec)</p> <p>Q3 – Natural Gas (Jan) Motor Vehicles Supply (Jan)</p> <p>Q4 – Probity services (Apr)</p>

OA*: Opportunity Assessment, is preliminary analysis of options used to inform a future procurement strategy.

BC^: Business Case, comprises a detailed analysis of options, including a risk assessment and cost / benefit justification, from which a strategy / plan is recommended.

Accommodation

- Portfolio size
- Workplace density
- Vacancy rates
- Cost

Other/Departmental

- Superannuation
- Land & Property
- Better Financial Management Policy
- Housing Registrar

Other/Departmental

- DataVic Access Policy
- Intellectual property (IP) policy
- National Disability Insurance Scheme