



School reunion fun

P. 15

# portland observer

Phone (03) 5522 3000

AND GUARDIAN



Touch that!

P. 36

www.spec.com.au

FRIDAY, SEPTEMBER 18, 2015

\$1.70 inc GST

## Helping out builds strong relationships

LIAM O'CALLAGHAN

VOLUNTEERS from Incitec Pivot worked alongside Kyeema participants on Tuesday to help improve the gardens and surrounds of the Kyeema facility.

During the day the Kyeema participants and the 10 volunteers improved the gardens of the centre which included general maintenance and beautifying garden beds.

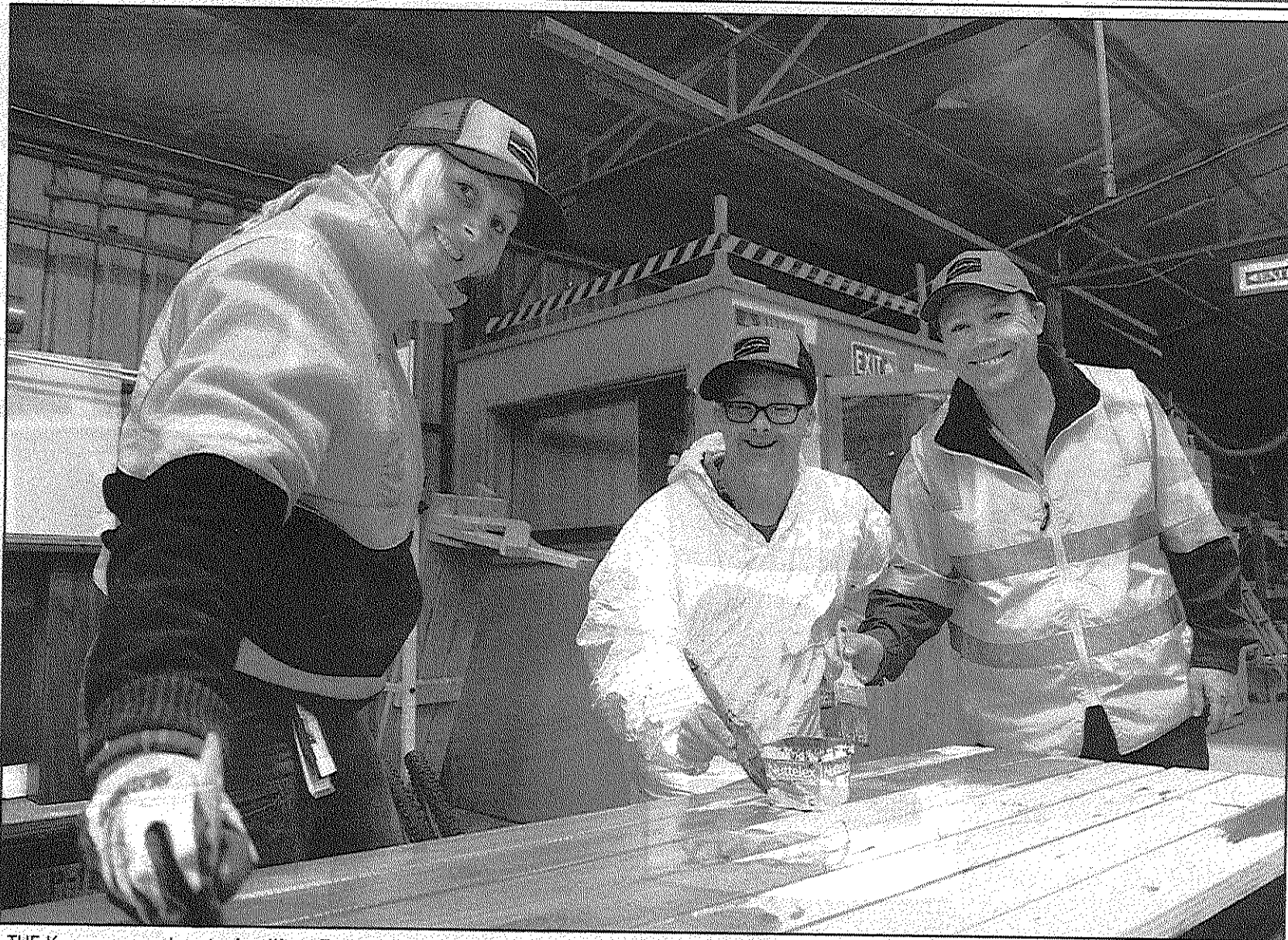
Incitec Pivot Portland operations manager Barry Knight said the group also painted the outdoor furniture and resurfaced the carport.

"As well as helping Kyeema out, this project will also double as a great team building activity for our employee volunteers."

The project was organised by Karingal BacLinks, a service that brokers relationships between businesses and community groups and one that Incitec Pivot and its employees are glad to be involved with.

"We believe that participating in volunteering events such as this has the ability to make a real and valued difference to our local communities," Mr Knight said.

"It also helps our employees understand the challenges of communities in which they live and work."



THE Kyeema grounds got a facelift on Tuesday when 10 volunteers from Incitec Pivot worked on maintenance with Kyeema participants. Incitec Pivot's Abby Hampson (left) and Barry Knight (right) helped Kyeema's David Goebel lacquer some donated tables.

Picture: ELLY HATELEY 150915eh01

# Roads to ruin

## Fear highways will collapse under increasing traffic

BILL MELDRUM

THE Glenelg Shire Council fears major roads leading to the Port of Portland will collapse in the next 10 years because of blue gum plantation harvesting.

Shire mayor Robert Halliday said the time was fast approaching when the cost of repairing a road was more than its construction.

"We have been pushing this issue hard to the six State Government ministers, including Premier Daniel Andrews, who have visited Portland since the new government was elected," he said.

"We show them the growing woodchip piles, log stacks at the port, along with the numbers of trucks coming into the port - both woodchip and mineral sands - so they see it first hand ... then we tell them what the predicted tonnages are in future years."

Cr Halliday said the council was constantly receiving requests and

representations from trucking companies about the roads.

"They want to see the roads fixed because their maintenance bills are rapidly increasing," he said.

Cr Halliday said a meeting of mayors and some councillors from the Glenelg, Southern Grampians, and several south-east South Australian councils at Coonawarra on Wednesday night agreed to "rejuvenate" the Green Triangle Region Freight Action Plan.

Cr Halliday said the South Australian councils were extremely concerned about the condition of roads because it was impacting on produce from their area such as timber and dairy into south-west Victoria.

The freight action plan was released in 2009 with input from the Victorian and South Australian governments, councils, the timber and freight industries, and the Port of Portland.

It recommended a raft of road and rail upgrades, along with cross-border

regulatory reforms for the trucking industry.

Glenelg Shire economic development and tourism manager Neil Burgess told Timber Towns Victoria representatives in Portland recently that all four transport corridors in the shire - the Portland-Nelson Rd, the Henty Hwy from Condah to Heywood, and the Princes Hwy from Dartmoor to Heywood, and Heywood to Portland - were expected to each carry more than 15 million tonnes of timber products in the 10 years to 2024.

Those roads are all the responsibility of the Victorian Government and VicRoads. He referred to the Portland-Nelson Rd, saying between 2009 and 2014 it carried an estimated 4.4 million tonnes.

"The 2015-2019 expectations are between 10 million and 15 million tonnes," he said.

"There is potential for a 550 per cent increase (in tonnages) over the next 10 years from the 2009-2014 levels.

"It is a question of when, not if, the road

fails," he said.

Mr Burgess said if the Portland Nelson Rd did fail, the traffic would have to be directed along the Princes Hwy which was already struggling and breaking up under the current loads.

A VicRoads spokesperson said yesterday it had delivered a number of road improvement projects identified in the freight action plan.

"We are continuing to deliver improvements including 14.4 kilometres on the Portland-Nelson Road, 1.5km of the Princes Highway west of Heywood and approximately two kilometres of pavement reconstruction on the highway at Mumbanna," the spokesperson said.

The spokesperson said that at last week's Timber Towns tour, VicRoads gained a valuable insight into the challenges facing the timber industry, the Port of Portland and in particular, the increase in the scale of the freight task and the need to address the condition of the roads which are most affected.

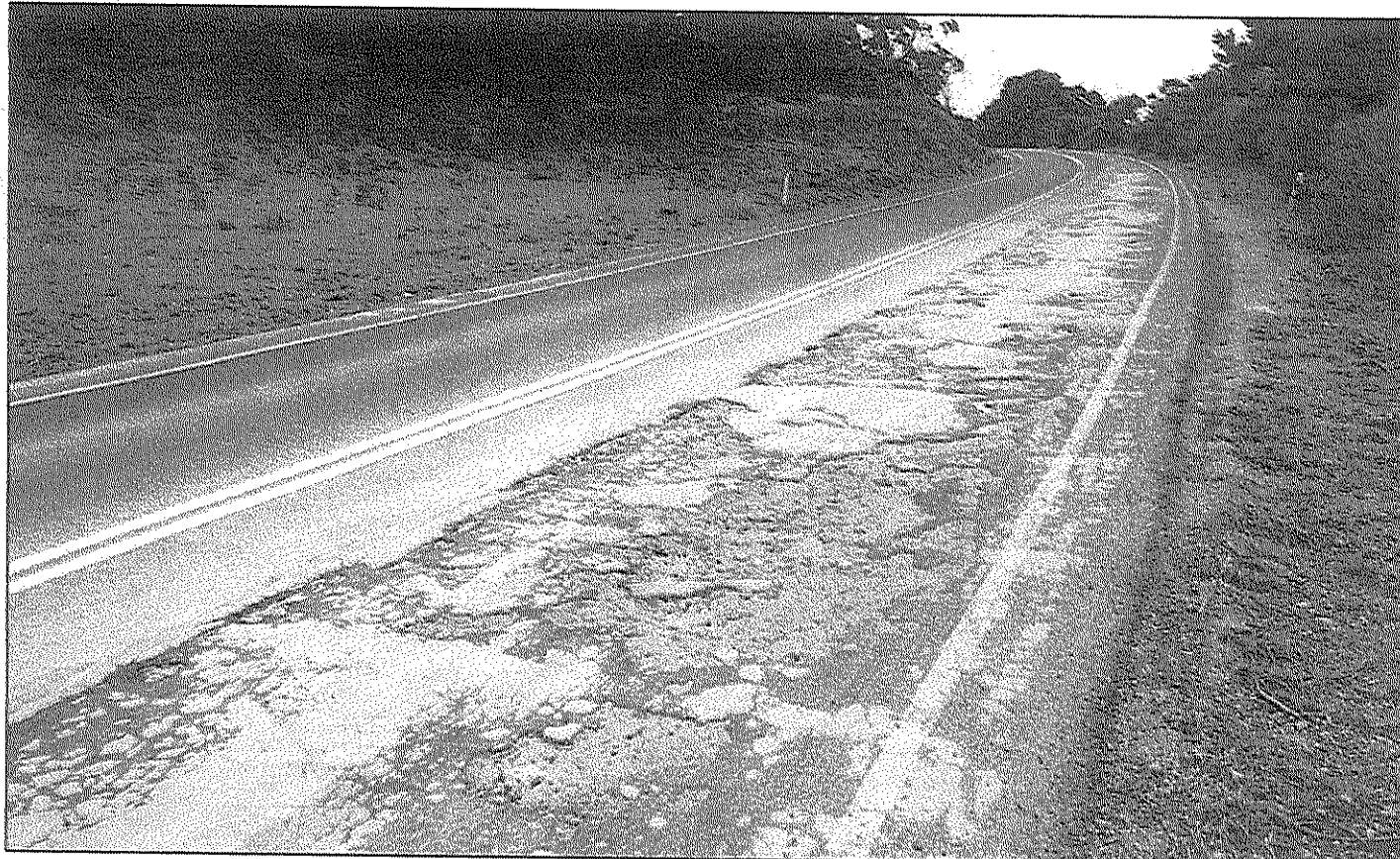
## By-election set for October 31

ON a weekend when Portland residents are in Upwelling Festival, 3 Bays Marathon and Melbourne Cup festivities mode, the Victorian Electoral Commission has made a surprise intrusion.

It was announced yesterday the South West Coast by-election will be held on Saturday, October 31.

Portland's central business district and foreshore is usually packed as people flock to the many attractions offered at the Upwelling Festival; the Portland Civic Hall attracts a steady stream of people for the Rotary Art Show; the serious and not so serious pavement sloggers are making last minute preparations for the marathon, and then there will be those residents who look at the opportunity to have a four-day long weekend in distant areas.

Voters must be on the roll by 8pm on September 24 and candidates have to nominate by noon on October 2.



WET weather has contributed to the road surface breaking up.

Picture: PETER CORBETT

## Truck jack-knives after driver blacks out

A B-DOUBLE has veered off the road into an embankment near Lyons on Sunday night after the driver suffered from a medical condition that caused him to blackout.

It is believed that single male driver of the truck was travelling along the Princess Highway about 21km North West of Heywood at approximately 10.30pm when the incident occurred and he lost consciousness.

According to acting Sergeant Mick Aitken of Heywood police this caused the truck to leave the road and jack-knife as it came to a stop at an embankment fortunately leaving the man relatively unscathed.

"He was treated by ambulance paramedics at the scene and they took him to Portland hospital where he was kept for observation but has since been discharged."

The truck was removed and the highway was reopened by 1am Monday morning.

## Trivia fit for a queen

From PAGE 1

"I'm excited. There will be challenges on horsemanship and presentation, and they also look at how well we did with our fundraising, before announcing the winner," she added.

The winner of the final will be crowned the Australian Rodeo Queen, and will represent Australia in the world competition in the US and Canada.

# Major roads reduced to 60km/h

TIANA RICHARDSON

SECTIONS of the Portland-Nelson Road have been dropped to 60km/h due to the deteriorating surface.

On Saturday, Portland's Peter and Karen Corbett were travelling back from Mt Gambier, and noticed how poor the road was so Mr Corbett took a number of photos of the road.

Mr Corbett shared the photos on Facebook with the photos going viral and being shared more than 580 times, with plenty of people horrified by the state of the road.

VicRoads south west regional director Mark Koliba said VicRoads is aware of the deteriorating condition of a 3.5km stretch of the Portland-Nelson Rd about 35km from Portland.

"VicRoads today reduced the speed limit on this section of road from 100km/h to 60km/h. The speed will be reinstated when the condition of the road can be improved," Mr Koliba said.

"Persistent wet weather and the vast increase in the number and weight of trucks will continue to impact on the ageing road and further weaken the surface.

"This section of road was originally constructed using local materials, which were never intended to carry the amount of traffic now using the road.

"Monitoring and regular repairs on the road will continue until a long-term solution can be completed," he said.

Mr Koliba said several key roads in the Portland area have been earmarked for resurfacing works. These include 14.4 kilometres on the Portland-Nelson Road, 1.5 kilometres

of the Princes Highway west of Heywood and about 2km of pavement reconstruction will be completed on the Princes Highway at Mumbannar.

After recent social media exposure to deteriorating roads around the Glenelg Shire, the council released a statement in regards to responsibility for different roads.

All roads within Glenelg Shire are designated as either arterial roads or municipal roads. Arterial roads are managed by VicRoads, which is also responsible for their maintenance. Glenelg Shire maintains municipal roads (also known as "local roads").

Residents may see Glenelg Shire Council staff working on major arterial roads from time to time as VicRoads contracts the Glenelg Shire to perform maintenance.

There are five key arterial (VicRoads-owned) roads in Glenelg Shire:

- The Portland-Hamilton Road, otherwise known as the Henty Highway;
- The Portland-Casterton Road;
- Portland-Warrnambool Road;
- The Portland-Nelson Road; and,
- The Princes Highway between Tyrendarra and the South Australian border.

Glenelg Shire Council chief executive officer Greg Burgoyne said it was understandable that some in the community mistakenly believed the council was responsible for all roads in the shire.

Mr Burgoyne said compounding the confusion was the fact VicRoads regularly contracted Glenelg Shire to conduct maintenance work on arterial roads.

"The council understands the confusion caused when the public sees a council work crew working on an arterial road, but residents can be assured council is being paid by VicRoads to carry out this work," he said.

Mr Burgoyne said arterial roads within the Glenelg Shire were coming under increasing pressure through heavy vehicle use which would only increase as the timber industry expanded.

"Some of the road network is more than 50-years-old and requires rebuilding, not minor maintenance," Mr Burgoyne said.

Mr Burgoyne said investment in the road network was needed to help support industry and, in turn, create jobs within Glenelg Shire.

"We have ongoing issues with heavy vehicles using our arterial roads but the community can be assured council is not ignoring the problem," Mr Burgoyne said.

"The council advocates to VicRoads and the State Government on a regular basis to ensure these bodies invest more money in our roads. With an old road network and growing demand, we know advocacy for more funds in this area is incredibly important and we will continue to strongly lobby for more roads funding."

Road users can call 13 11 70 to report road hazards.



SECTIONS of the Portland-Nelson Rd have been reduced to 60km/h due to the deterioration of the surface.

Picture: PETER CORBETT

**BOB McPHERSON PLUMBING**  
5523 4779

**AMOR'S PLUMBING**

- Gas Installations
- Hot Water Systems
- Wood Heaters • Roofing & Guttering • General Plumbing
- Servicing Heaters & Carbon Monoxide Testing

**Greg Amor** Lic No 22689  
PORTLAND & SURROUNDING DISTRICTS  
5523 5539 - 0427 504 974  
Email: gjamor@hotmail.net.au www.hipages.com.au

**PORTLAND HOME IMPROVEMENTS**

- Kitchens • Bathrooms • Wardrobes • Windows

**Quality custom made furniture & joinery**

Showroom 40 Barkly Street 5523 3066  
portlandhome@bigpond.com  
www.portlandhomeimprovements.com.au

**National Accredited Tickets**

**On Site Training**

**Travel Anywhere**

- Backhoe Operation
- Excavator Operation
- Grader Operation
- Loader Operation
- Skid Steer Operation
- Haul Truck Artic Operation
- Haul Truck Rigid Operation
- IT Carrier Operation
- Roller Operation
- Compactor Roller Operation
- Dazer Operation
- Scrapper Operation
- Bulk Water Cart Operation
- Load & Unload Mobile Plant

**South VIC Training & Assessing**  
Phone Jeff 0456 560 651 Portland Based  
Email - jeffreyginn78@gmail.com

National Provider Code No 51925  
ABN 13419862695

# Opposition checks out local roads

LIAM O'CALLAGHAN

STATE OPPOSITION spokesman on roads Ryan Smith joined Member for South West Coast Denis Napthine on Tuesday for a tour of some of the district roads to identify areas requiring improvement.

The tour included visit to works on Condah-Hotspur Road, the Port of Portland to discuss impact and needs of the trucking industry as well as visiting various hotspots in need of repair.

After his tour Mr Smith said it was clear continued upgrades to the region's roads was essential, especially considering the state of roads such as the Myamun-MacArthur Roach which he labelled "one of the worst road I have seen in Victoria".

"We want to make sure that focus was back on country roads and make sure that those freight routes were maintained as much as possible."

Maintaining the roads not only for the use of heavy vehicles but local traffic and commuter traffic was a priority, Mr Smith said.

"We want to make sure that not only are they (the roads) maintained but they are kept safe for trucks to share the roads with cars."

The use of freight routes was an important part of the visit with the Port of Portland detailing to the two politicians the increasing numbers of trucks on the road.

"It is absolutely essential to bring Ryan to the Port of Portland because they



PORT of Portland Operations manager Shannon Curran, Shadow Roads Minister Ryan Smith, Dr Denis Napthine and Port Engineer Mark Kamphius met on Tuesday to discuss road conditions in the south west for the trucking industry.

Picture: ELLY HATELEY 150728eh06

can explain that there as been record numbers put through the port virtually year on year for the last three years," said Dr Napthine.

With those numbers set to grow in the

future further investment in rural roads will be needed and Mr Smith along with Dr Napthine was set on supporting that. "You can't turn your back on the need to invest in local roads in terms of safety

on local roads, in terms of the economic efficiency of the export," he said.

"So you have to meet today needs and plan for the future growth and that's what we are here about today."

## Shire joins regional tourism body

BILL MELDRUM

GLENELG Shire Council has described its membership of the Great Ocean Road Regional Tourism as beneficial.

The council decided on Tuesday night to choose Cr Anita Rank as a board member of the tourism body.

Great Ocean Road Regional Tourism is a marketing body which markets the region from near Geelong to the South Australian border and part of the hinterland.

Cr Rank said it was a good time for the Glenelg Shire to join the Great Ocean Road Regional tourism.

"It will give us the opportunity to share our products across the region, especially given we have cruise ships," she said.

"Also, it will provide a great opportunity for us to capitalise on the council's increased tourism budget this year which will focus on marketing Portland as a destination.

"In the past, we have probably used the word destination in very loose terms when talking about Portland ... we've thrown it around as Portland is a place to come to."

Cr Rank said Portland needed to promote its attractions so visitors will spend two days here visiting our attractions instead of coming here for a few hours.

"Geelong and Warrambool have their act together, this is our chance as well," she said.

Cr Karen Stephens will be the shire's alternate board member.

# Huge pothole on Princes Hwy



INDEPENDENT Riders Association safety committee representative Dale Maggs is continuing his ongoing campaign to highlight hazards on south-west roads. Mr Maggs said he was travelling on the Princes Hwy near Heywood late last week when he noticed one of the more dangerous deep and wide potholes on the highway. The location of this pothole is on the eastbound lane near Danger Lane. He placed one of his workboots in the pothole to give an indication of its size and depth. The association is a lobby group that aims to improve safety for motorcyclists.

Picture: SUPPLIED

Matthews Petroleum is pleased to announce we are ready to open our new service station on the Ring Road, Portland Wednesday 14th August.

The 24/7 unmanned service station welcomes all card based customers (Visa, Mastercard, Caltex Starcard etc) to purchase fuel products at our everyday low prices that have been enjoyed for years from the current Kennedy St Depot.

The new service station is not just a diesel stop it also offers adblue, unleaded and premium unleaded products at an everyday low price

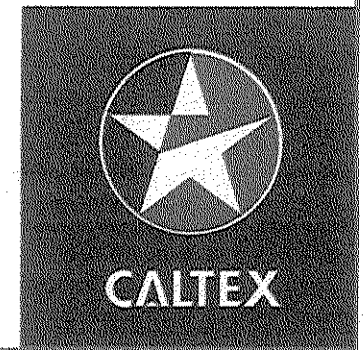
To open there will be some disruption to existing customers:

- Kennedy St Depot closes at 12noon Tuesday 13th Aug
- Ring Road Service Station opens at 9am Wednesday 14th Aug

Unfortunately there will be no diesel facility available while this happens, we trust you will be able to plan around this short delay.

Should you have any questions about the changeover or just want to know how to use the new service station please call our friendly staff at the Matthews Petroleum office

Ph: 5562 8155.



OBH09139327

# Temporary fix for highway potholes

THE latest outbreak of potholes along the Princes and Henty highways is set to be temporarily fixed this week, according to VicRoads.

The holes, near the turnoff to Warrnambool and the approaches to Bolwarra, have left motorists dodging and weaving to avoid front end damage.

VicRoads has blamed the recent extended period of wet and cold weather for the sudden spate of holes in the bitumen.

"Potholes form because roads crack under the weight and volumes of traffic, causing rain to seep through the cracks and into the underlying gravel. Continued traffic then causes the seal to lift, more water seeps through the cracks and the pothole gets larger," VicRoads Regional Director William Tieppo said.

VicRoads and the Glenelg Shire inspected the Princes Highway near Portland earlier this week and have scheduled temporary repairs to be undertaken this week. One of the worst holes had been filled by yesterday morning.

"Over the winter months, maintenance crews temporarily fix potholes on roads such as the Princes Highway by using asphalt, however some repairs require the use of different materials. A more permanent fix will be scheduled during summer when weather conditions are warmer and the road is dry," VicRoads said.

VicRoads said it encourages people to notify the agency of hazardous road conditions, 24 hours a day, on 13 11 70.



THIS pothole on the Henty Highway was causing headaches for motorists on Monday.

Picture: KIRSTY HILL 140811kh06

## Out & about

# \$2million for key timber road

**THE Federal Government has now approved a grant of \$2.5 million to upgrade one of Glenelg Shire's most important timber industry roads.**

Assistant Infrastructure and Regional Development Minister Jamie Briggs signed off on the investment for the Condah-Hotspur Upper Road in August.

Mayor Cr Robert Halliday said Council had been battling for many years to have the dangerous road repaired.

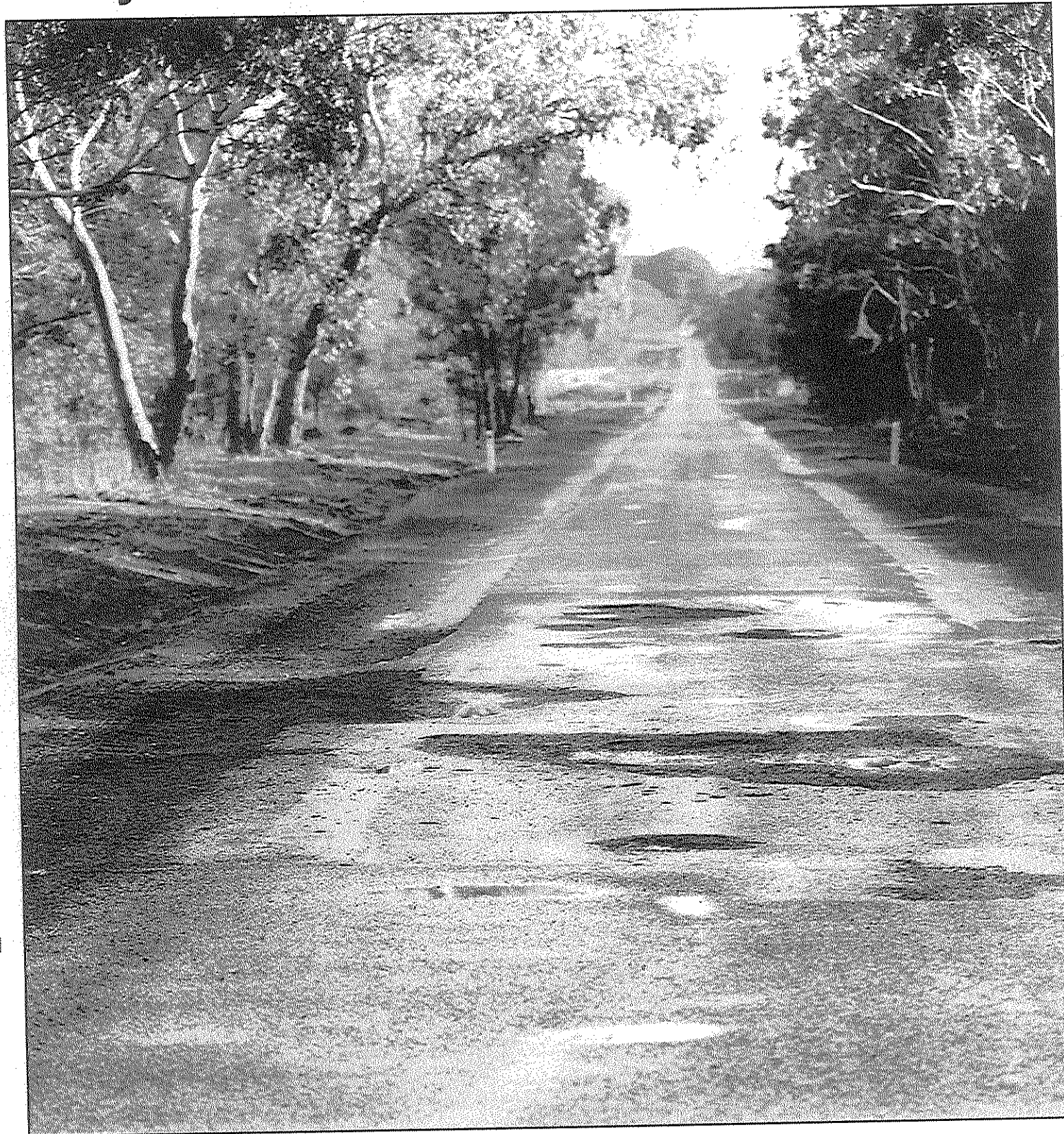
Cr Halliday said the key transport corridor, north of Heywood, had been struggling under the weight of around 24,000 annual truck movements and increasing numbers of school buses.

"This road is a key route for timber trucks transporting timber from the plantations in south west Victoria and into South Australia to the Myamyn Mill and it's just not been able to cope with the traffic pressure," he said.

"It's incredibly dangerous, not only for the truck drivers, but also for the people who live in the region and need to access Condah-Hotspur Upper Road regularly."

The \$2.5 million Federal Coalition funding injection – pledged ahead of the last election – would see more than 14 kilometres of the road widened, strengthened and sealed.

The former Victorian State Government had allocated \$1.063 million to repair the road and Cr Halliday said Glenelg Shire had also invested significant funds.



## Roads on the radar

**WITH local industry growing and more heavy vehicles on our roads, Council is working harder than ever to keep the shire's 3500 kilometres of road in safe, working order.**

Ongoing investment in the road system is vital to help support industries like timber and, in turn, create more local jobs.

Council advocates regularly with VicRoads and the State Government to keep funds flowing for local ageing roads, some of which are more than 50 years old and need rebuilding rather than maintenance.

For residents who are unsure, all roads in the shire are classified as either 'arterial roads' (owned by VicRoads)

or 'municipal roads/local roads' (Council's responsibility).

There are five key arterial roads in Glenelg Shire:

- The Portland-Hamilton Road (otherwise known as the Henty Highway);
- The Portland-Casterton Road;
- Portland-Warrnambool Road;
- The Portland-Nelson Road; and
- The Princes Highway between Tyrendarra and the South Australian border.

Council staff may sometimes be seen working on arterial roads as part of a paid contract to VicRoads.