

Presentation to the Public Accounts and Estimates Committee

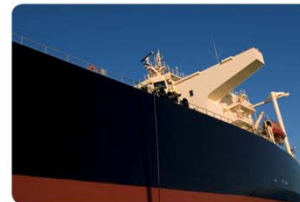
2014-15 Budget

Monday 12 May 2014

David Hodgett MP
Minister for Ports
Minister for Major Projects
Minister for Manufacturing



DEPARTMENT OF TRANSPORT,
PLANNING AND LOCAL INFRASTRUCTURE



PORTS



Key features of the 2014-15 Ports and Major Projects Budget

The sale of the Port of Melbourne

\$58 million for port rail shuttles

\$220 million to upgrade and standardise regional freight lines

**\$25.7 million for boating infrastructure, local port access
and marine pollution response equipment**

DEPARTMENT OF TRANSPORT,
PLANNING AND LOCAL INFRASTRUCTURE



State Government
Victoria

Leasing the Port of Melbourne



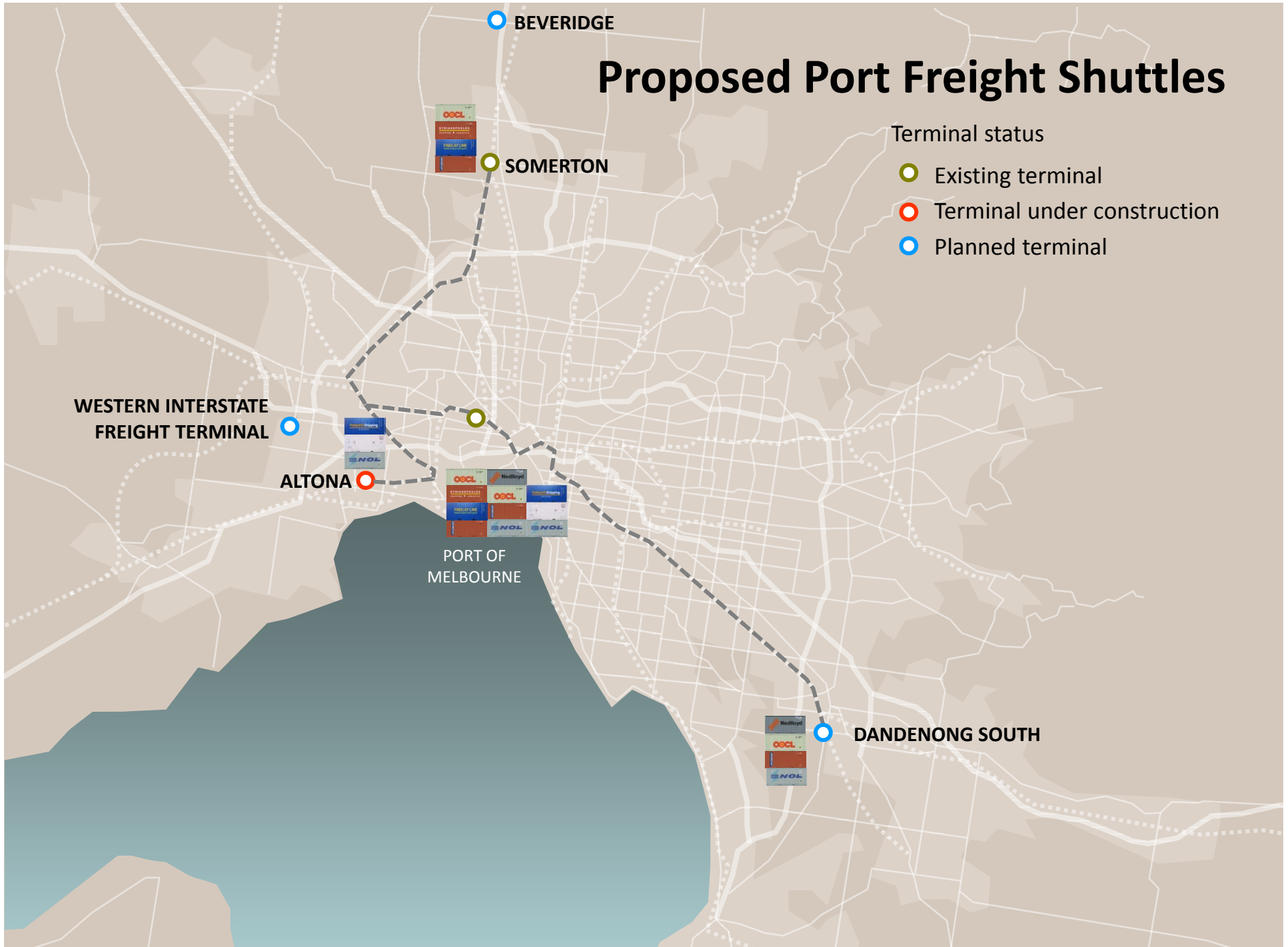
DEPARTMENT OF TRANSPORT,
PLANNING AND LOCAL INFRASTRUCTURE



Proposed Port Freight Shuttles

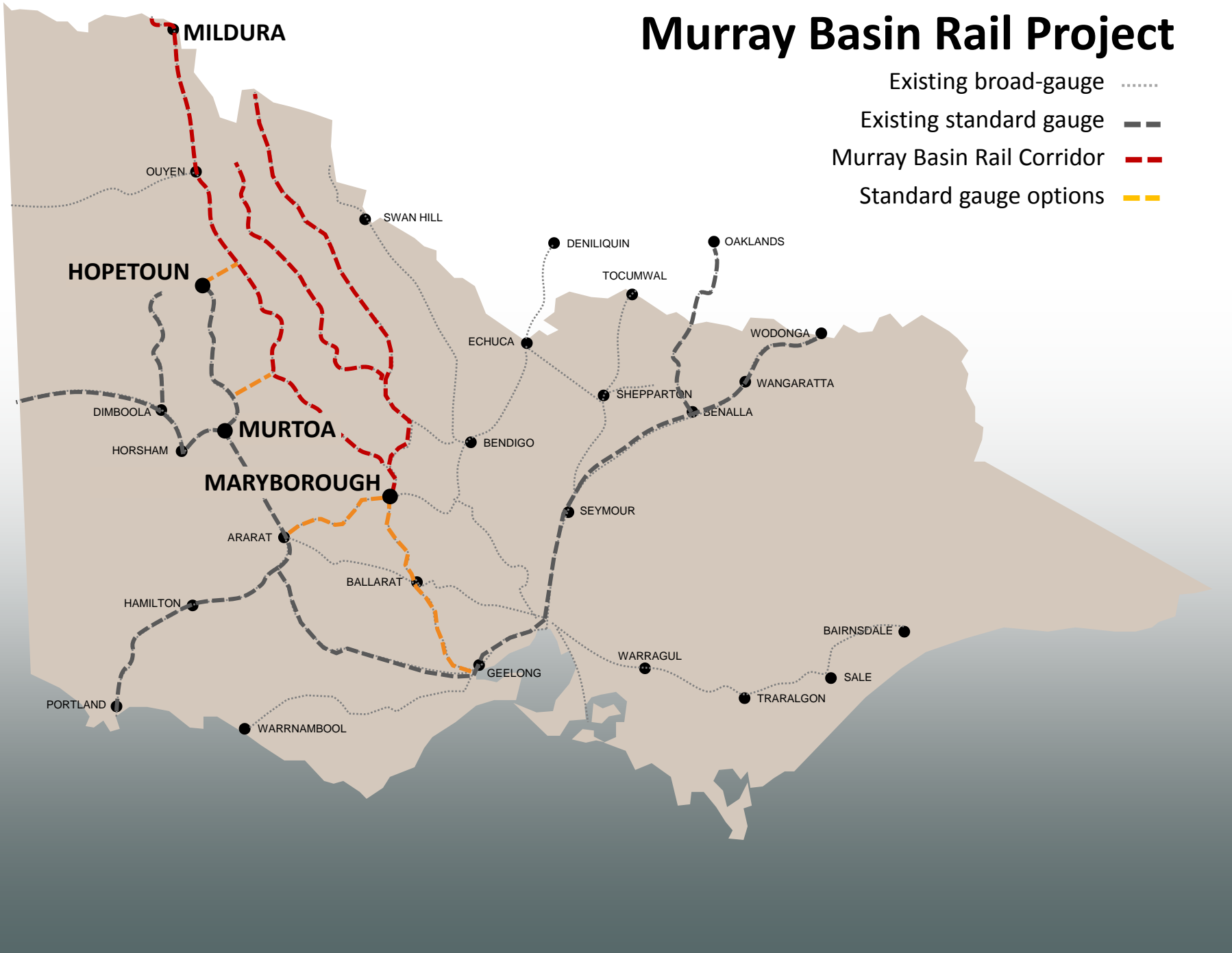
Terminal status

- Existing terminal
- Terminal under construction
- Planned terminal



Murray Basin Rail Project

- Existing broad-gauge (dotted line)
- Existing standard gauge - - - (dashed line)
- Murray Basin Rail Corridor - - - (thick red dashed line)
- Standard gauge options - - - (thick orange dashed line)



PERTH

SYDNEY

Potential connection to trans-continental link

- Existing broad-gauge —
- Existing standard gauge - - - -
- Murray Basin Rail Corridor - - - -
- Standard gauge options - - - -

Murray Basin Rail Project

BROKEN HILL

MILDURA

ADELAIDE

HOPETOUN

DIMBOOLA

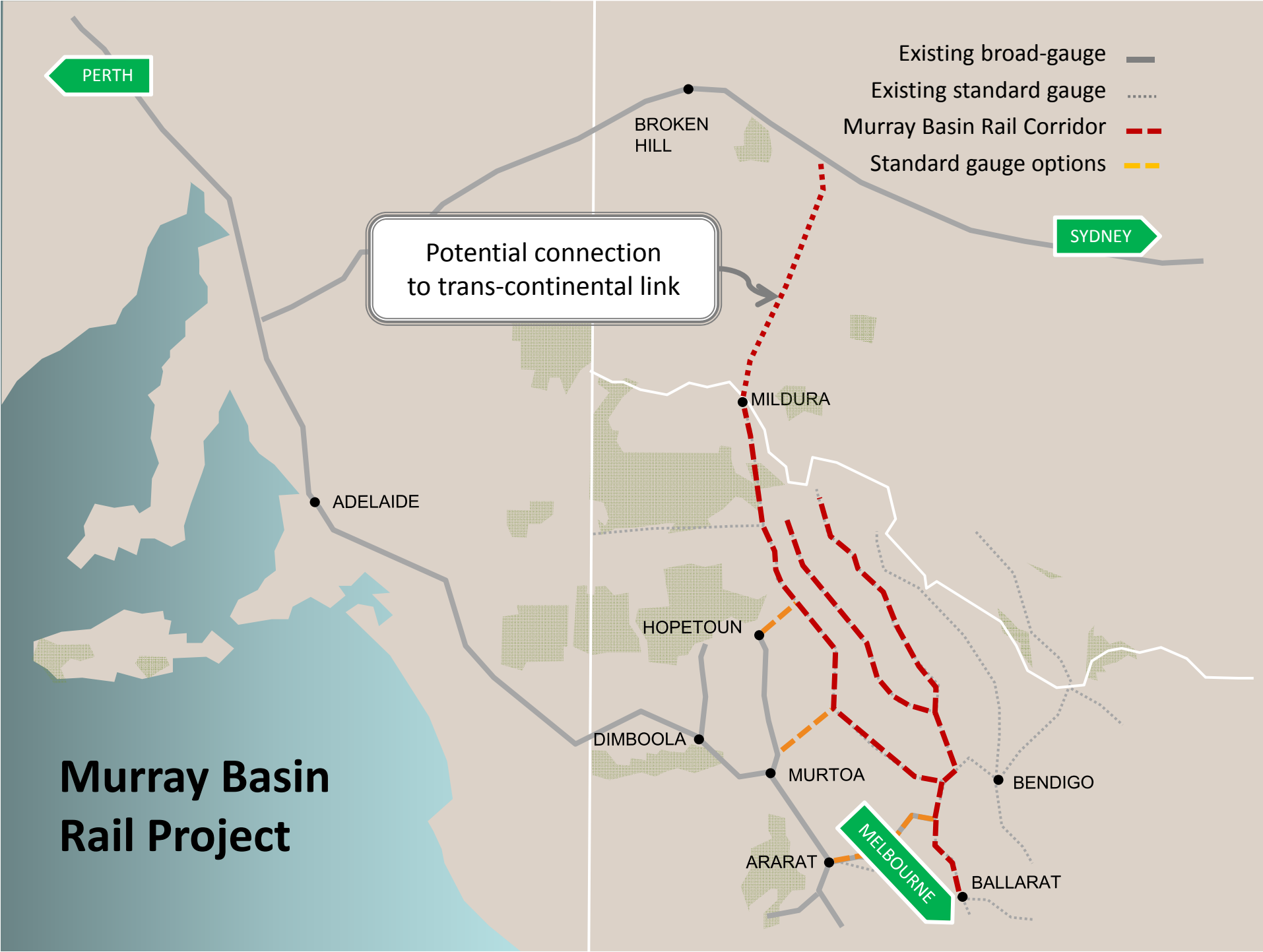
MURTOA

BENDIGO

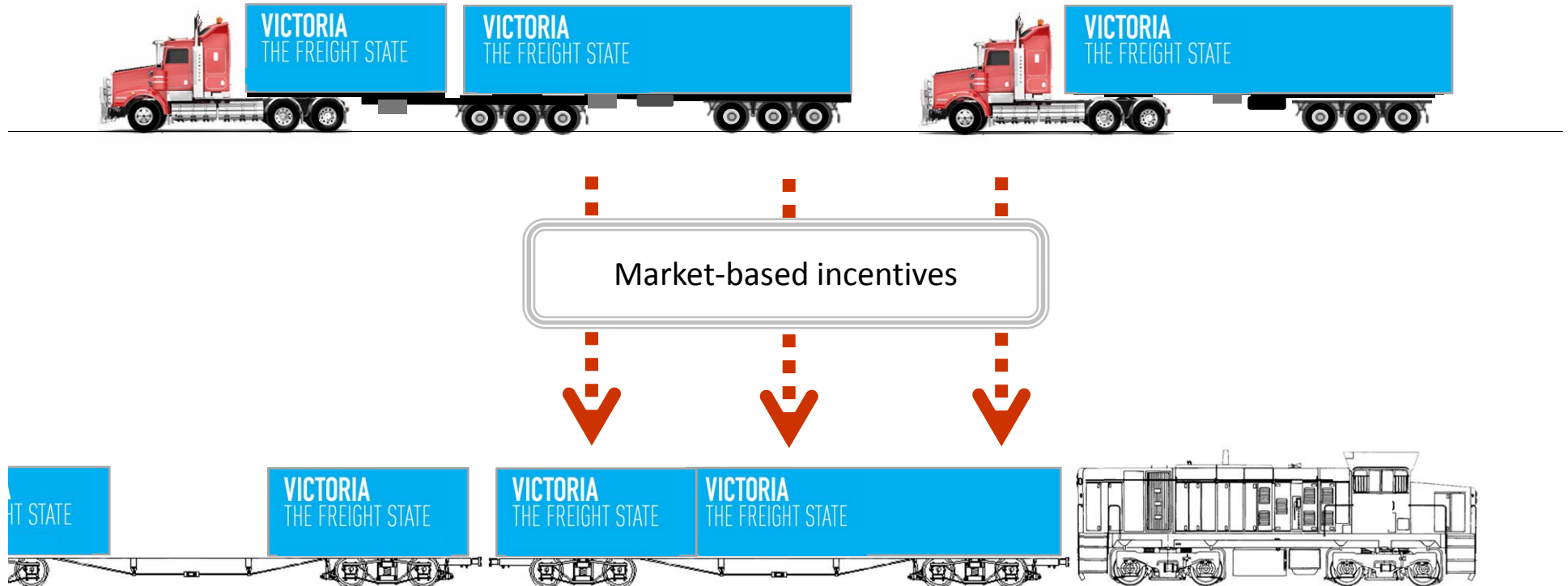
ARARAT

MELBOURNE

BALLARAT



Mode Shift Incentive Scheme



DEPARTMENT OF TRANSPORT,
PLANNING AND LOCAL INFRASTRUCTURE



Boating Safety and Facilities Program



DEPARTMENT OF TRANSPORT,
PLANNING AND LOCAL INFRASTRUCTURE



Recent projects funded by the BSFP



Funding boost for marine pollution equipment



DEPARTMENT OF TRANSPORT,
PLANNING AND LOCAL INFRASTRUCTURE



Early works at the Port of Hastings



DEPARTMENT OF TRANSPORT,
PLANNING AND LOCAL INFRASTRUCTURE

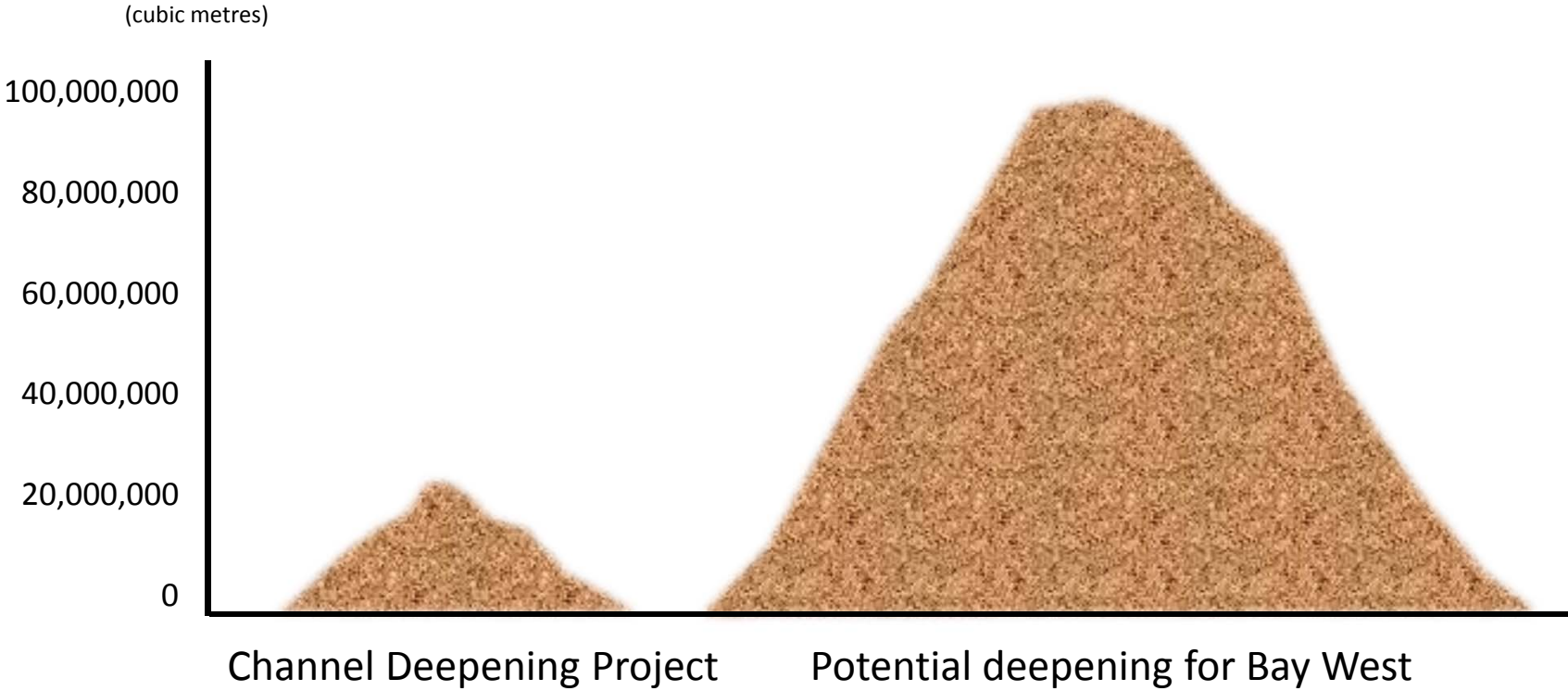


Hastings versus Bay West

| Hastings | Bay West | |
|---|---|--------------------------------------|
|  |  | Confirmed location |
|  |  | Existing port |
|  |  | Existing shipping channels |
|  |  | Zoned land for port use |
|  |  | Operational within 15 years |
|  |  | Massive dredging avoided |
|  |  | Estimated cost <10 billion |
|  |  | A realistic proposition |



Dredging – CDP versus Bay West



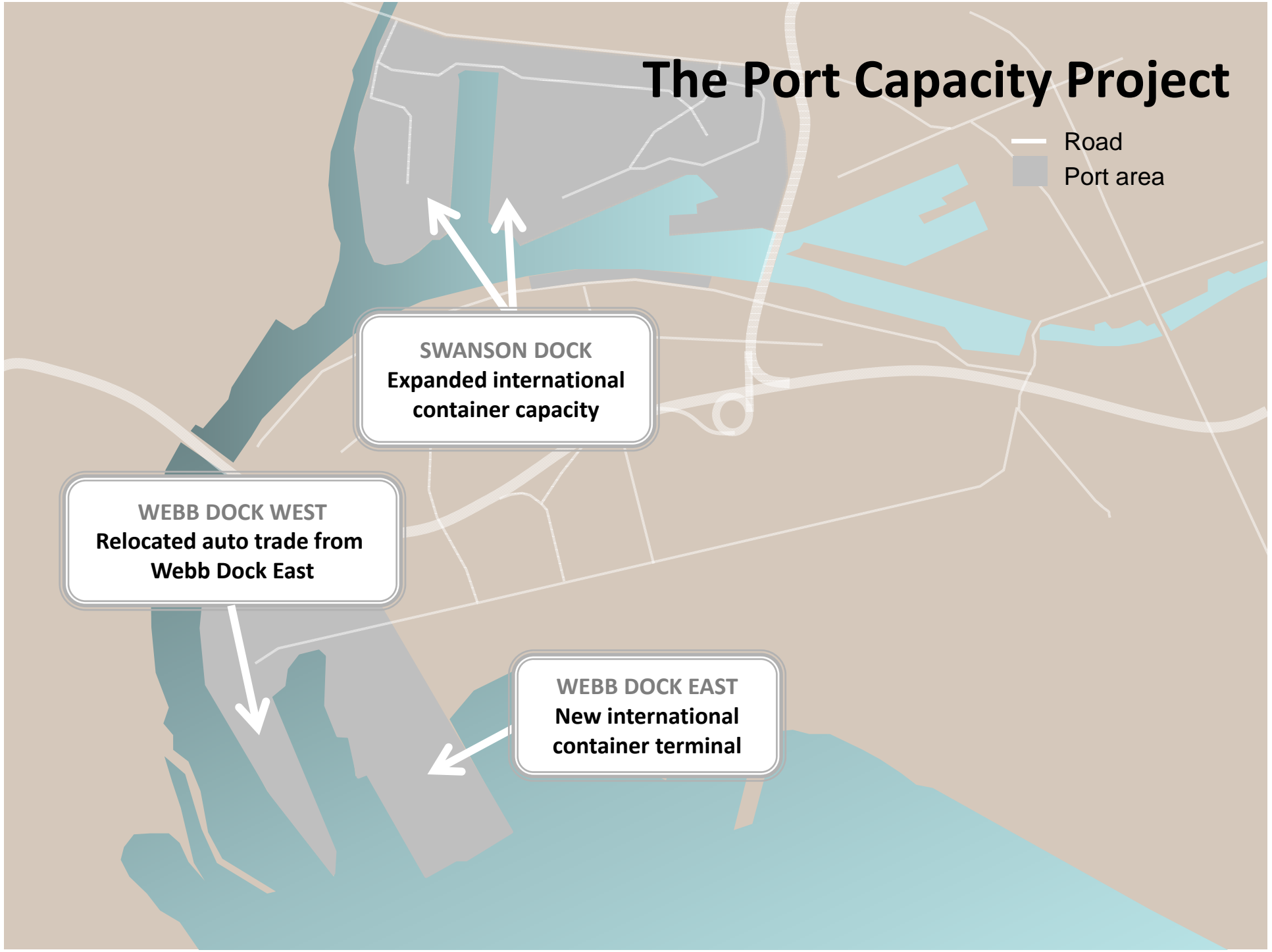
The Port Capacity Project

— Road
■ Port area

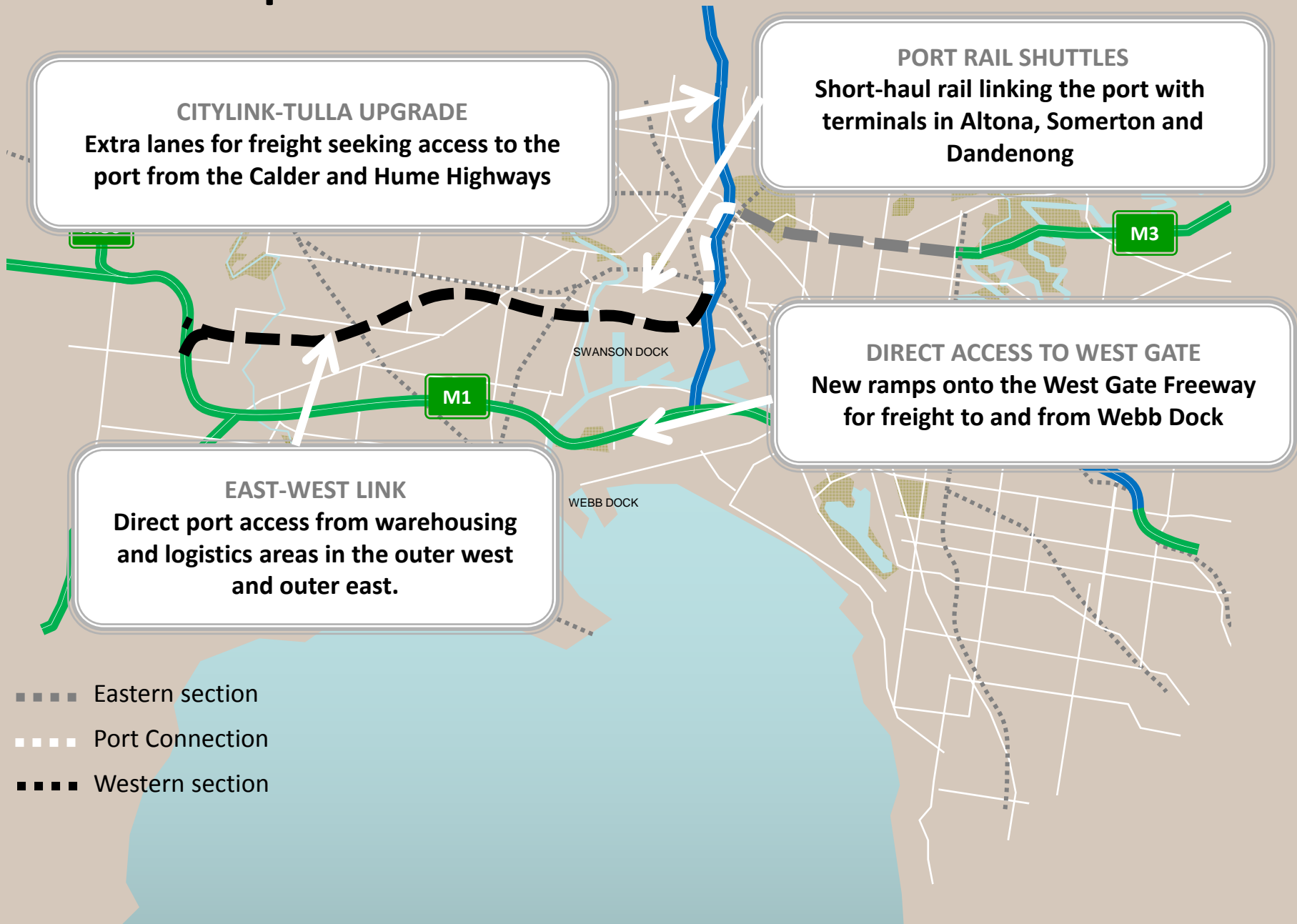
SWANSON DOCK
Expanded international
container capacity

WEBB DOCK WEST
Relocated auto trade from
Webb Dock East

WEBB DOCK EAST
New international
container terminal



A boost to port access



David Hodgett MP
Minister for Ports
Minister for Major Projects
Minister for Manufacturing



DEPARTMENT OF TRANSPORT,
PLANNING AND LOCAL INFRASTRUCTURE



PORTS

