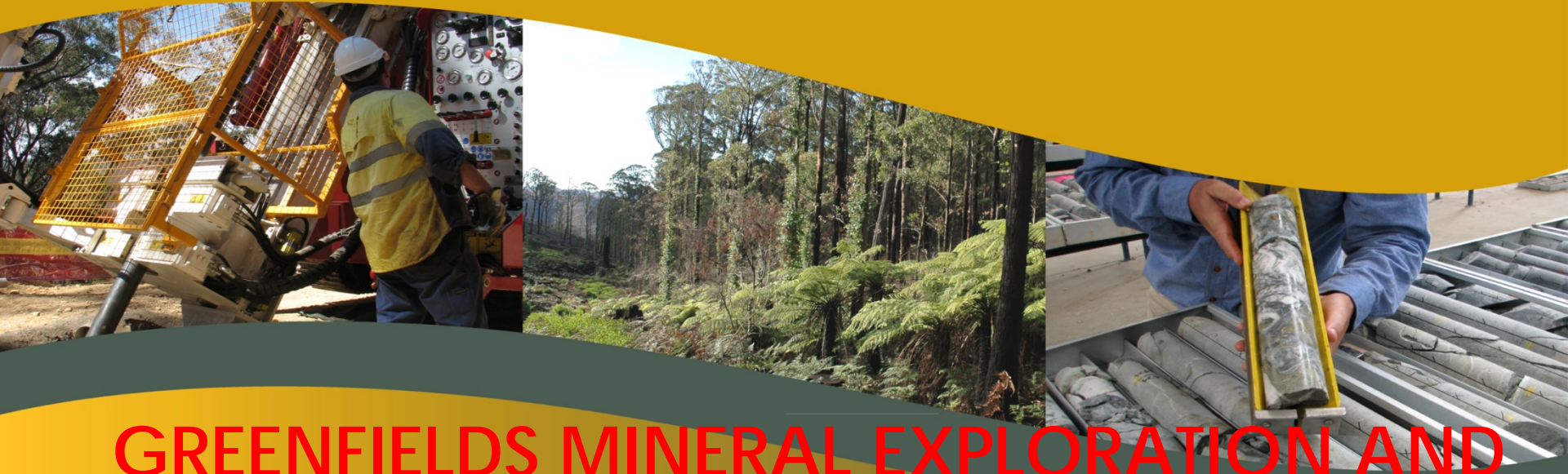


Economic Development & Infrastructure Committee



GREENFIELDS MINERAL EXPLORATION AND PROJECT DEVELOPMENT INQUIRY

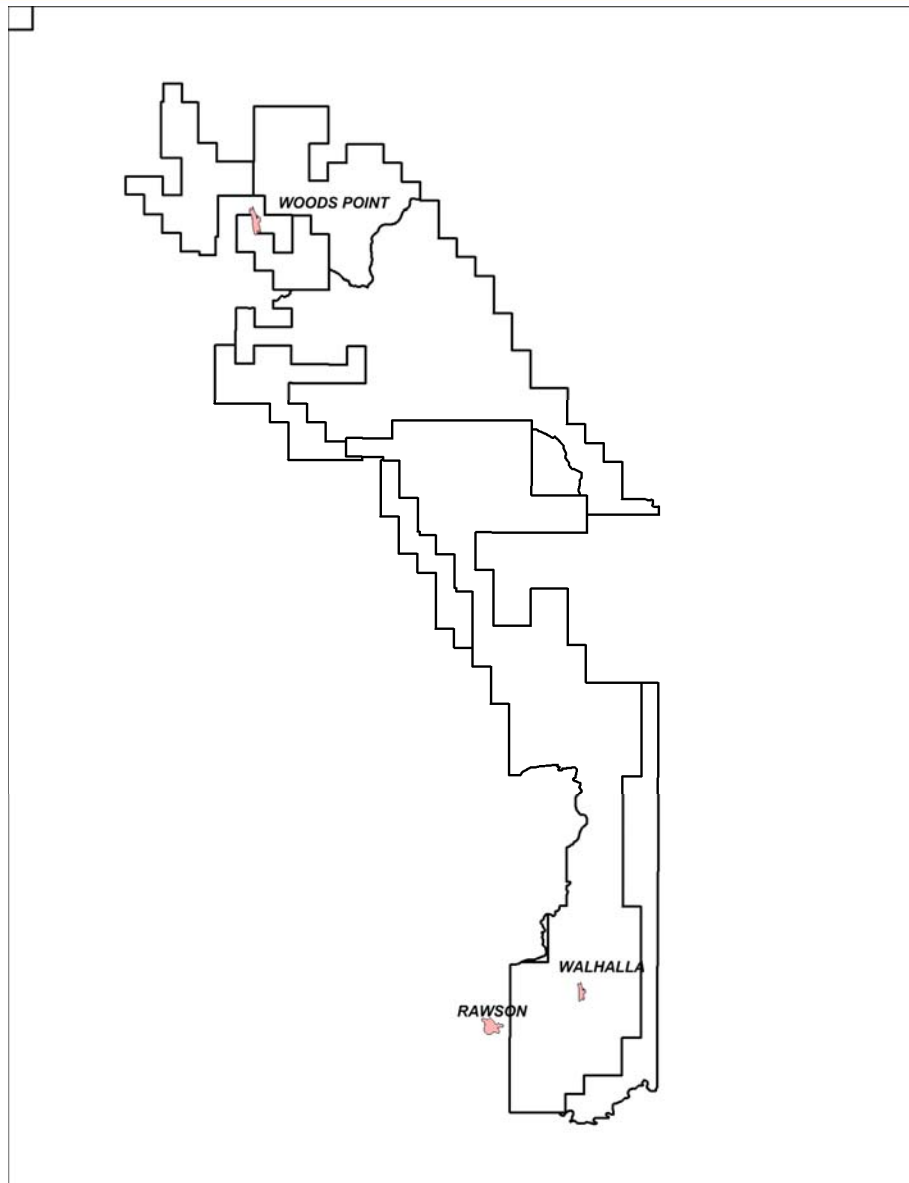
Walhalla Gold Project – Locality



Introduction

- Focused on Walhalla Gold Project - a goldfield with significant high grade historical production of 4 million ounces
- Successful exploration requires detailed testing and examination over prolonged periods
- Terrain and remoteness are substantial factors
- Significant restrictions on access and timeliness of approvals for this access, exist currently
- Exploration and Mineral Development are important, valuable social activities and would benefit from Ministerial direction to Departments in support of this
- Rational, considered processes can be implemented, which deal with the concerns of all parties in timely and efficient fashion, to the benefit of all

Walhalla – Woods Point Goldfield



- Orion Exploration Licences
- 75 km in extent north - south

Recorded Historical Mining Sites



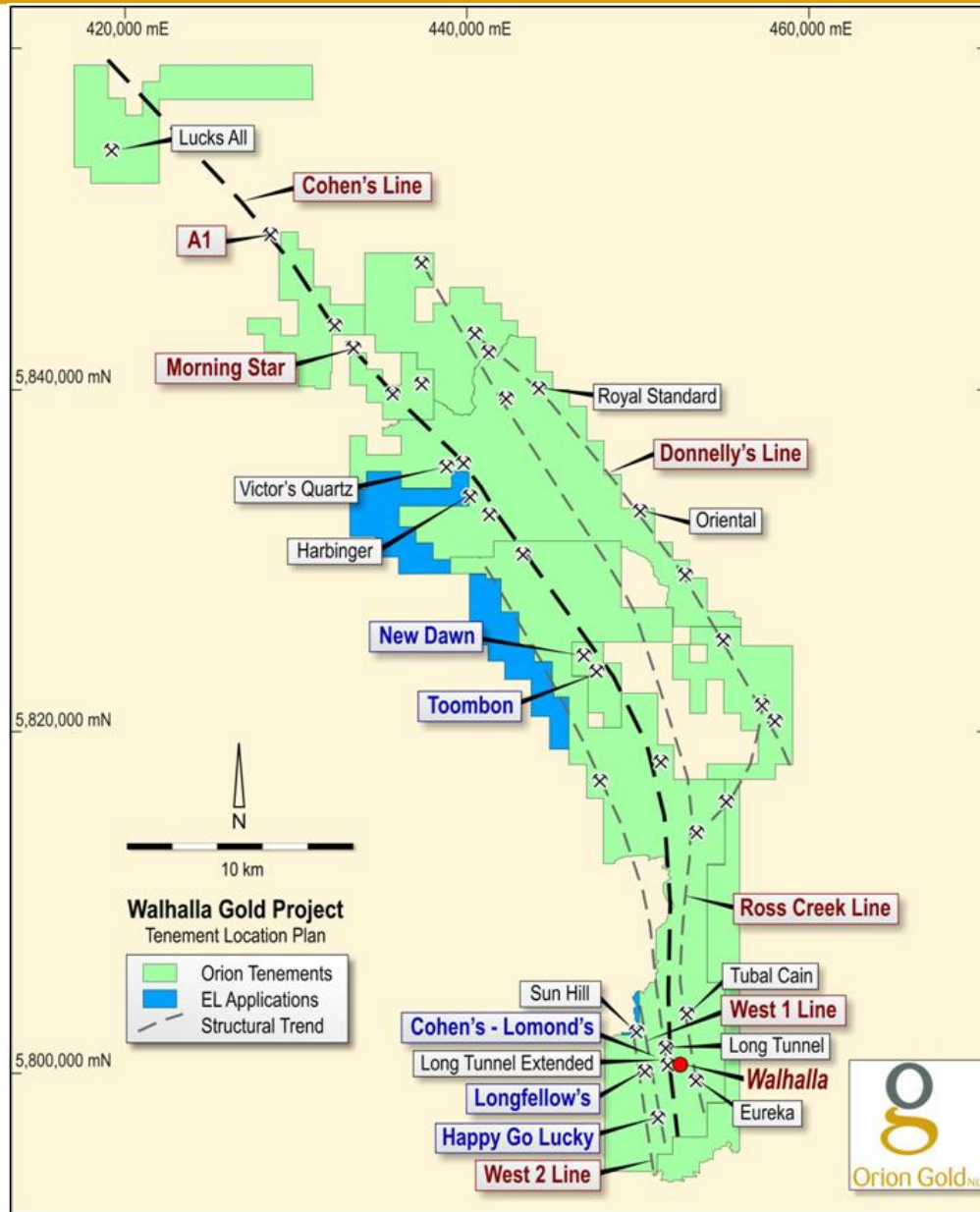
- 420 recorded mines

Walhalla Trend



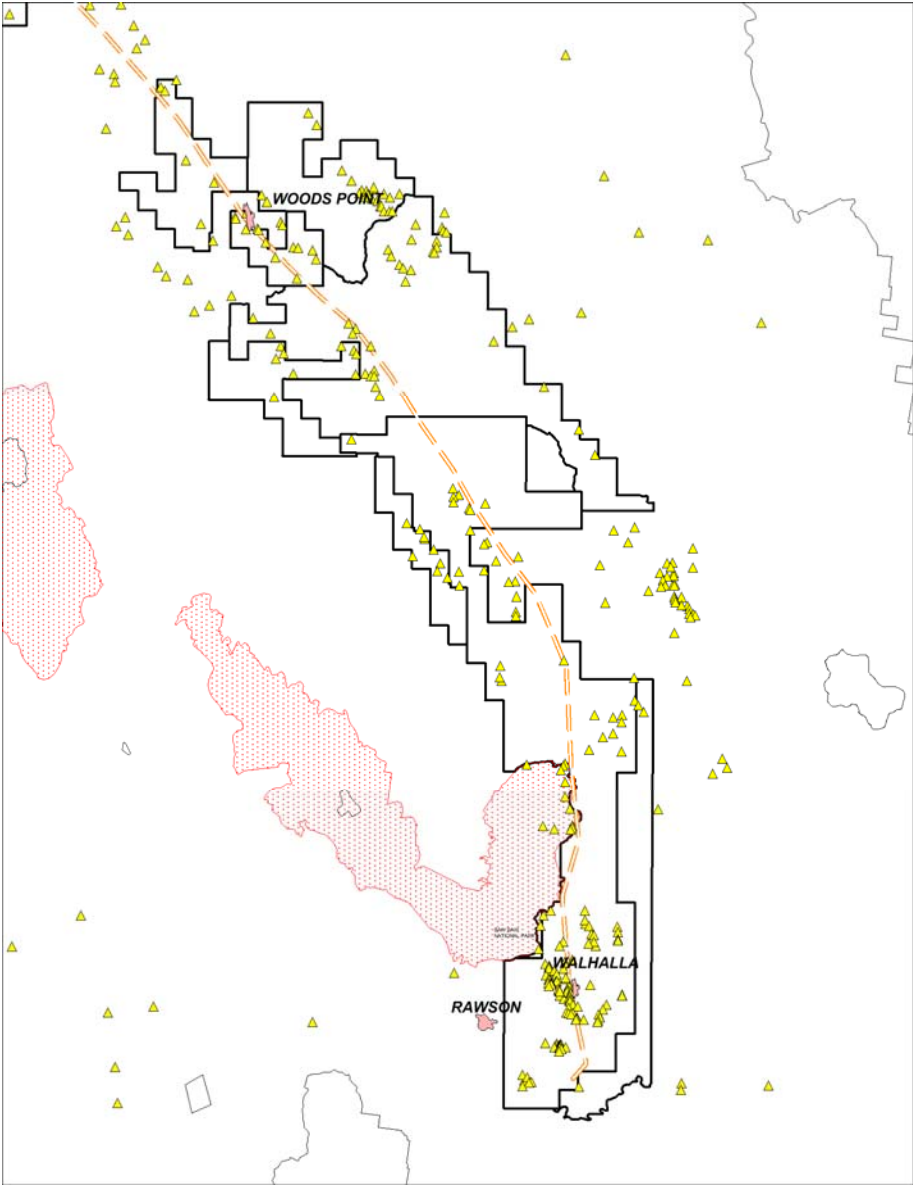
- Walhalla Line trend has mines producing over 70% of the recorded gold production

Tenement Holdings

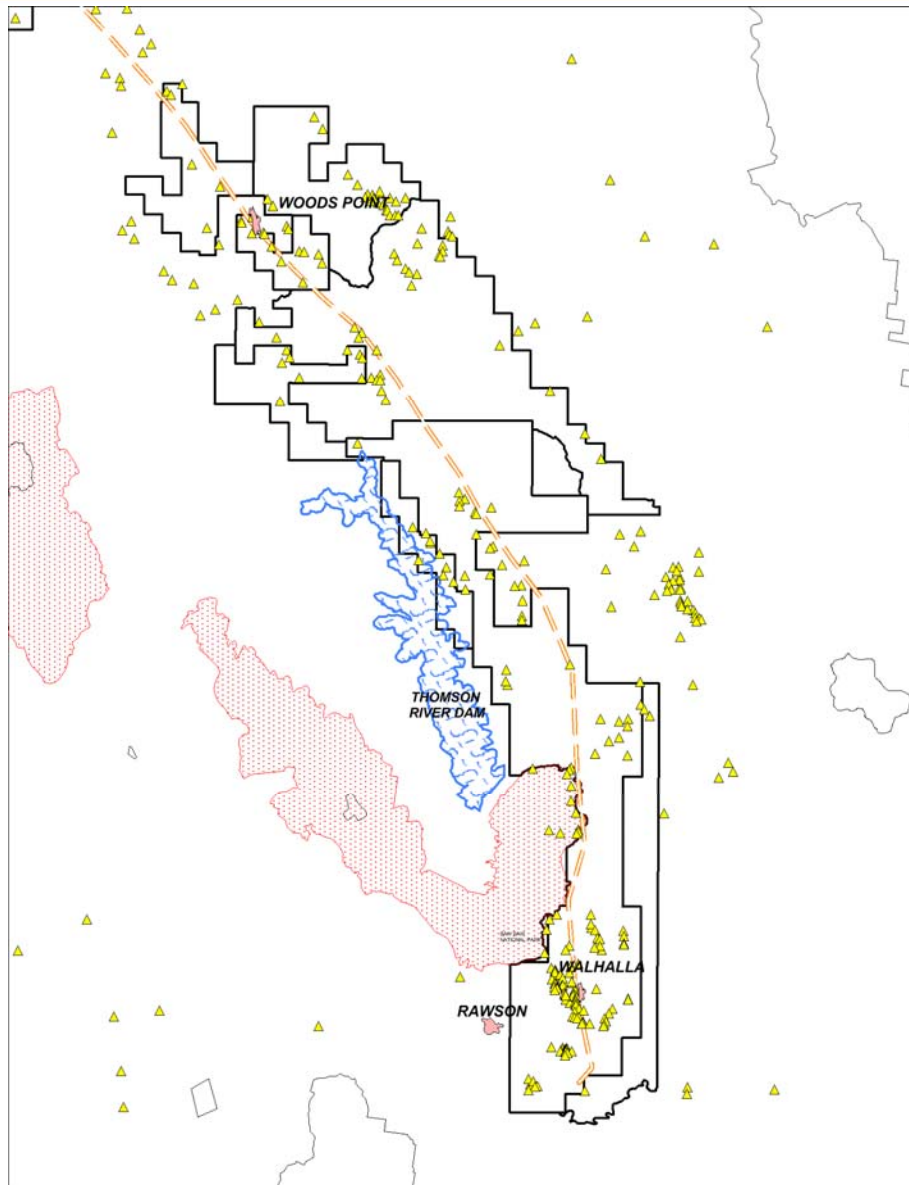


- Approx 550 square kilometres
- 420 historic workings - indicate the location of mineralisation and outline the mineralised 'trends'
- Minimal modern day exploration
- Work Plan approvals detailed, specific and long winded process - minimum 3 months

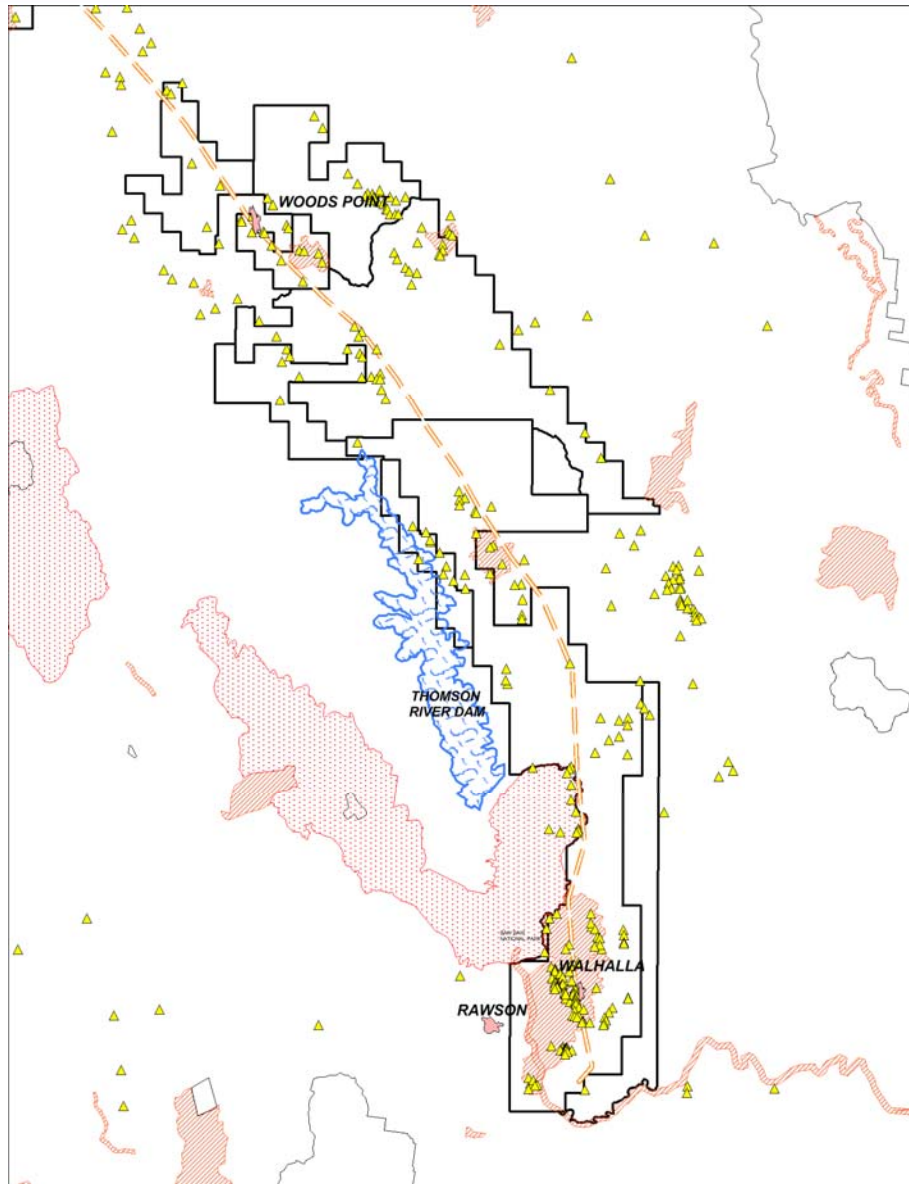
Restricted Areas – National Parks



Restricted Areas – Thomson River Dam

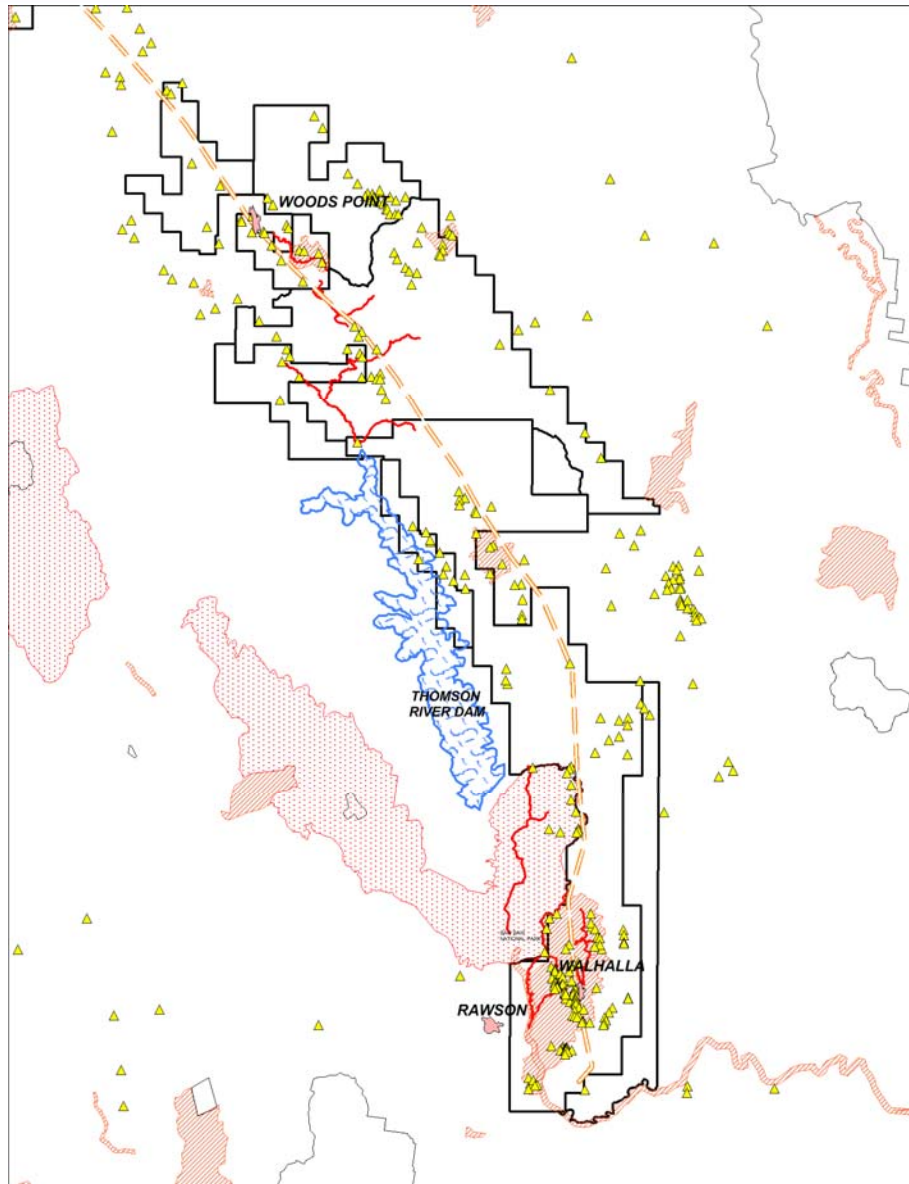


Restricted Areas – Historical Sites



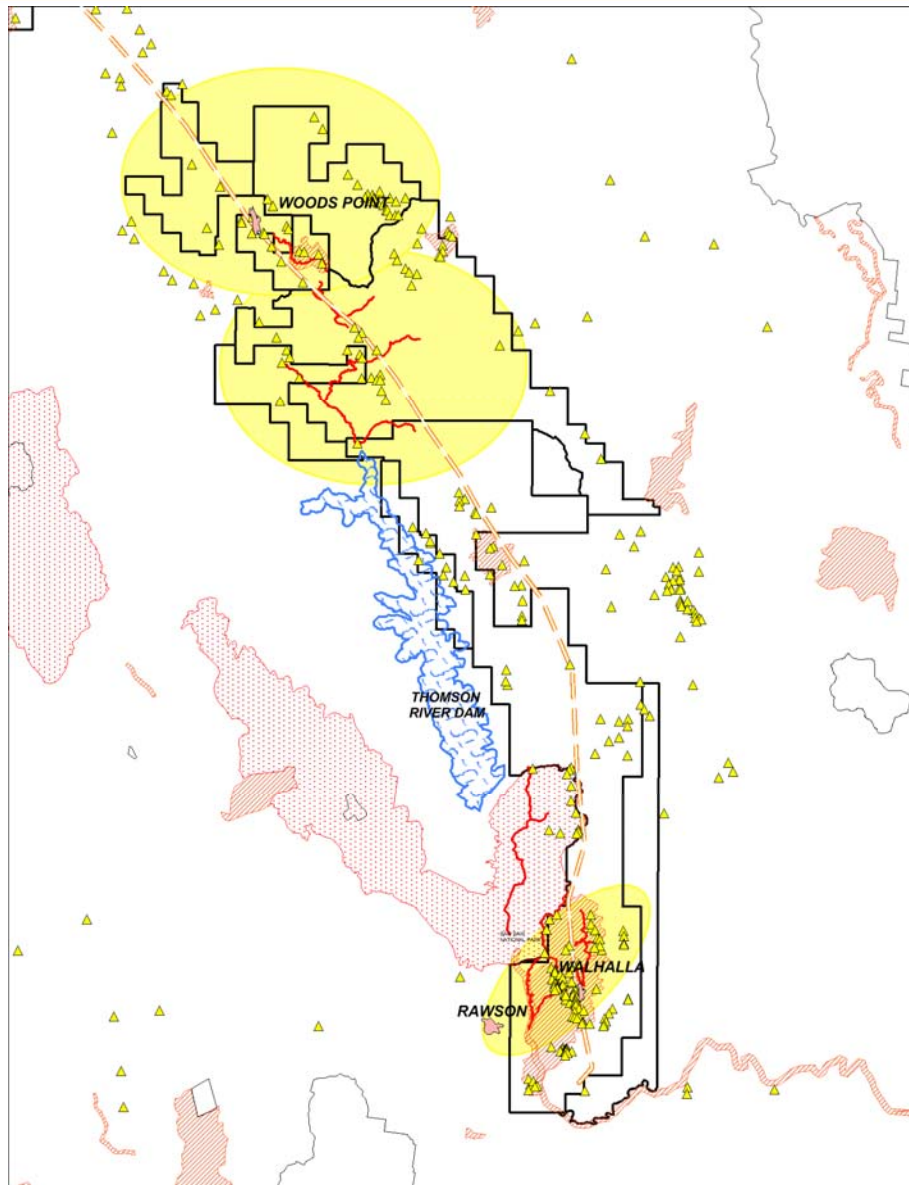
- S44 Approval is required for activities within Historic Reserves
- Minimum time 28 days
- Can only be sought once Work Plan approval received
- Minor variations require re-approval

Restricted Areas – Seasonal Road Closure



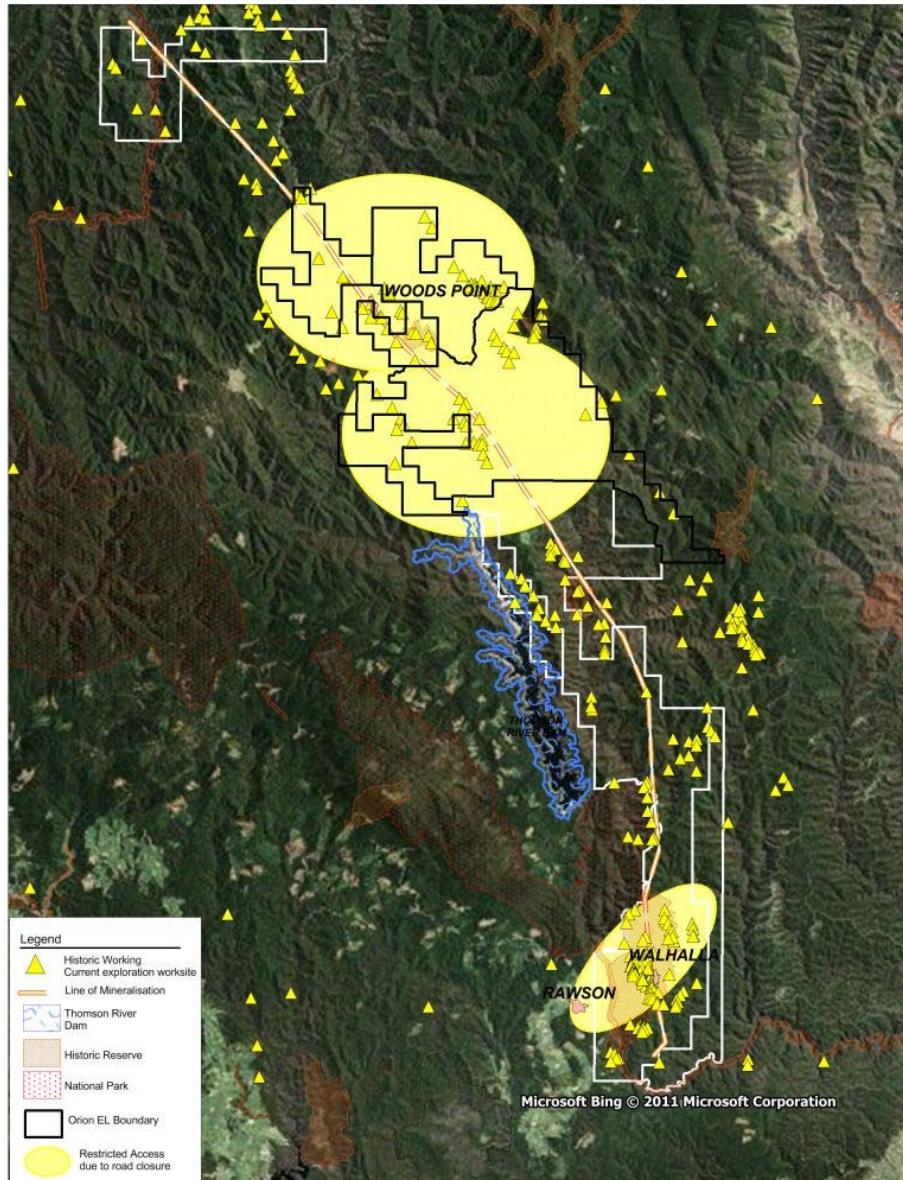
- Seasonal Road Closures prevents access for up to 7 months of the year
- Simple undertakings could facilitate registered forest users, such as explorers, maintaining access with defined responsibilities

Restricted Areas – Seasonal Road Closure



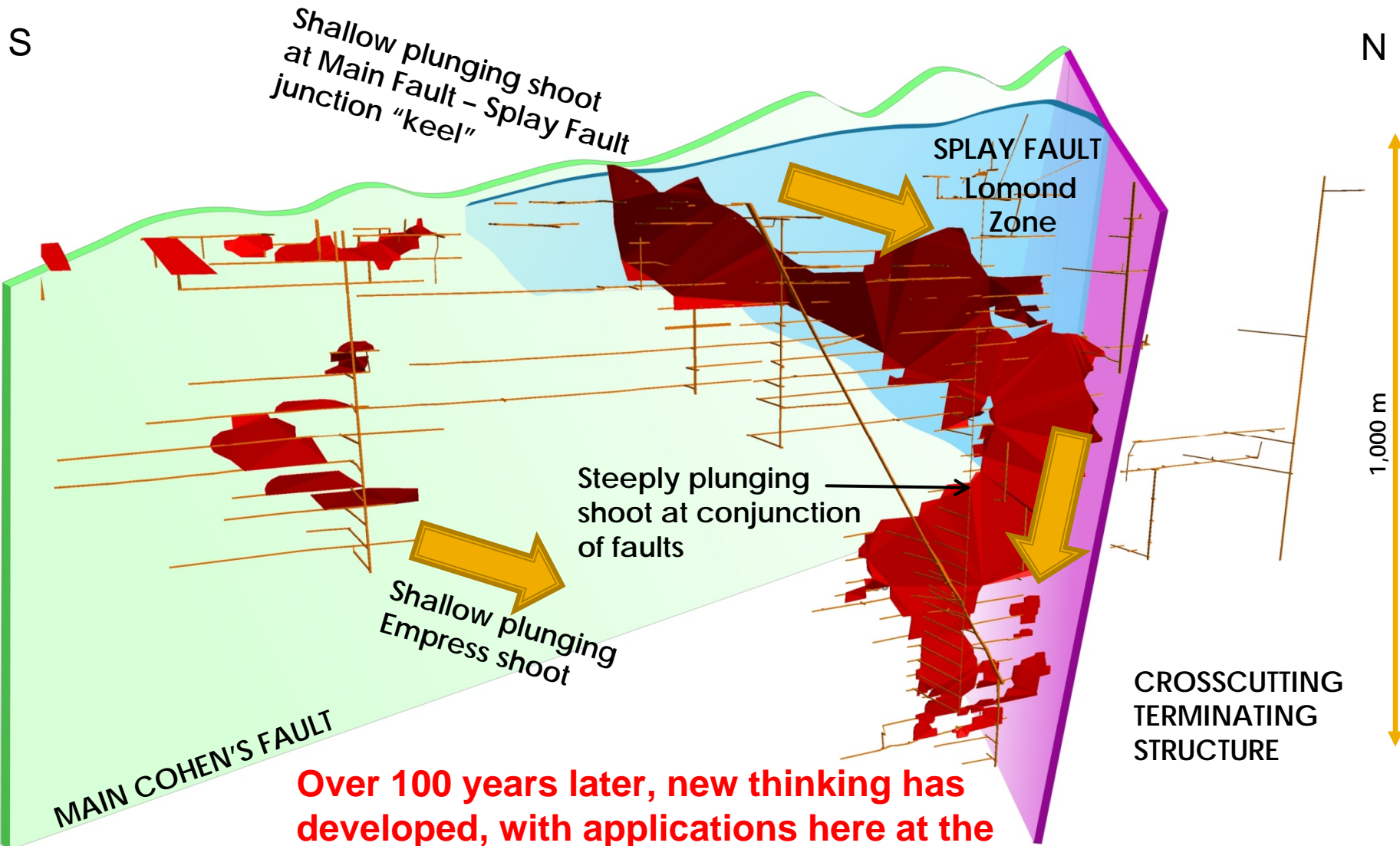
- Areas inaccessible through road closures
- Very limited areas of tenements have year-round access

Restricted Access



- Exploration is a generative, developmental process
- Uses progressive results to determine forward plans
- Requires timely and flexible access over long periods
- Interdepartmental rivalries and lack of guidance in regulation
- Incongruous restriction of access construction for relatively minor activities

Cohen's Reef - New Structural Understanding



Over 100 years later, new thinking has developed, with applications here at the biggest historical mine & regionally

Early Mining Deforestation



Walhalla Historical Deforestation



Walhalla Complete Regrowth



Questions



Orion Gold_{NL}