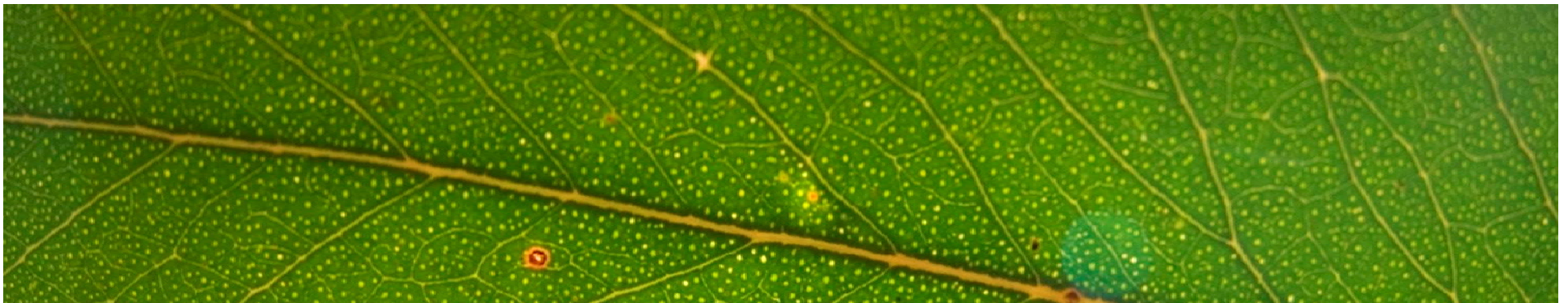




*Healthy Parks  
Healthy People®*

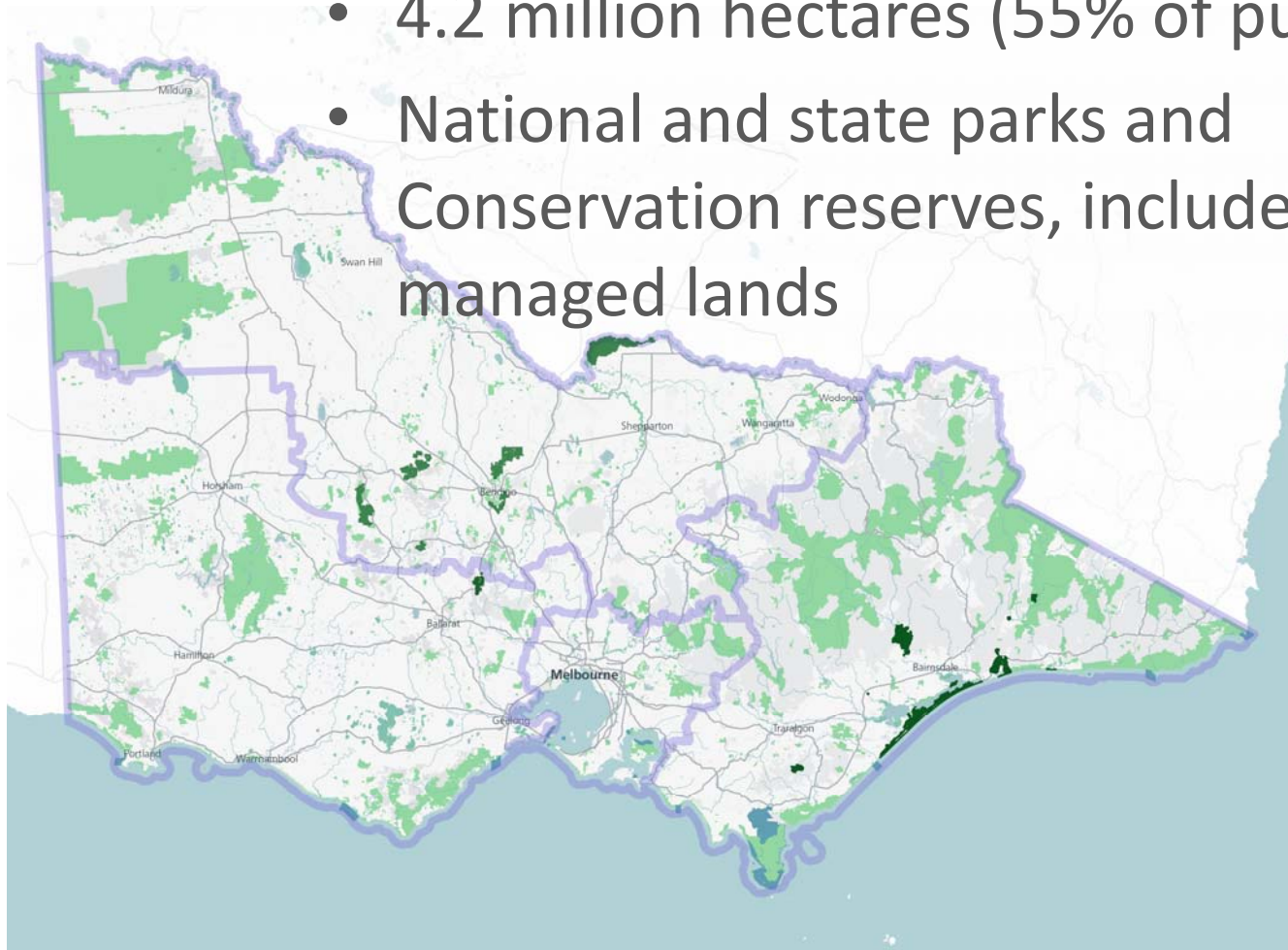


# Parks Victoria's Role in Bushfires and Bushfire Preparedness



# Parks Victoria Managed Land

- 4.2 million hectares (55% of public land)
- National and state parks and Conservation reserves, includes co-managed lands



# We Work Together

- To meet the Secretary's responsibilities in the Forest Act, Parks Victoria and DELWP work in partnership before, during and after Bushfires to plan and deliver bushfire preparedness, response and recovery outcomes.
- Our partnership is based on an Agreement – Parks Victoria / DELWP Fire Management Arrangement
  - In 2 parts
    - An Arrangement that details the principles and expectations of each agency
    - An annual Cooperative Operating Plan that details the financial arrangements and outcomes.



*Healthy Parks  
Healthy People®*





# Safer Together

- We work with DELWP, CFA, EMV and communities to implement "Safer Together" outcomes



# Parks Victoria's Safety First Zero Injuries Initiative

- Parks Victoria is implementing a safety improvement program.
- Safety First Zero injuries is underpinned by four key safety expectations that apply to everyone, everyday:
  - Take responsibility for safety
  - Stop, think and plan
  - Talk about safety everyday
  - Call out unsafe behaviour

**Safety  
First**  
zero  
injuries

# Resourcing and Budget

- Parks Victoria's Bushfire Budget is identified in an Annual Cooperative Operating Plan with DELWP.
- Approximately 25% of Parks Victoria's total labour inputs are directed to bushfire preparedness, prevention and response.
  - Includes community engagement, planned burning and other fuel management programs.
- Budget about \$46mil per annum

# How Does Parks Victoria Contribute?

Parks Victoria employs about 720 staff trained in bushfire and emergency management roles.

- These staff are included in DELWP's available bushfire management resources
- Additional 200 seasonal (Project) firefighters across the state.
- Undertake bushfire preparedness, readiness and response activities.
- Parks Victoria's structure includes about 150 staff in dedicated bushfire and emergency prevention and preparedness positions.
- The remaining 570 staff undertake bushfire activities as rostered or requested by DELWP.





# Bushfire Management Assets

- DELWP owns specialist bushfire assets and equipment including:
  - Bulldozers
  - Fire tankers
- Parks Victoria staff operate this equipment as required to undertake bushfire prevention, response and recovery activities.



# Bushfire Management Assets

- Parks Victoria's fleet includes 141 first attack vehicles that are converted to small water carriers for fire activities.
- Parks Victoria also has a fleet of small plant such as tractors that undertake bushfire prevention activities:
  - Maintenance and construction of fuel breaks
  - Planned burn preparation

# Fuel Management



# Fuel Management

- DELWP in partnership with Parks Victoria, undertakes fuel management to reduce bushfire risk across land tenures, delivering one fuel management program on public land in Victoria.
- Over the next 3 years almost 40% of the fuel treatment program is planned to be undertaken on the Parks Victoria estate.

# Fuel Management

- Fuel Management is underpinned by Code of Practice for Bushfire Management on public land.

The two objectives of the code are:

- To minimise the impact of major<sup>1</sup> bushfires on human life, communities, essential and community infrastructure, industries, the economy and the environment. Human life will be afforded priority over all other considerations.
- To maintain or improve the resilience of natural ecosystems and their ability to deliver services such as biodiversity, water, carbon storage and forest products.



# Fuel Management – Non-Burning

- Melbourne Fire and Emergency Program (MFEP)
- Each year approx. 10,000 ha of fuel is treated by mechanical means on the Parks Victoria estate



# Climate Change

## Ecosystem Resilience

- Planned burning for ecological outcomes



Photo: Forest Fire Management Victoria, Mildura

# Monitoring, Evaluation and Reporting (MER)

- Measure and understand the impacts of our activities







*Healthy Parks  
Healthy People®*

