



# Submission to Inquiry into Environmental Design and Public Health

**David Hodge**

Acting Deputy Secretary

Department of Planning and  
Community Development

**John Ginivan**

Acting Executive Director  
Planning Policy and  
Reform

# DPCD functions



- Supporting wellbeing and public health outcomes
- Legislation (Inc *P&E Act, EEA, Act, Heritage Act, Aboriginal Heritage Act, Building Act, Local Government Act, Regional Development Victoria Act*)
- Portfolios and related Programs inc
  - sport and recreation
  - regional development
  - heritage protection & cultural support programs
  - urban design
  - planning and environmental assessment
  - building standards and housing affordability

## Role of planning



Objectives in *Planning and Environment, 1987* include:

- provide for fair, orderly, economic and sustainable use, and development of land
- to secure a pleasant, efficient and safe working, living and recreational environment
- to conserve and enhance those buildings, areas or other places which are of scientific, aesthetic, architectural or historical interest or cultural value

## Role of planning



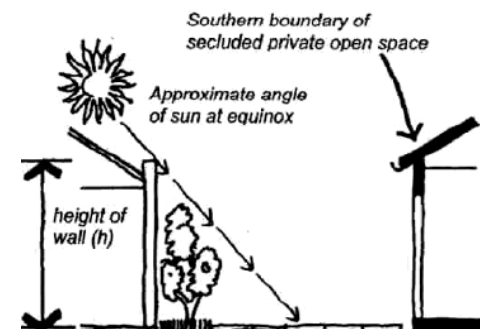
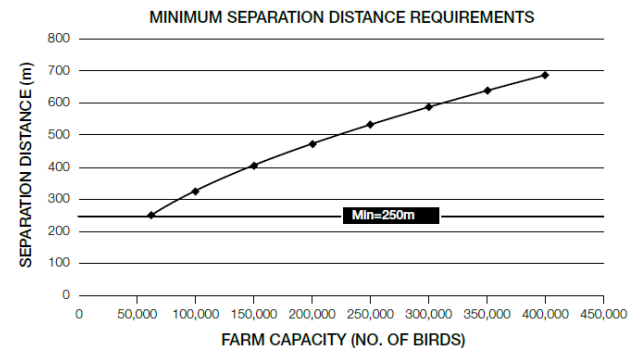
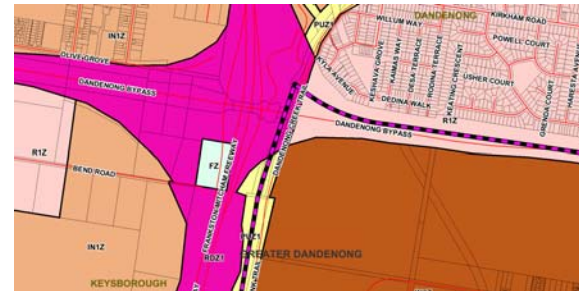
Objectives in *Planning and Environment* include:

- provide for fair, orderly, economic and sustainable use, and development of land
- to secure a pleasant, efficient and safe working, living and recreational environment
- to conserve and enhance those buildings, areas or other places which are of scientific, aesthetic, architectural or historical interest or cultural value

# Planning interventions



- Appropriate locations  
(Zoning, overlays, settlement plans)
- Good spatial layout  
(Buffers, master planning, urban design)
- Setting built for outcomes  
(Standards for solar access, walkability, etc)



# Planning interventions



- Planning for urban infrastructure  
(Master planning, place making, land designation)
- Development conditions  
(Hours of operation, building height, setback, etc)
- Coordination to support orderly development (Integrated transport and landuse planning)

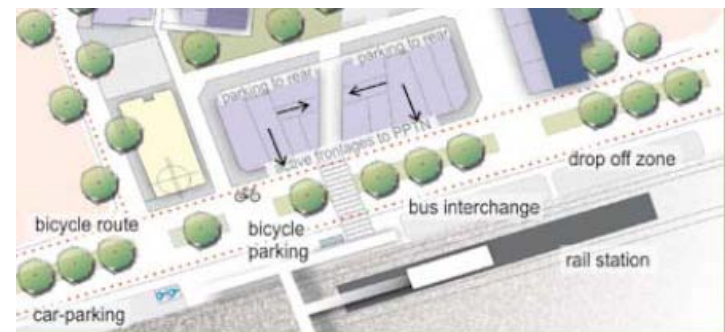
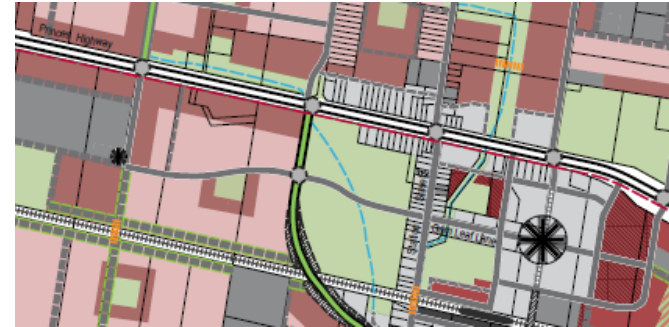


Figure 44: Development orientation around public transport nodes

# Wider portfolio responses



- Urban design and renewal programs  
(*Creating Better Places grants Expert Assistance Program, urban design and planner training*)
  - Good return on investment – benefit cost ratio of 3.0:1
  - Effective leverage of other funds
  - Stakeholders identify improved safety, amenity, mobility & improvements
- Building policy and program actions  
(energy efficiency, bushfire shelters, etc)



Creating Better Places 2010-11  
Urban Improvement Grants



# Specific planning outcomes



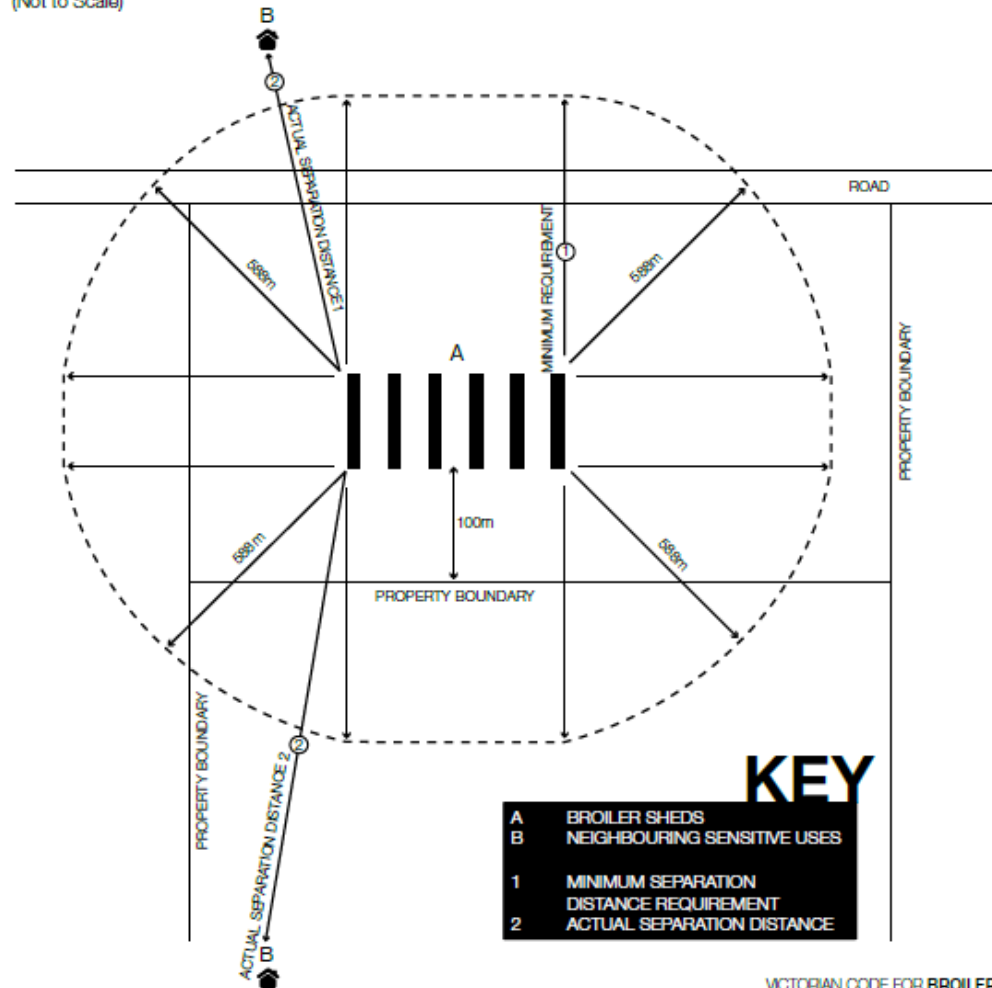
- **Health**
- Air quality
- Noise
- Landfills,
- Major hazard facilities and contaminated sites

Typical tools applied:

- Buffers,
- Site assessment codes
- Referral authority advice for permit conditions

## Broiler Farm 300,000

Example of Separation Distance for a 300,000 bird, class B farm.  
(Not to Scale)



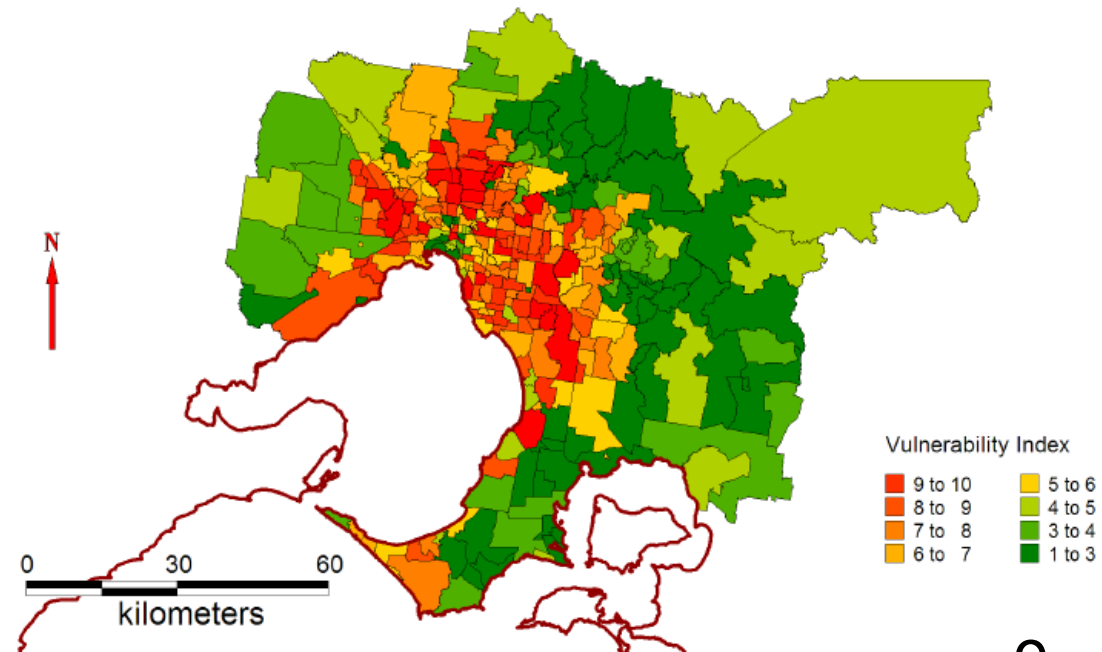


# Specific planning outcomes



- **Heatwave management for cities and towns**
- An emerging risk
  - Opportunities from integrated settlement and wastewater management
  - Link to open space planning

Heatwave plan for Victoria  
Protecting health and reducing harm from heatwaves



# Specific planning outcomes



## Safety

- **Safe Neighbourhoods:**
  - Urban layout, transport route planning, lighting, public surveillance, codes of best practice
- **Safe settlements:**
  - Location, zoning standards, decision guidelines for flood, fire, coastal inundation
  - Matching risk with appropriate landuse and building response



Oakleigh Village Rejuvenation: Eaton Mall lighting (CBP)



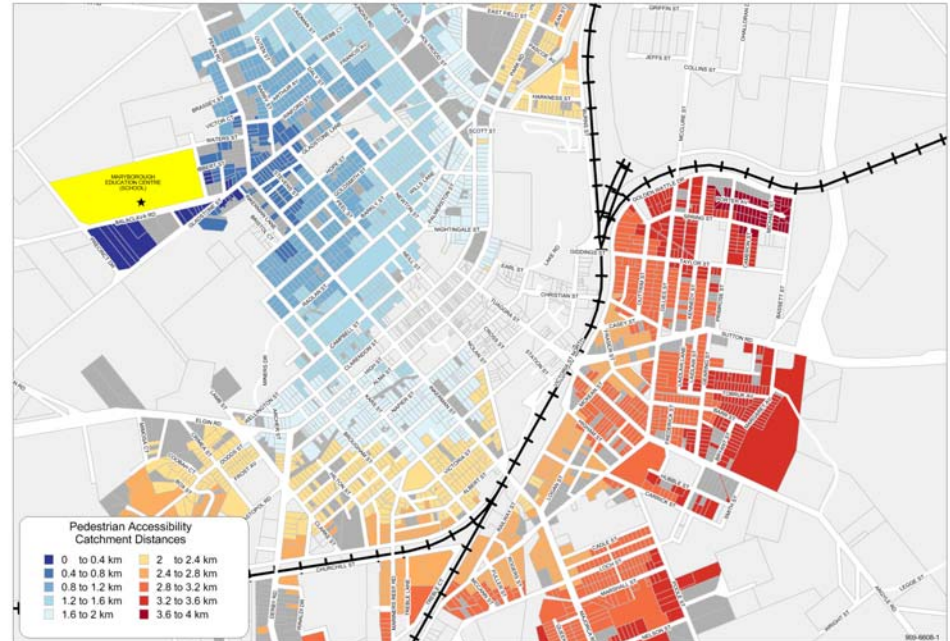
Mismatch between old flood overlays and Jan 2011 flood (Charlton)

# Specific planning outcomes



## • Access and walkability

- Planning objectives
- Subdivision design requirements
- Guidelines
- Obligations under *Transport Integration Act 2010*
- Walkability modelling



Maryborough: Pedestrian Accessibility (Residential Zoned Properties)  
Distance from Maryborough Education Centre (Prep - Yr 12 School)

Walkability model analysis (showing need for Meadowlink path, Broadmeadows)

Blue = good access, Red = Poor

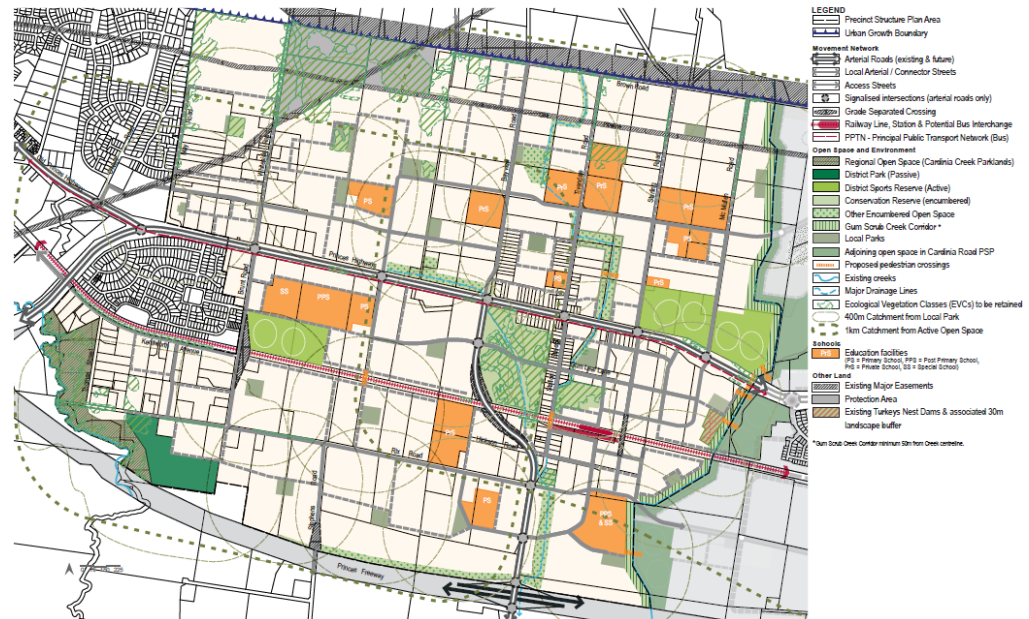
# Specific planning outcomes



## Passive and Active open space and facilities

- Existing provisions standards in VPP (Greenfields)
- GAA PSP process
- VEAC assessment
- Audit
- Existing area challenge
- Metro Planning Strategy

Plan 11: Open Space Network



Officer Precinct Structure Plan

Officer PSP – Open space plan – showing walkable park catchments as design feature

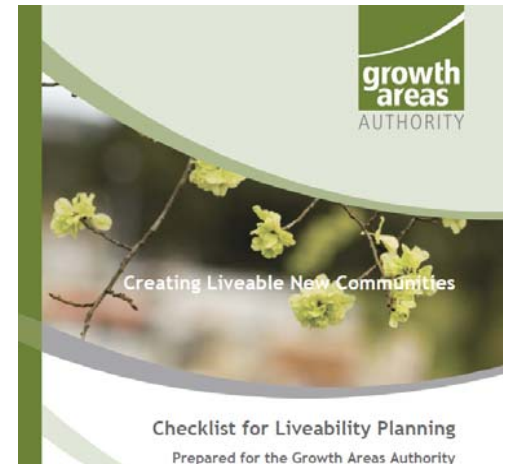
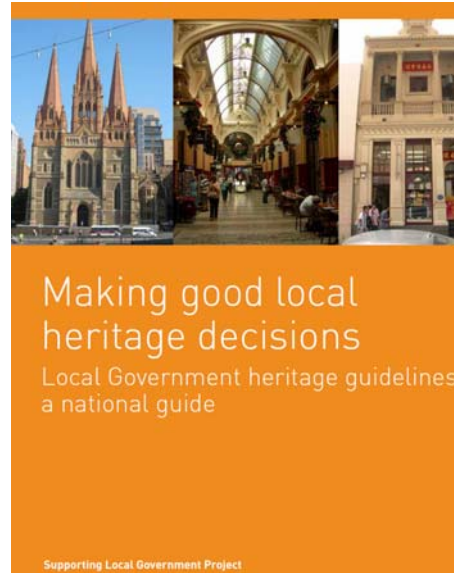
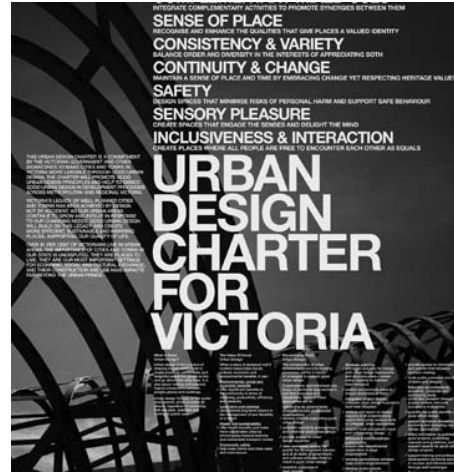
# Liveable neighbourhoods



## Existing planning provisions require planning authorities and developers to -

- recognise and protect cultural identity, neighbourhood character and sense of place (VPP Clause 56)
- apply 'ResCode' residential development provisions in Victorian planning schemes (Clause 54 & 55) and via the Victorian Building Regulations

## Design guides and training support best practice



## New policy agenda



- Advisory Committee to review the planning system in Victoria.
- Development of the forthcoming *Melbourne Planning Strategy*
- Both processes opportunities to review how to best achieve wellbeing, health and liveability goals.



Thank you