

# Frankston City Council

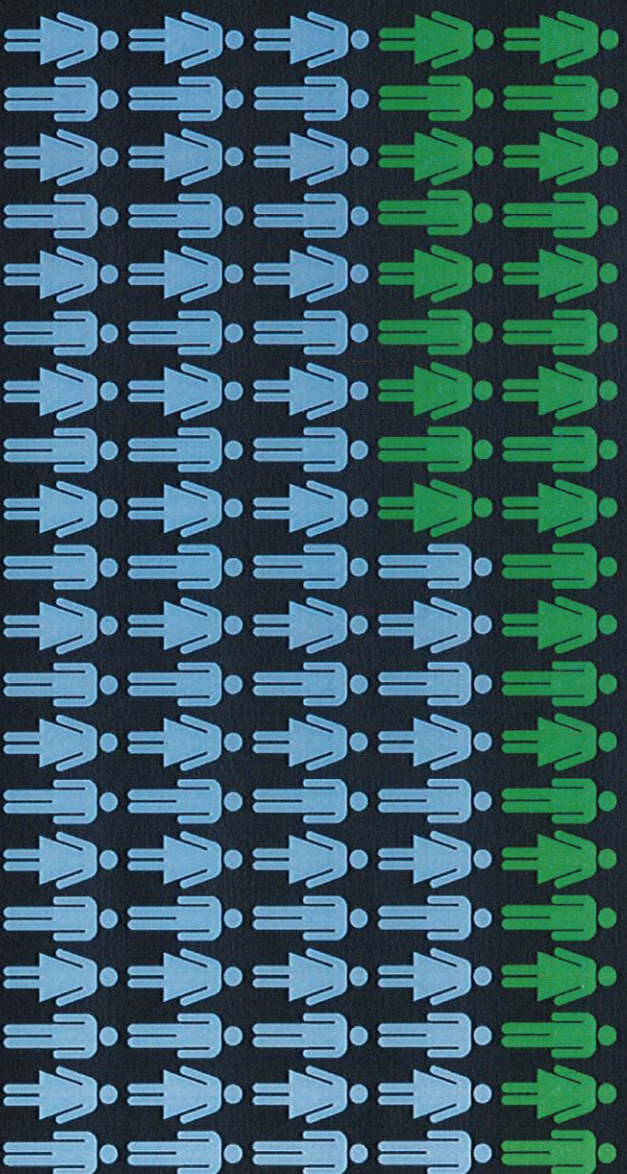
Inquiry into the proposed lease of the Port of Melbourne



*opportunity » growth » lifestyle*

Presentation to Parliamentary Select Committee for Port of Melbourne

For every 100 residents in Frankston City there are only **29 jobs** available locally.



Frankston City recorded a 15-year high unemployment-rate of **8.3%** in March 2015.

Pressure on South East Melbourne

# job growth versus population growth

2006-2011

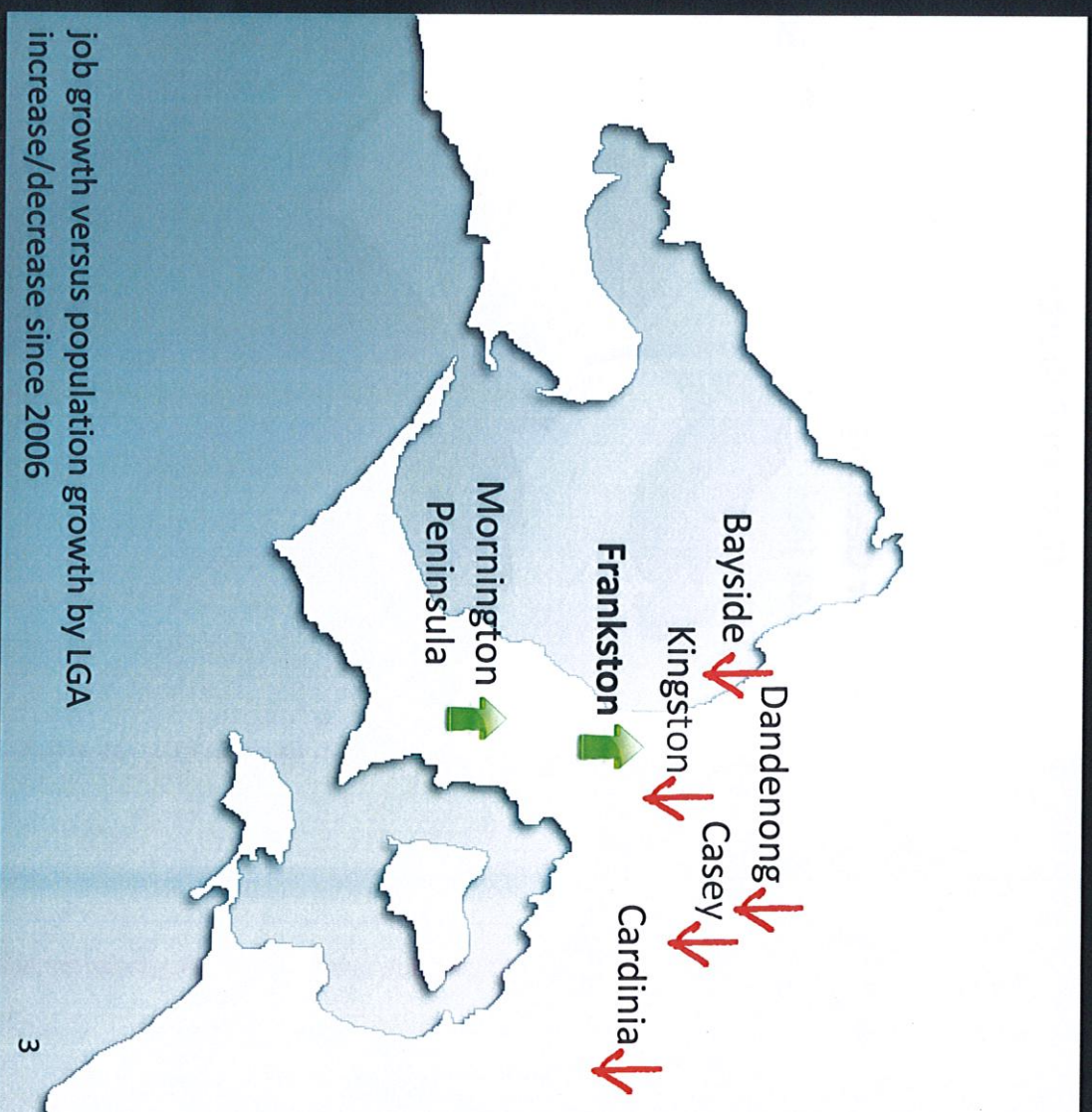
Population increase:

**79,067**

Job increase:

**15,045**

(ABS Census of Population and Housing  
2006, 2013)



# Jobs in automotive and parts manufacturing 2011



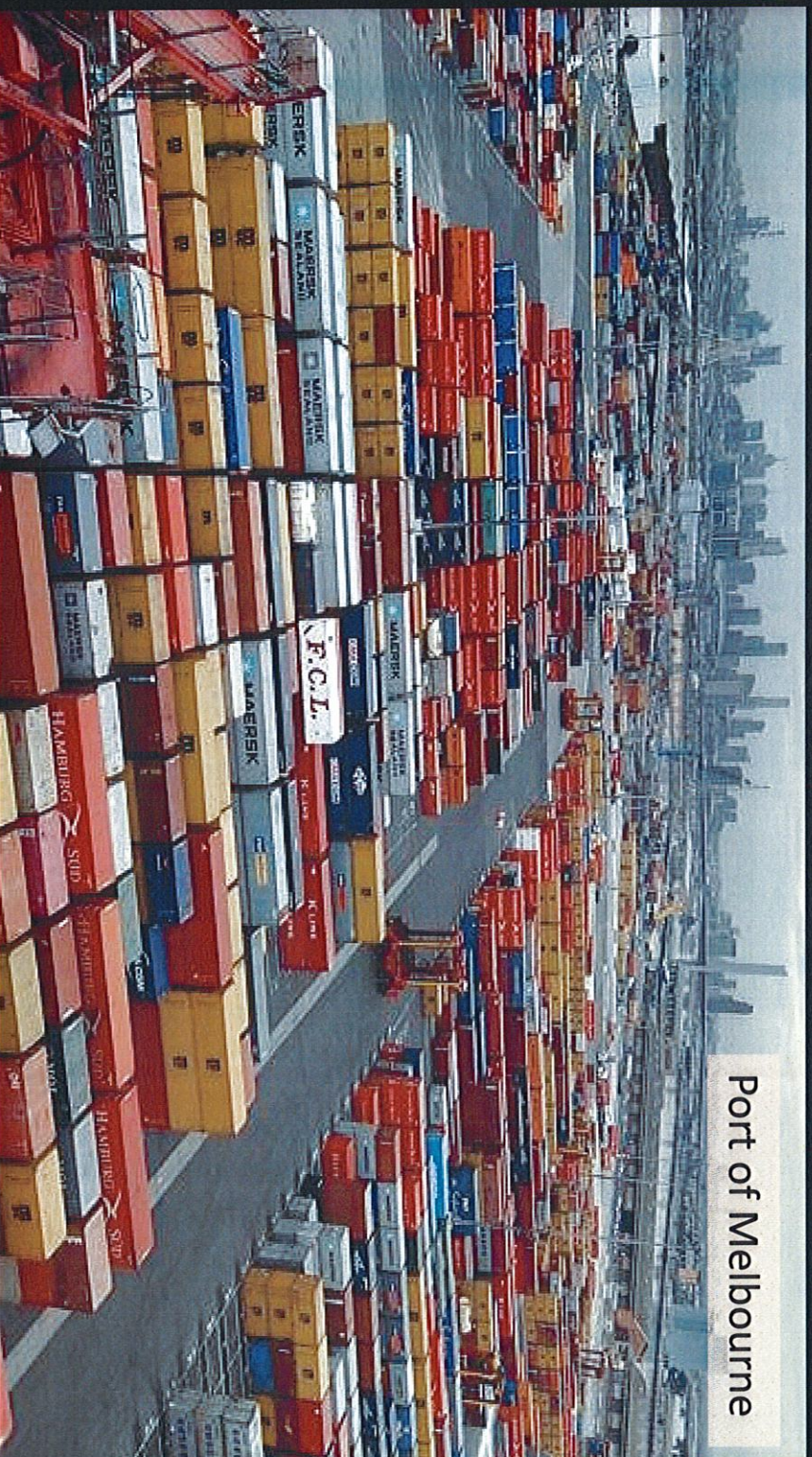
**What would an expanded Port of Hastings deliver for  
Frankston City and the South East Melbourne?**

**15,200 jobs**

**\$1 billion per annum**

(Port of Hastings Economic Impact Analysis 2013 – GHD)

# Port of Melbourne will reach capacity in the next 20 years



Port of Melbourne

**Lack of transparency about  
warranties if POM does  
not achieve 8 million TEU**

**How much?**

**What's the impact on a second container port?**

**What's the impact on Victorian jobs?**

**What's the impact on the Port of Hastings expansion?**

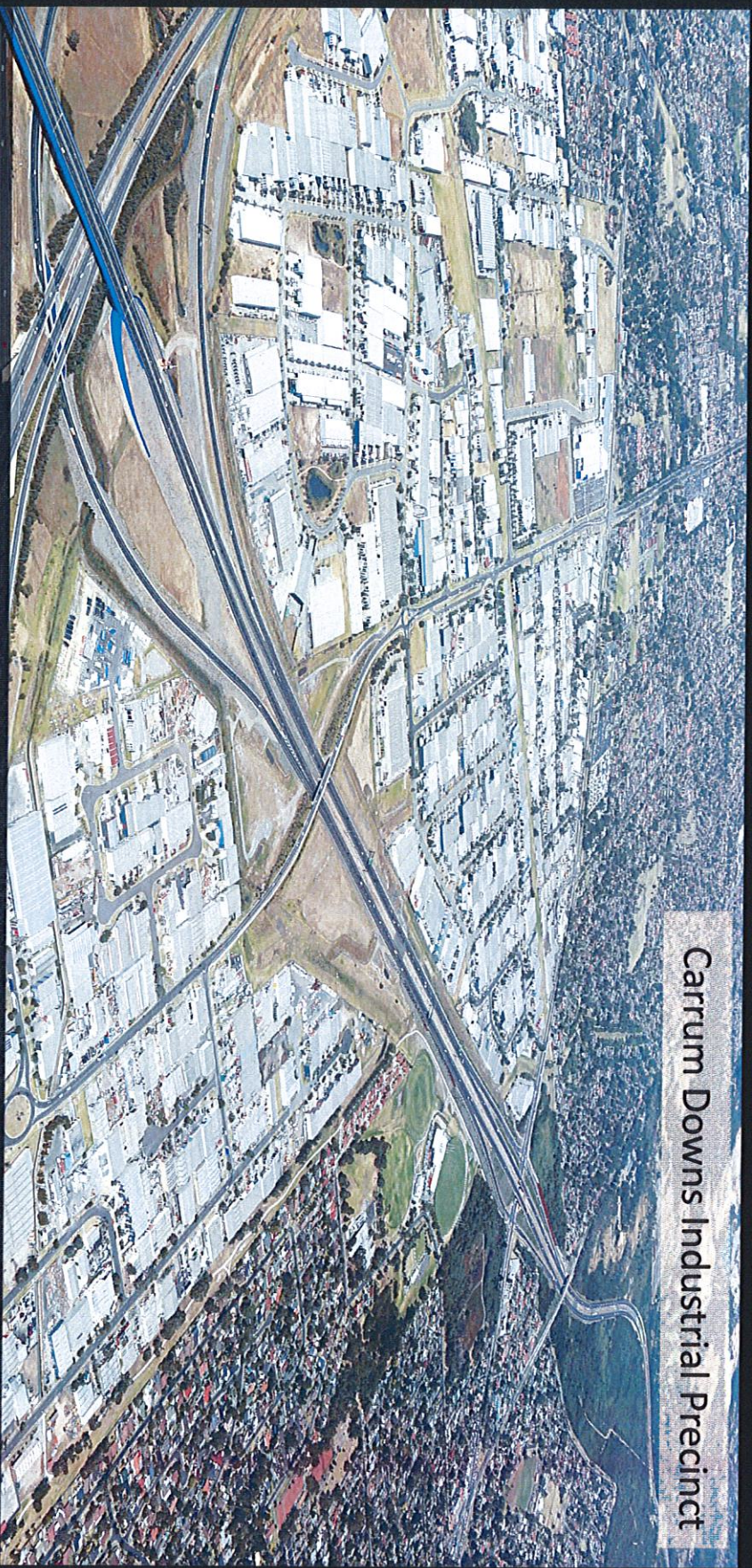
# Why delay or disrupt planning for a second container port?



**Brisbane, Sydney, Perth, Adelaide and Tasmania are poised to attract entire Victorian industries**



**Will Victoria maintain its status as Australia's premier  
logistics and manufacturing state?**



Carrum Downs Industrial Precinct

**HIGH** Over **400,000** jobs state-wide  
**RISK** Over **80,000** jobs in South East Melbourne  
Over **5,000** jobs in Frankston City