



## 2011-12 Public Accounts and Estimates Committee

Hon Mary Wooldridge  
Minister for Community Services

19 May 2011

## Portfolio overview

### Significant new output funding for Human Services - \$902.5 million

New output funding of \$880.2 million over five years for community services

<b>Community Services Portfolio</b>	<b>2010-11 Budget (\$m)</b>	<b>2011-12 Budget (\$m)</b>	<b>Growth %</b>	<b>New funding 2010-11 to 2014-15 (\$m)</b>
Disability Services	1,370.4	1,445.4	5.5	93.0
Child Protection and Family Services	653.1	702.9	7.6	98.2
Youth Services and Youth Justice	114.2	126.4	10.7	26.2
Concessions to Pensioners and Beneficiaries	493.2	639.0	29.6	444.5
Empowering Individuals and Communities	40.9	40.8	0.0	7.2
Funding to support service delivery				211.1

# Child Protection and Family Services

## Delivering better outcomes for child protection

\$44.7 million to deliver major improvements to services

### Election Commitments

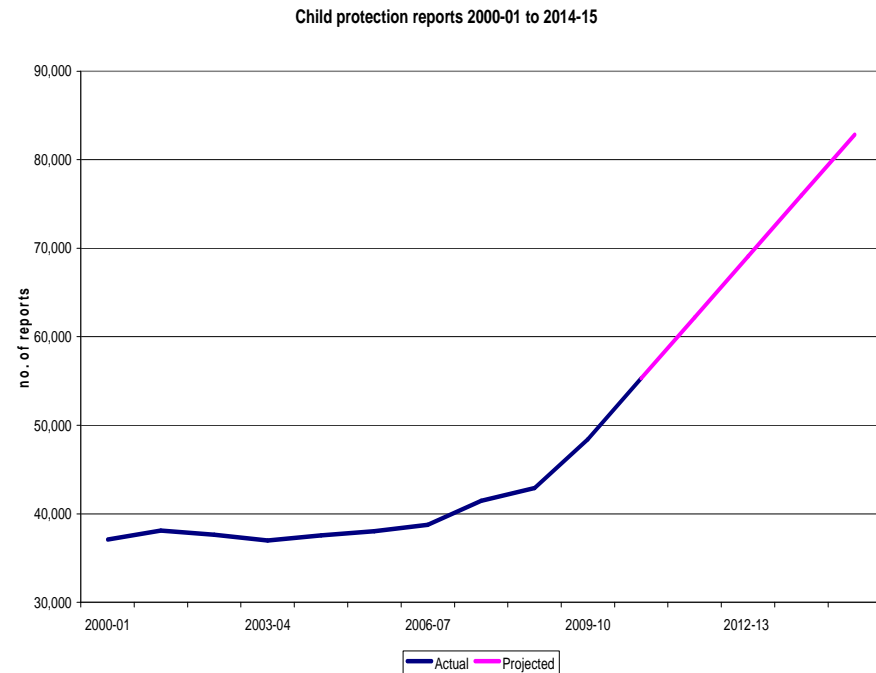
- Establish intensive ante and post-natal services.
- Child care for at-risk kids
- A new independent Children's Commissioner
- Reform case management

### Lapsing Programs

- Strengthen Aboriginal Community Controlled Organisations
- More Early Childhood Development workers

### New investment

- 47 more child protection practitioners



# Child Protection and Family Services

## Delivering better outcomes for out-of-home care

\$53.5 million to support young people in out-of-home care

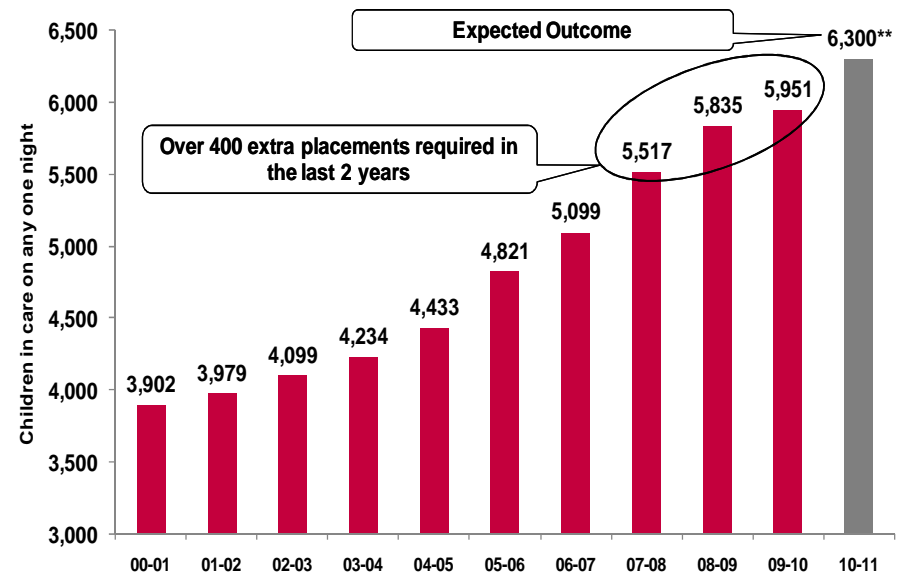
### Election Commitments

- Comprehensive health and education assessments for children in care
- Better support to care leavers
- Better support for foster carers (Foster Carer Association of Victoria)
- Longitudinal study on out-of-home care impacts

### New investment

- Secured over 300 Out-of-Home care placements

### Protecting Victoria's Vulnerable Children



# Child Protection and Family Services

## Improving Youth Justice

\$27.2 million output and asset investment to support prevention and rehabilitation to reduce re-offending

### Election Commitments

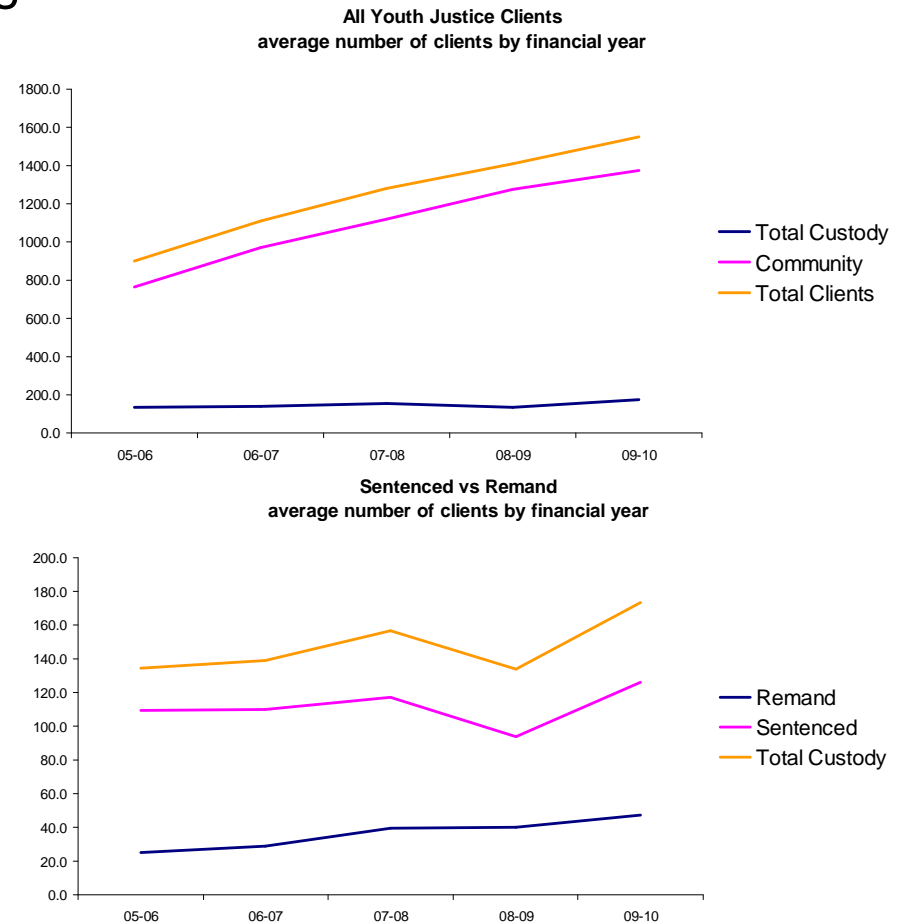
- Improve community safety through diversion and supervision services for young offenders.

### Lapsing Programs

- Alcohol and Drug Strategy – treatment services

### New investment

- Expand the Youth Justice Group Conferencing program
- 23 new community youth justice workers
- Improve training for the youth justice custodial workforce
- Youth Justice design and planning



# Disability Services

Improving access of people with a disability, their families and carers to services

\$92.7 million to support people with a disability

## Election Commitments

- Assist 400 children each year to reduce the cost of aids and equipment
- 50 new innovative accommodation places
- Innovative Respite
- School Holiday Respite
- Largest single-year investment in special and autism school capital works in Victoria in more than a decade\*

## Lapsing Programs

- Aids and equipment – home and vehicle modifications
- Acquired Brain Injury Slow to Recover program
- Video Relay Interpreting Service (Technability)

## New investment

- Provide approximately 700 more students with a disability with teaching, equipment and specialist services\*



# Concessions

## Easing cost of living pressures through Victoria's concession programs

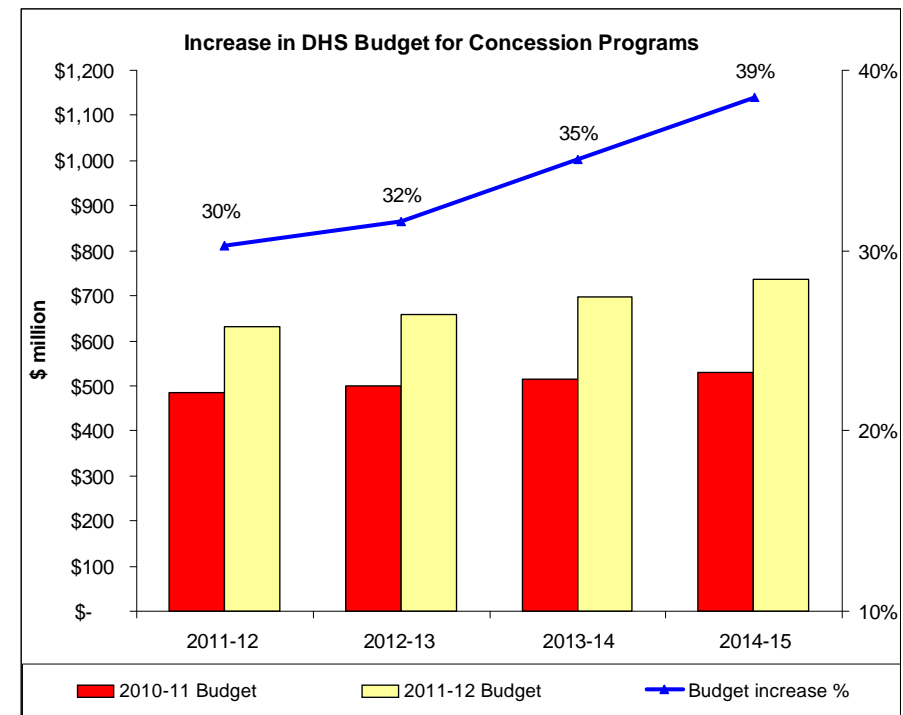
\$444.5 million to ease the cost of living

### Election Commitments

- Annual Electricity Concession

### New investment

- Water and Sewerage concession
- Further investment in electricity concessions



## Empowering individuals and communities

### Investing in individuals and the community

\$7.5 million to strengthen capacity

#### **Election commitments**

- Small scale election commitments to support community and charitable projects

#### **Lapsing programs**

- Construct up to 30 new Men's Sheds and refurbish up to 46 others
- Improve Neighbourhood House infrastructure, accessibility and amenities.
- Building women's economic participation





# Improving the sustainability of human services

## Meeting service costs

\$211.1 million to support service delivery

### **Election commitments**

- Social and community services pay equity

### **New investment**

- Community service organisations insurance boost
- Additional public holidays



## Emergency Services

### 2011 flood recovery services

\$11.6 million to assist with regional recovery\*

- Regional recovery staffing
- Psychosocial support including increased counselling resources, community information sessions and case work support
- Interim housing support including providing access to rental assistance, access to public housing or access to a caravan or moveable unit on peoples' land.



\* Investment across Departments of Human Services and Health



## 2011-12 Public Accounts and Estimates Committee

Hon Mary Wooldridge  
Minister for Community Services

19 May 2011