

PAEC 2013

Public Transport Presentation

Wednesday 15 May

Terry Mulder MP
Minister for Public Transport
Minister for Roads

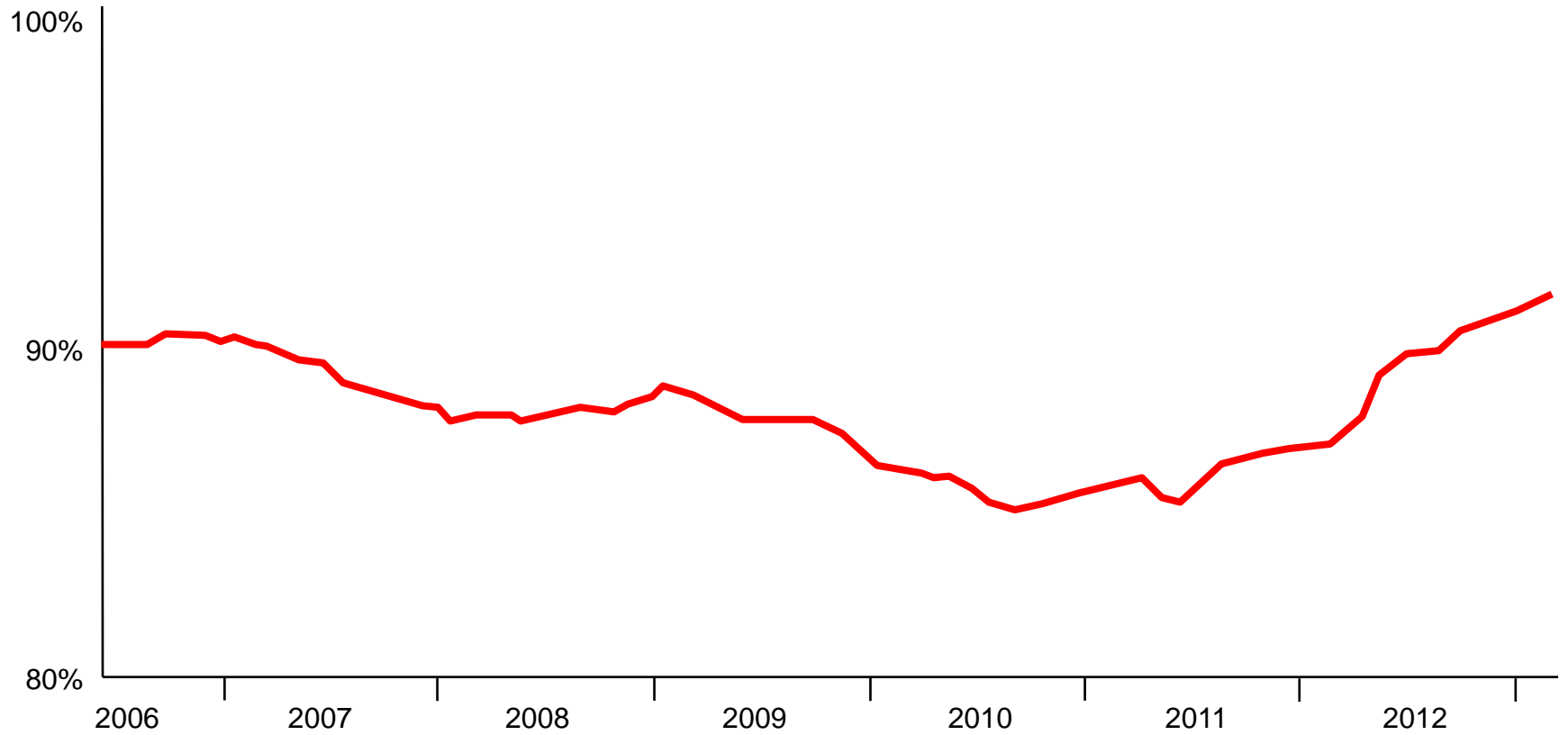


DEPARTMENT OF TRANSPORT,
PLANNING AND LOCAL INFRASTRUCTURE



Metropolitan train punctuality

Percentage of on-time (to 4:59) at destination

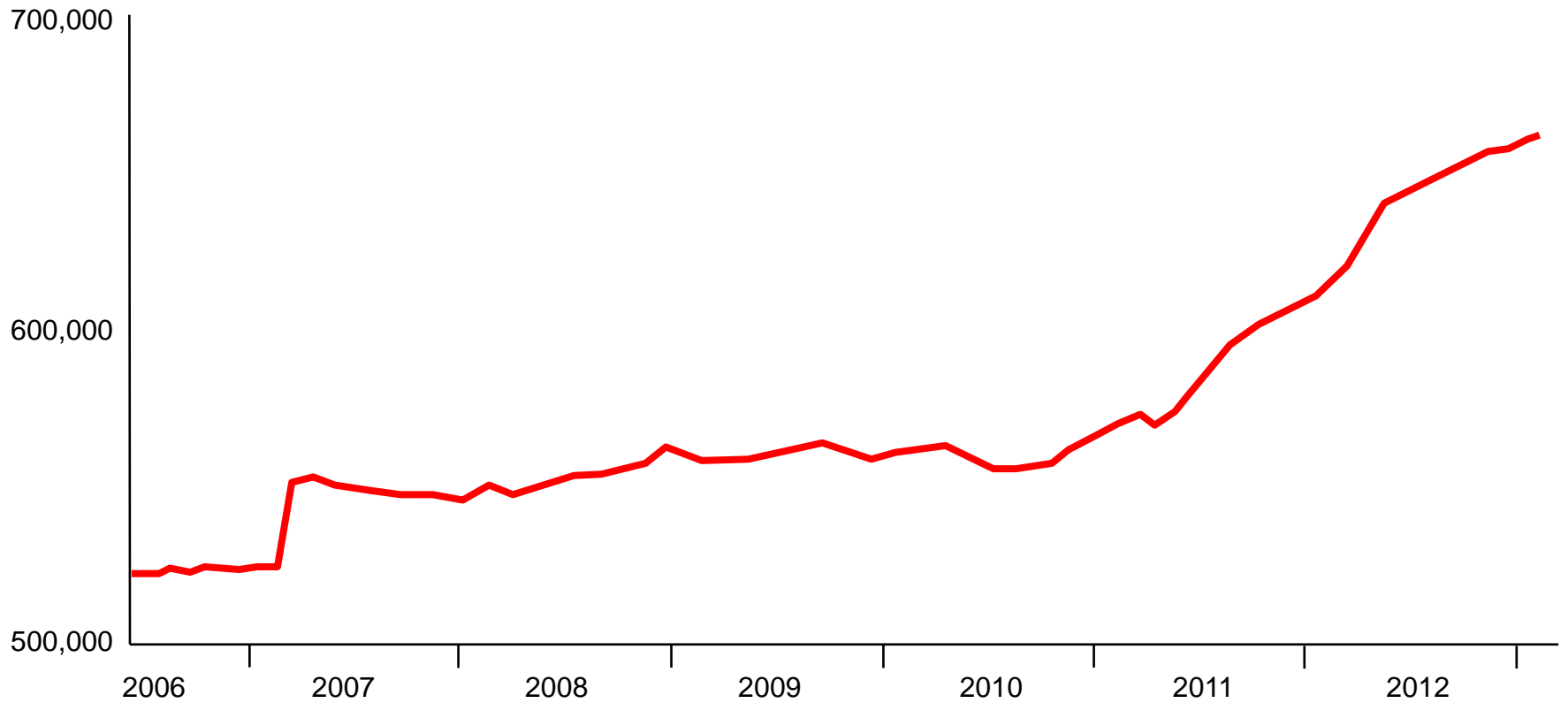


DEPARTMENT OF TRANSPORT,
PLANNING AND LOCAL INFRASTRUCTURE



Metropolitan train punctuality

Number of services on-time (to 4:59) at destination

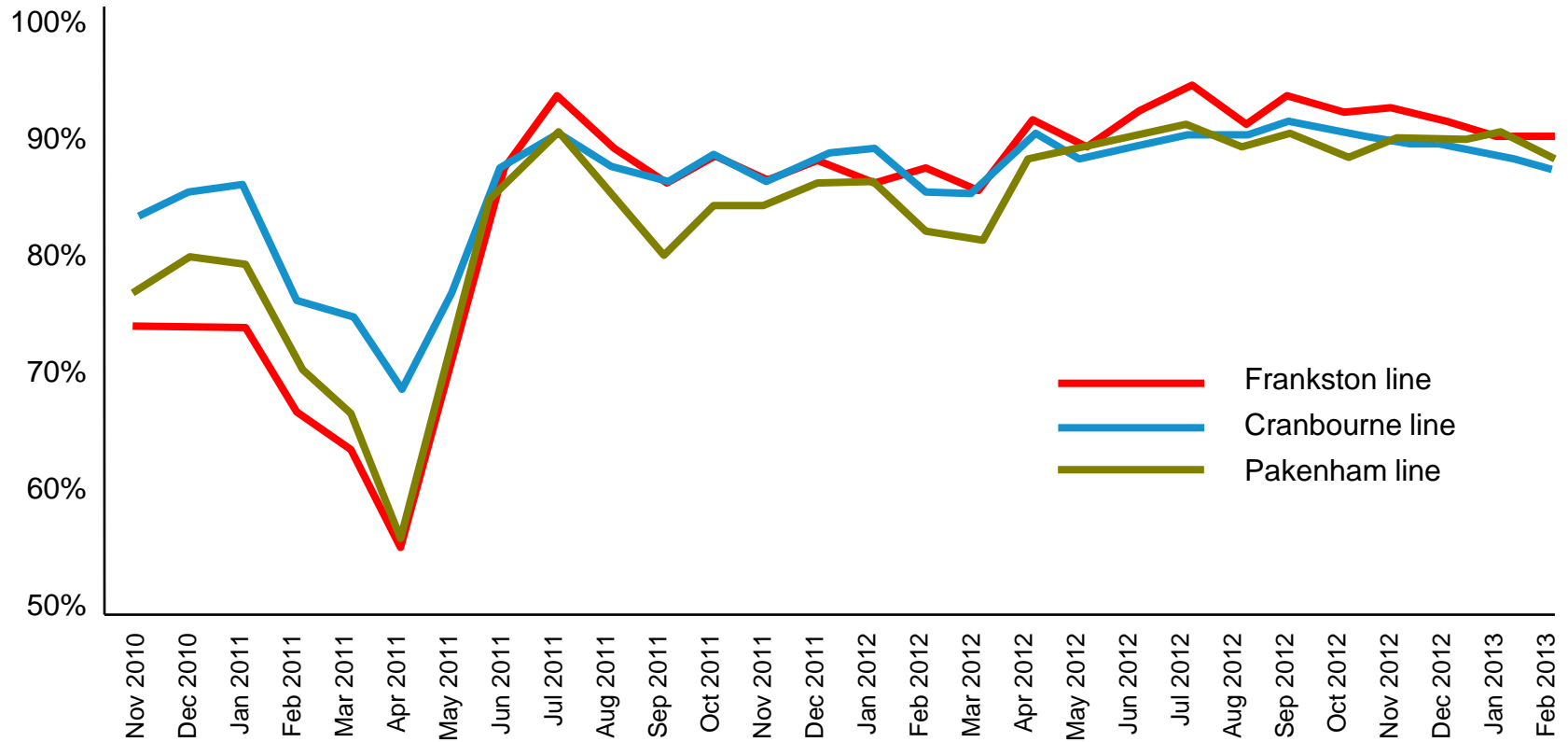


DEPARTMENT OF TRANSPORT,
PLANNING AND LOCAL INFRASTRUCTURE



Lifting underperforming lines

Monthly on-time running (to 4:59) at destination on Frankston, Cranbourne and Pakenham lines

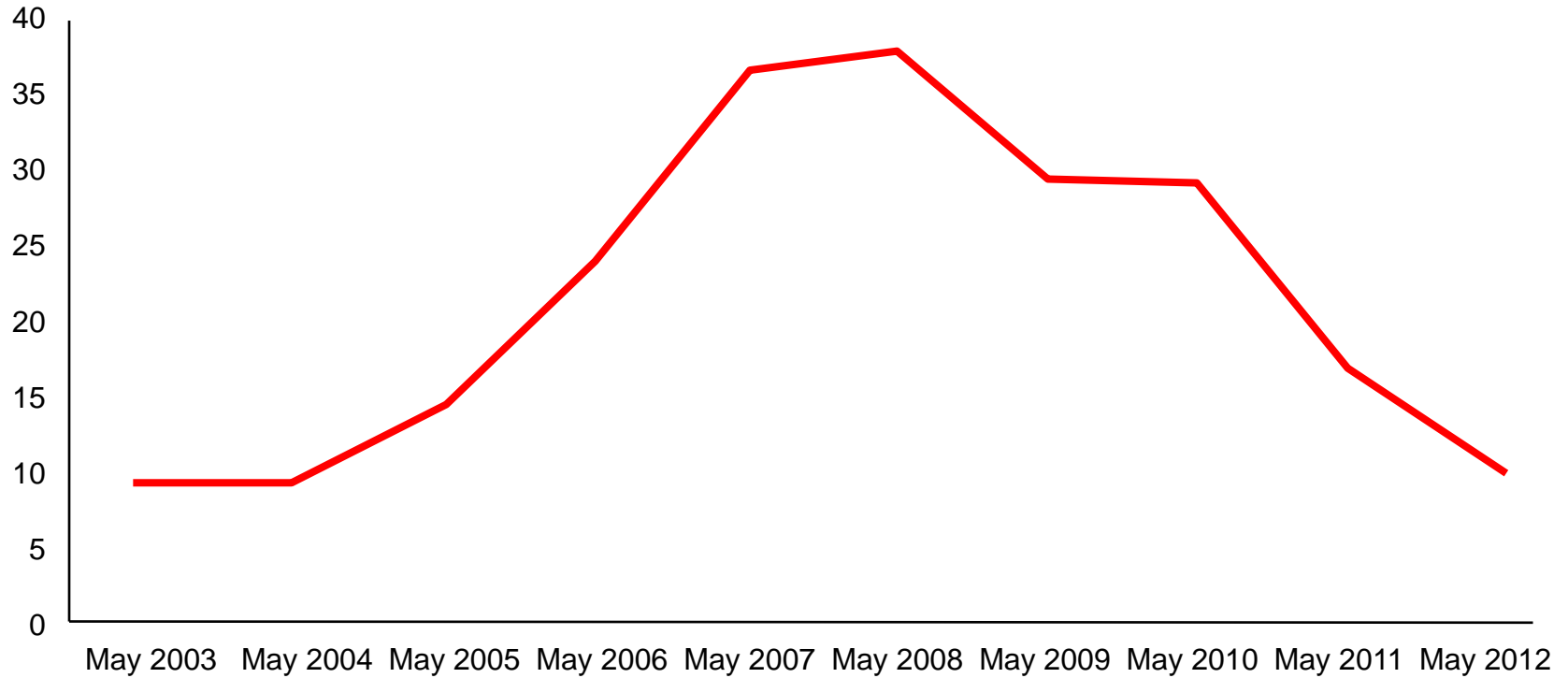


DEPARTMENT OF TRANSPORT,
PLANNING AND LOCAL INFRASTRUCTURE



Load breaches are down

Number of load breaches

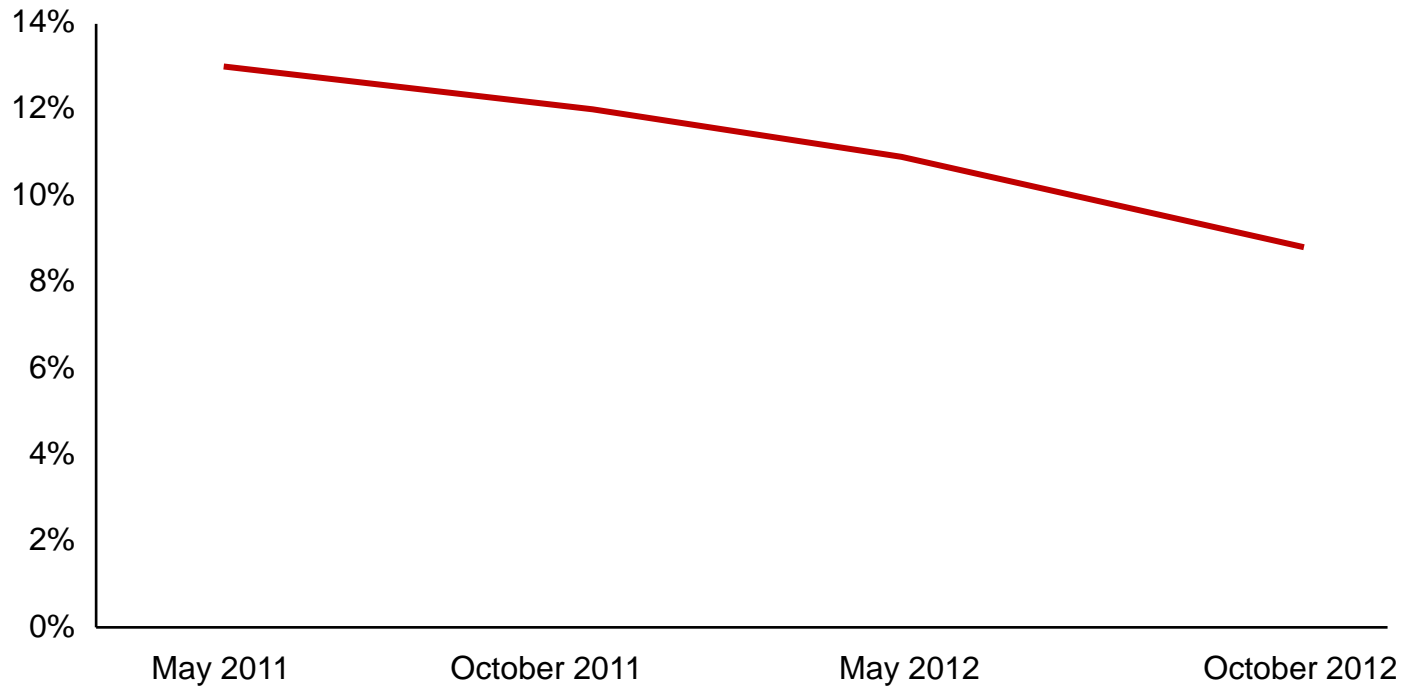


DEPARTMENT OF TRANSPORT,
PLANNING AND LOCAL INFRASTRUCTURE



Fare evasion is on the decrease on the metropolitan network

Fare evasion rate



DEPARTMENT OF TRANSPORT,
PLANNING AND LOCAL INFRASTRUCTURE



Public Transport Maintenance Spending 2012-13



Allocated \$372 million to rail maintenance (state-wide)
Allocated \$61 million to tram maintenance



Replaced 14km of track, 106,000 sleepers, and 28km of overhead wiring



Renewed 10 level crossings, restored three stations, replaced or restored 32 bridges



Renewed 10 kilometres of track, 15 track junctions and 20 kilometres of trolley wire; upgraded 120 overhead poles and replaced four automatic points.



PUBLIC TRANSPORT VICTORIA

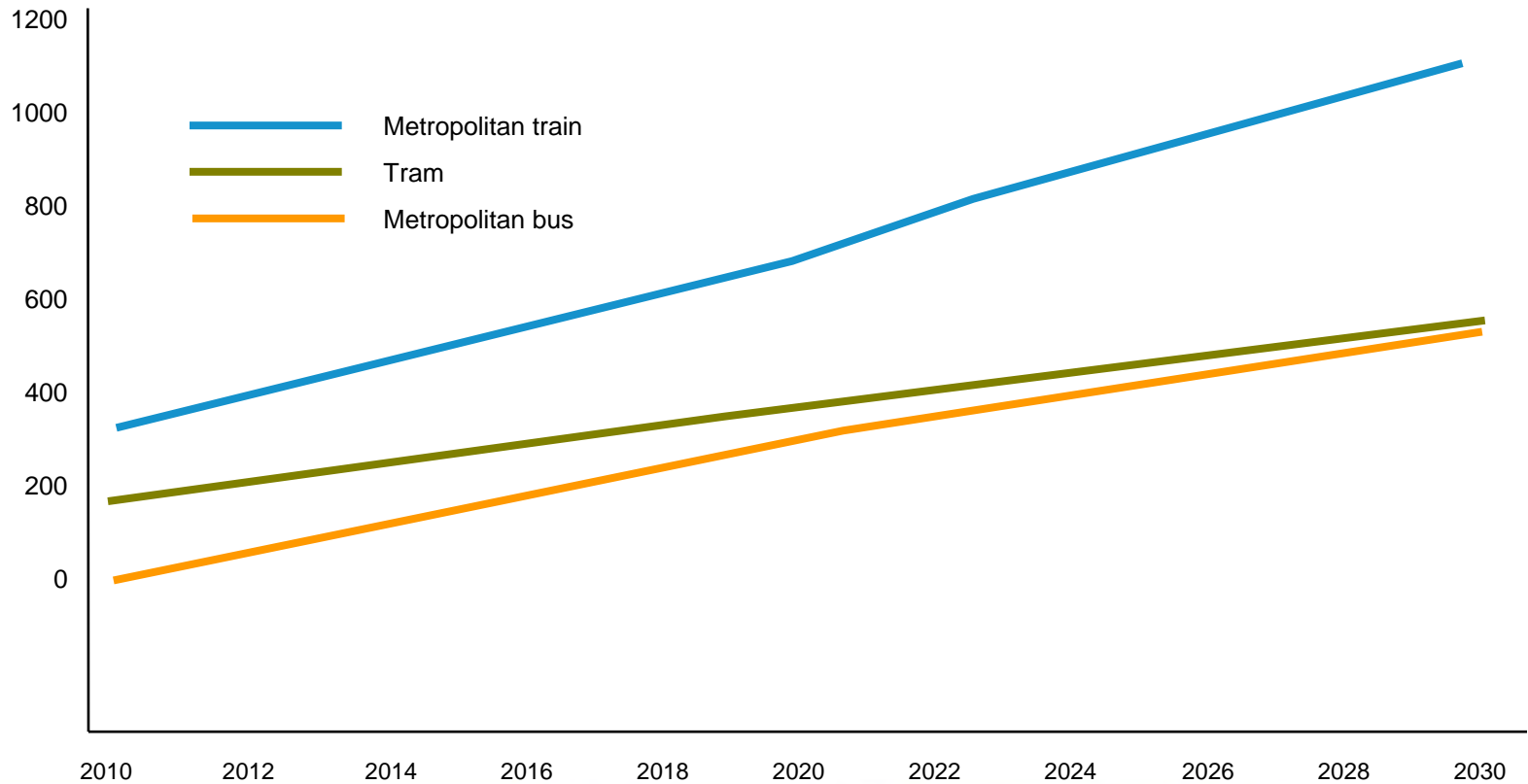
PT >

DEPARTMENT OF TRANSPORT,
PLANNING AND LOCAL INFRASTRUCTURE



Metropolitan patronage

Annual boardings
(millions)

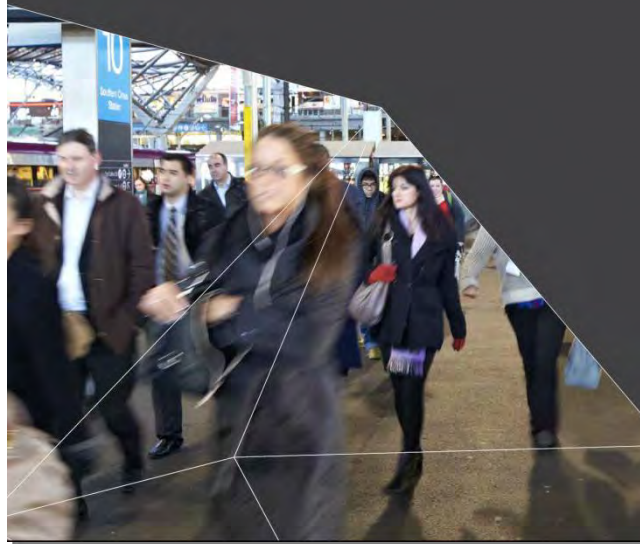


DEPARTMENT OF TRANSPORT,
PLANNING AND LOCAL INFRASTRUCTURE



Network Development Plan – Metropolitan Rail

December 2012



DEPARTMENT OF TRANSPORT,
PLANNING AND LOCAL INFRASTRUCTURE



New Trains for Melbourne Commuters

\$178 million



DEPARTMENT OF TRANSPORT,
PLANNING AND LOCAL INFRASTRUCTURE



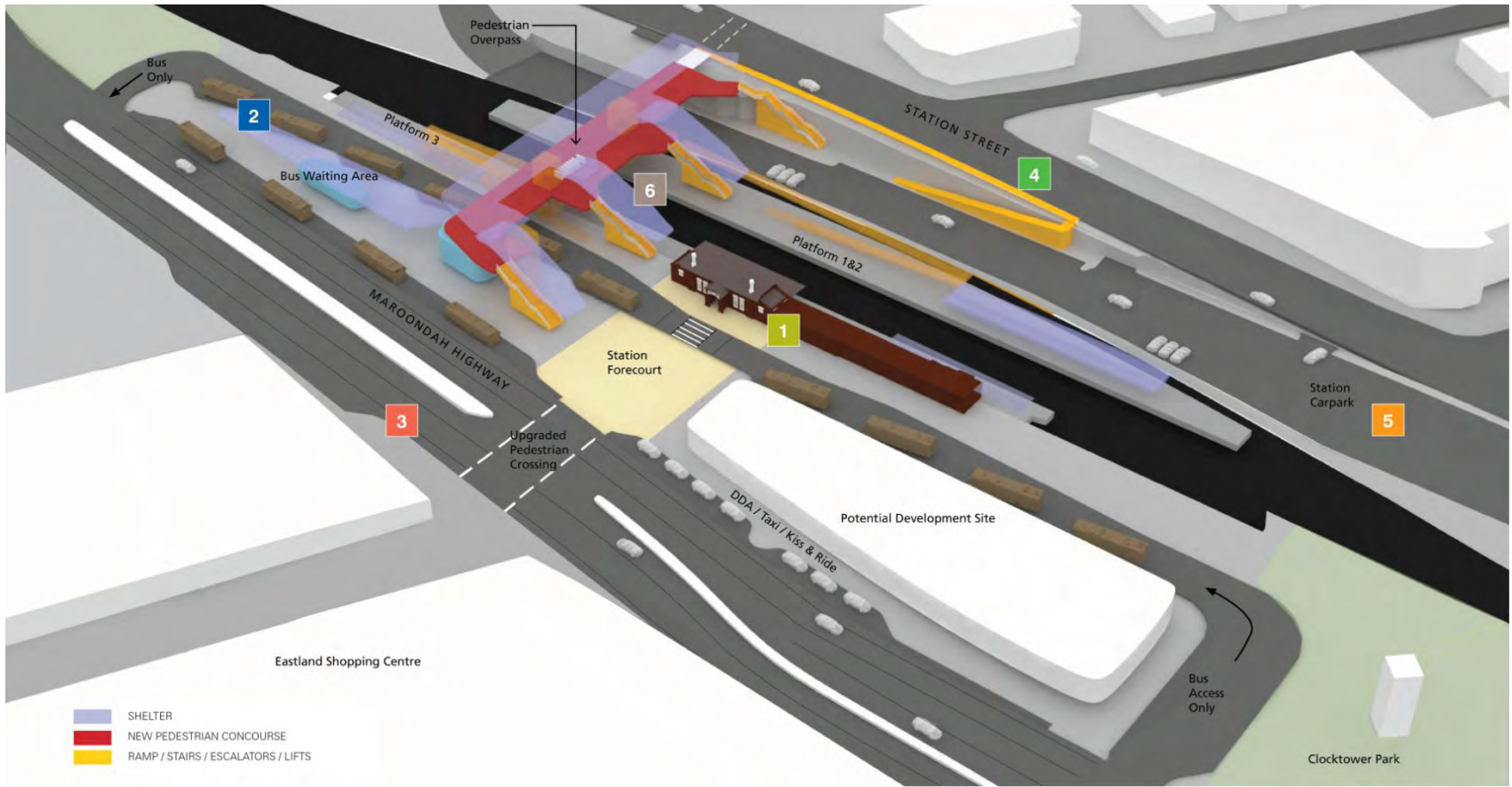
Melbourne Metro

- Existing network
- Existing station
- Proposed underground rail tunnel
- Proposed underground station



Ringwood Station and Interchange

\$66 million



DEPARTMENT OF TRANSPORT,
PLANNING AND LOCAL INFRASTRUCTURE



Metro Level Crossing Blitz Program

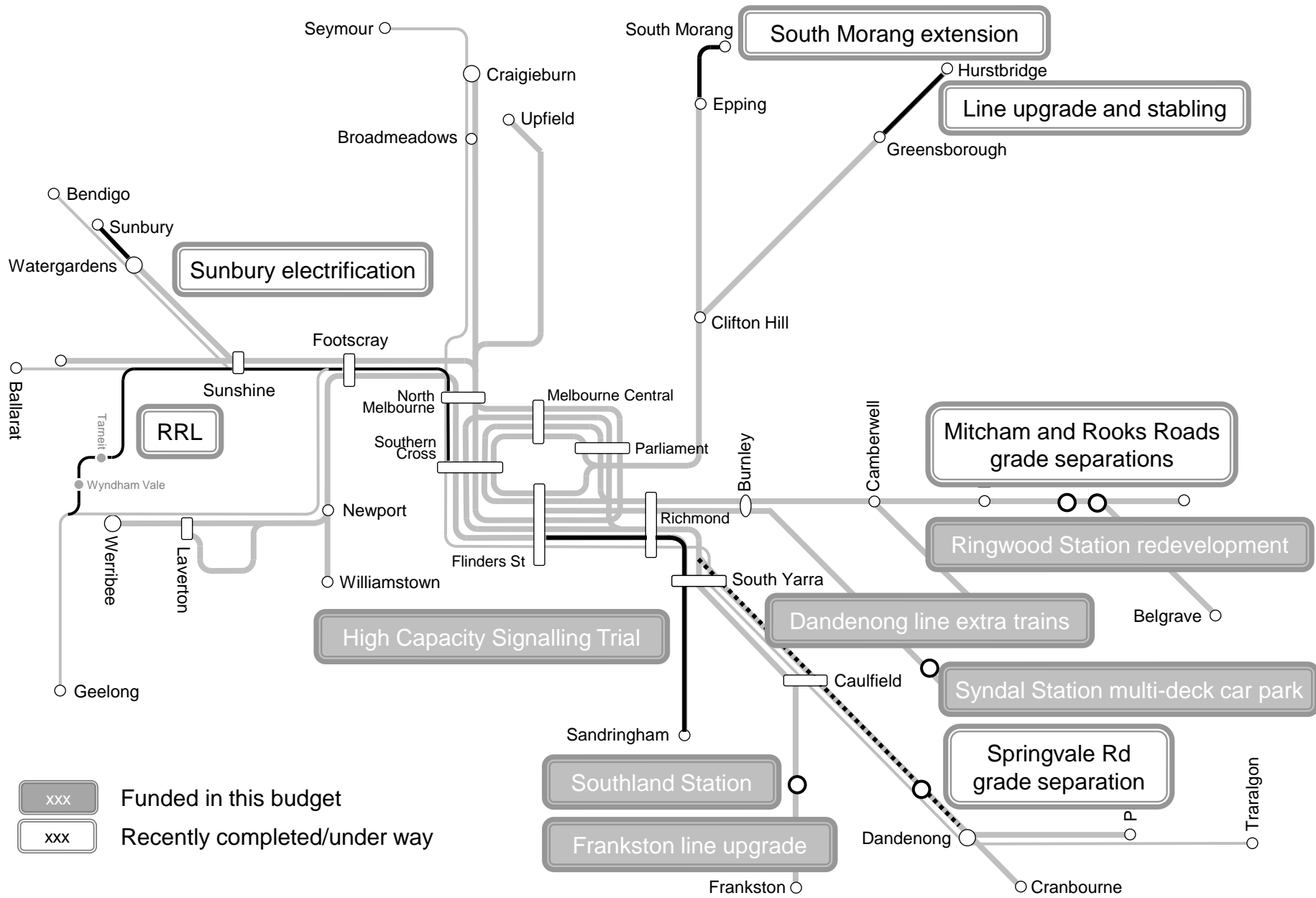
\$52.3 million over two years



DEPARTMENT OF TRANSPORT,
PLANNING AND LOCAL INFRASTRUCTURE



Metropolitan rail initiatives



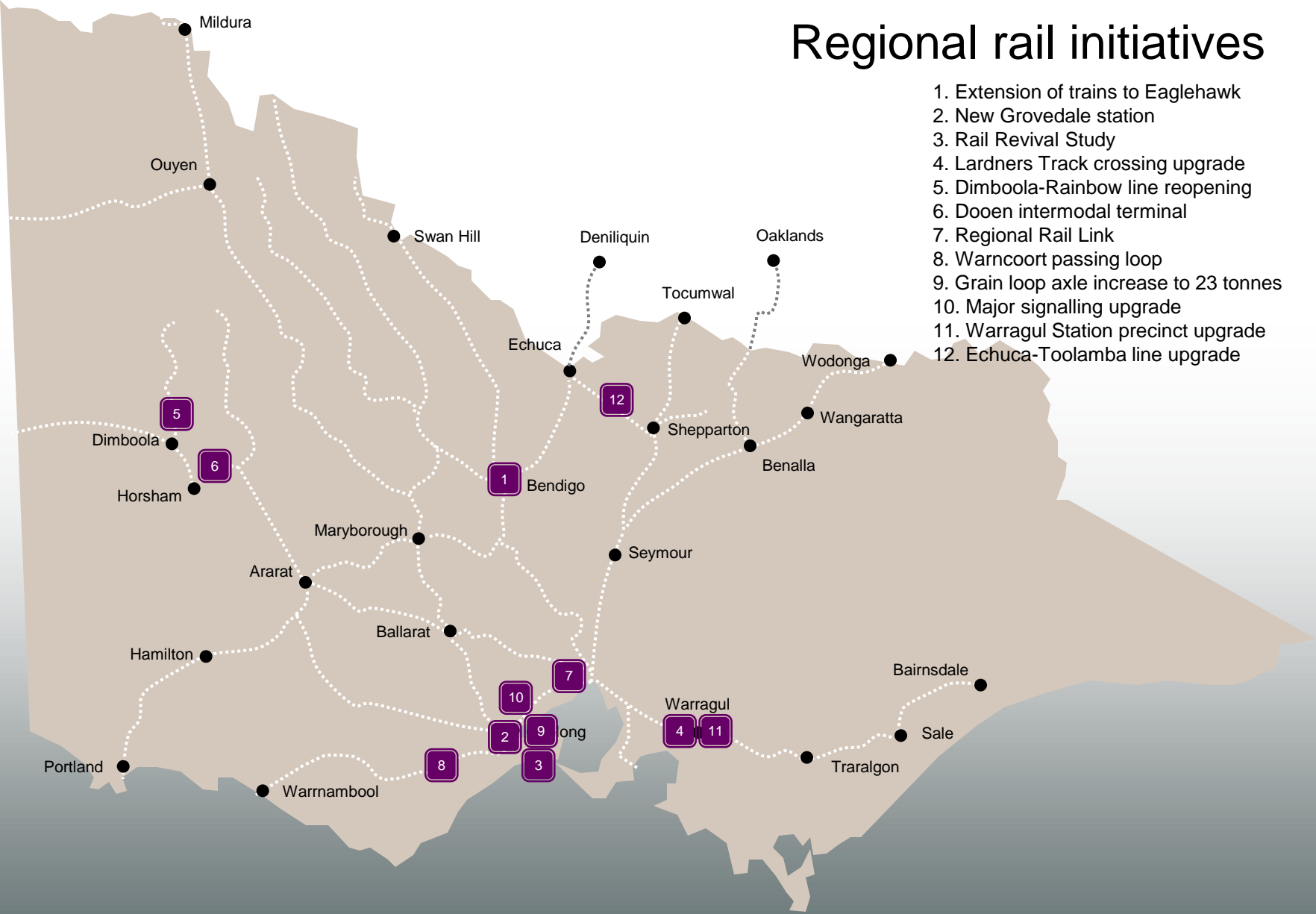
Grovedale Station
\$16.5 million over two years

Rail Revival
South Geelong to Drysdale
Grovedale to Torquay

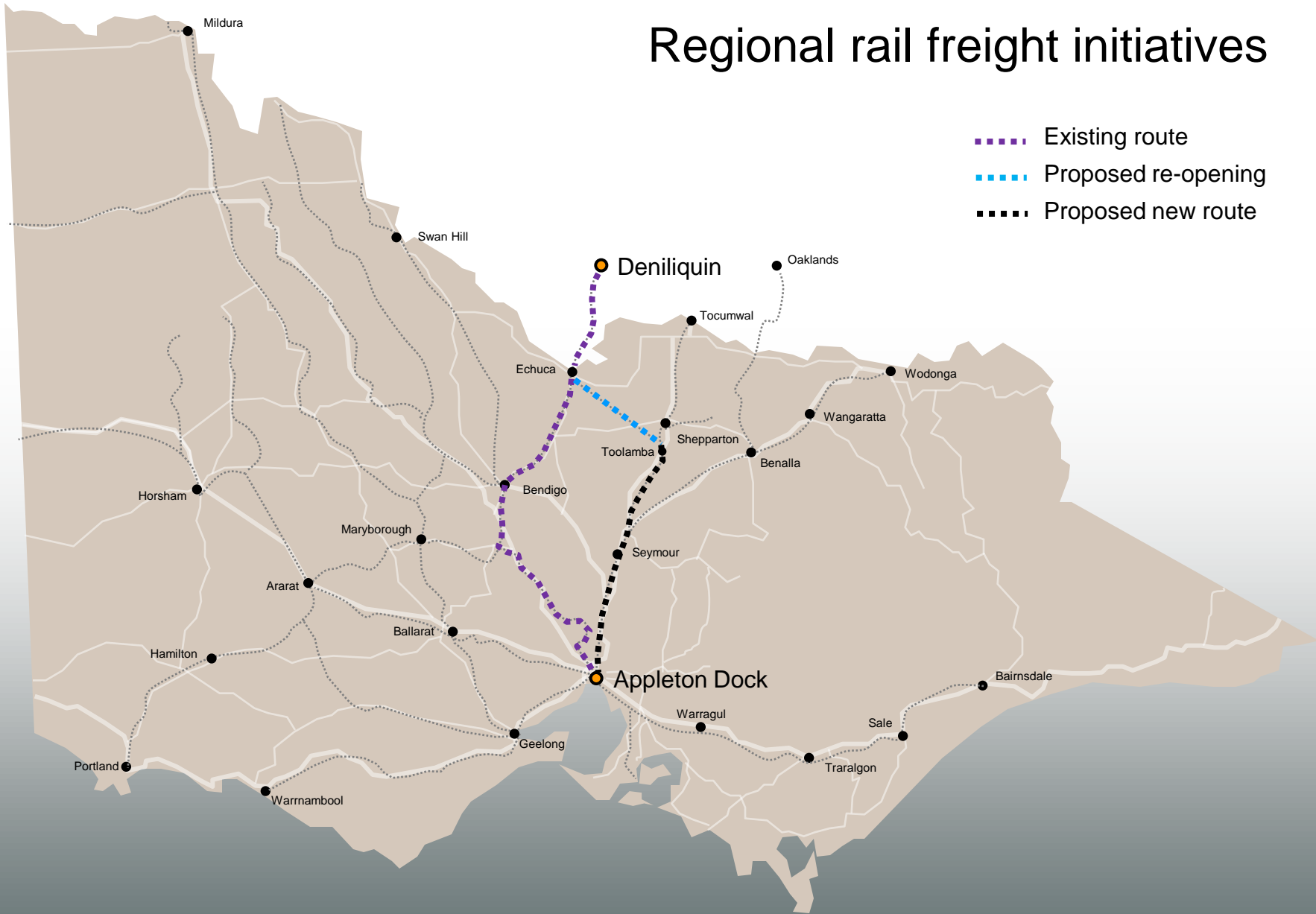


Regional rail initiatives

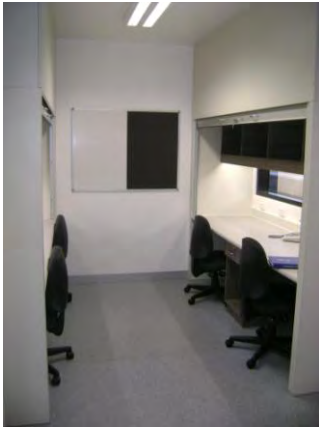
- 1. Extension of trains to Eaglehawk
- 2. New Grovedale station
- 3. Rail Revival Study
- 4. Lardners Track crossing upgrade
- 5. Dimboola-Rainbow line reopening
- 6. Dooen intermodal terminal
- 7. Regional Rail Link
- 8. Warrcoort passing loop
- 9. Grain loop axle increase to 23 tonnes
- 10. Major signalling upgrade
- 11. Warragul Station precinct upgrade
- 12. Echuca-Toolamba line upgrade



Regional rail freight initiatives



Protective Services Officers Railway Infrastructure



- CCTV
- Hand-over room
- Lockers
- Kitchen/toilet
- Workstation

DEPARTMENT OF TRANSPORT,
PLANNING AND LOCAL INFRASTRUCTURE



PAEC Budget Estimates Hearings 2013

Public Transport Presentation

Wednesday 15 May

Terry Mulder MP
Minister for Public Transport
Minister for Roads



DEPARTMENT OF TRANSPORT,
PLANNING AND LOCAL INFRASTRUCTURE